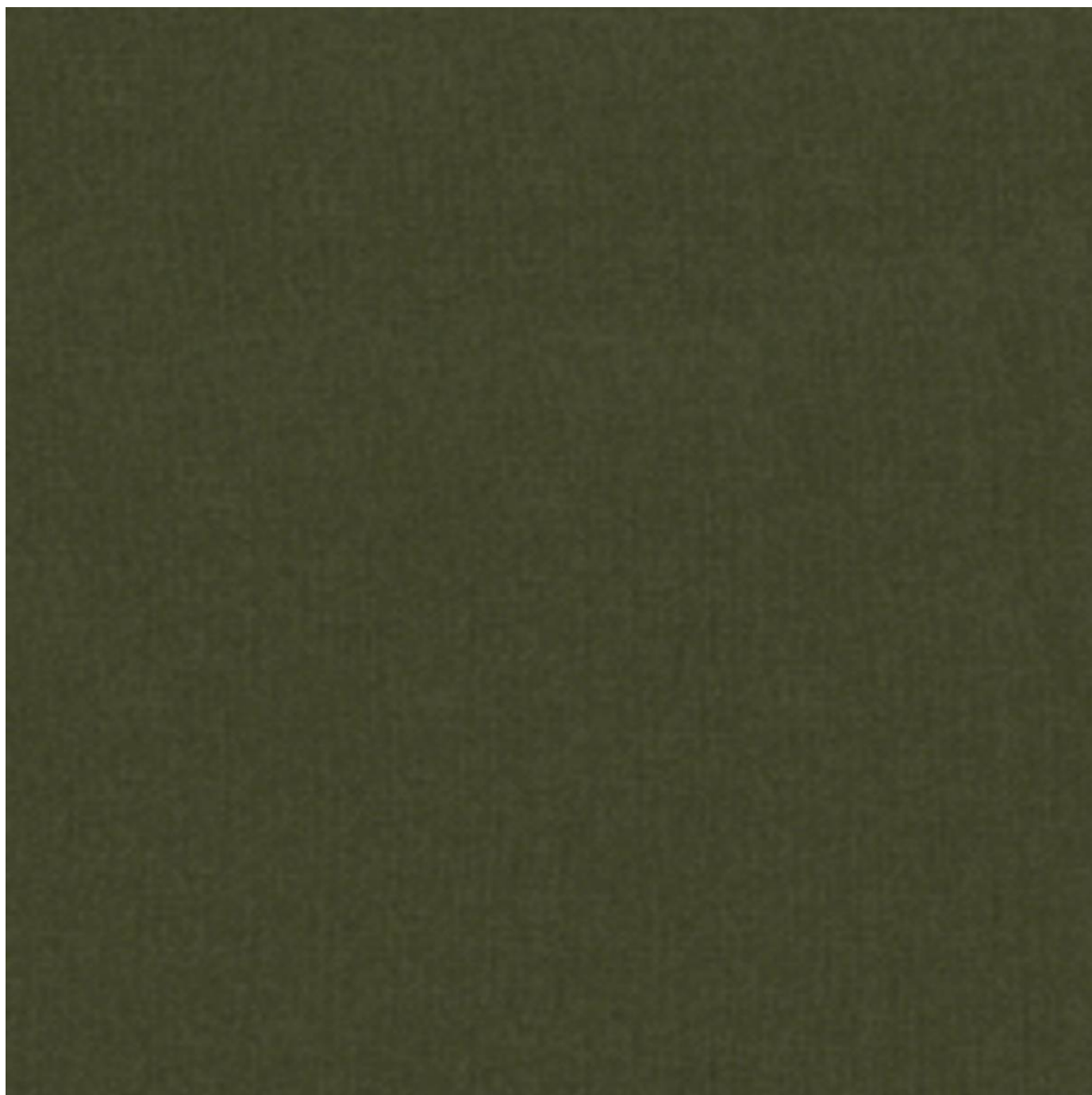


# ENDUREPEL PACE FUNDAMENTALS II

**Fabrics** » Woven Fabrics

---



Brand: **Endurepel**

Applications: **Upholstery**

# ENDUREPEL PACE FUNDAMENTALS II

Fabrics » Woven Fabrics

Endurepel Pace is a 137cm wide woven upholstery that's available in 3 dark colours. Easy to clean, water repellent and anti-bacterial

✓ **Moisture Repellant**

✓ **Anti-Bacterial**

✓ **Anti-Microbial**

Description	The Fundamentals II range features 85 coordinating textures and semi-plains that come standard with Endurepel Shield performance finish to repel liquid and make the upholsteries anti-microbial and anti-bacterial. Add Endurepel Barrier for a complete moisture barrier.
-------------	---

Composition	Endurepel Shield - 100% polyester Add Endurepel Barrier for a complete moisture barrier
-------------	---

Pattern Repeat Size	N/A
---------------------	-----

Roll Size	137cm x Approx 45m - 55m - Available by the lineal metre
-----------	--

Abrasion	200,000+ Double Rubs (Wyzenbeek)
----------	----------------------------------

Fire Rating	Tested in accordance with AS1530.3 Spread of Flame Index - 0 Smoke Developed Index - 5
-------------	--

Lead Time	<ul style="list-style-type: none"><li>• 3-weeks (approx) from Wednesday subject to stock availability.</li><li>• Additional 1-week for Western Australia.</li><li>• Additional 2 weeks for Endurepel Barrier.</li><li>• Express delivery is available subject to a surcharge. Contact Baresque for details and pricing.</li></ul>
-----------	---

# ENDUREPEL PACE FUNDAMENTALS II

Fabrics » Woven Fabrics

---

## Care Instructions

- Always use a clean, white, soft cloth.
- Clean in situ using a damp cloth and mild detergent. Sponge down afterwards with a clean, damp cloth.
- Using a cloth to pat dry will help eliminate watermarks.
- Ensure the pile is brushed back to its natural direction.
- Upholstered furniture should be regularly vacuumed or brushed with a soft nylon brush to remove grit or dust, which may damage the pile.
- Never use stiff bristles or wire brushes, as they may damage the fabric.
- Always test in an inconspicuous area first. If care instructions don't deliver the expected results, cease cleaning method immediately and contact Baresque for assistance.

---

## Warranty

2-year warranty. Visit [baresque.com.au/warranty](https://baresque.com.au/warranty) for complete details.

---

## Additional Comments

Add Endurepel Barrier for full Moisture Barrier

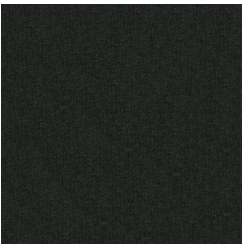
---

# ENDUREPEL PACE FUNDAMENTALS II

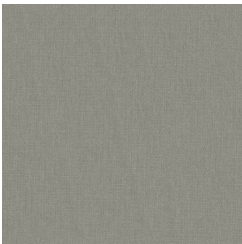
Fabrics » Woven Fabrics

---

## Colour & Finish Options



908 CHARCOAL



94 PLATINUM