

# ENDUREPEL MIA FUNDAMENTALS II

Fabrics » Woven Fabrics

---



Brand: **Endurepel**

Applications: **Upholstery**

1300 306 399

[info@baresque.com.au](mailto:info@baresque.com.au)

[baresque.com.au](http://baresque.com.au)

1 of 4

# ENDUREPEL MIA FUNDAMENTALS II

Fabrics » Woven Fabrics

Endurepel Mia is a 137cm wide woven upholstery that's available in 6 colors. Easy to clean, anti-bacterial and water repellent. Suitable for indoor

✓ **Moisture Repellant**

✓ **Anti-Bacterial**

✓ **Anti-Microbial**

Description	The Fundamentals II range features 85 coordinating textures and semi-plains that come standard with Endurepel Shield performance finish to repel liquid and make the upholsteries anti-microbial and anti-bacterial. Add Endurepel Barrier for a complete moisture barrier.
-------------	---

Composition	Endurepel Shield - 100% polyester Add Endurepel Barrier for a complete moisture barrier
-------------	---

Pattern Repeat Size	N/A
---------------------	-----

Roll Size	137cm x Approx 45m - 55m - Available by the lineal metre
-----------	--

Abrasion	60,000+ Double Rubs (Wyzenbeek)
----------	---------------------------------

Fire Rating	Tested in accordance with AS1530.3 Spread of Flame Index - 0 Smoke Developed Index - 5
-------------	--

Lead Time	<ul style="list-style-type: none"><li>• 3-weeks (approx) from Wednesday subject to stock availability.</li><li>• Additional 1-week for Western Australia.</li><li>• Additional 2 weeks for Endurepel Barrier.</li><li>• Express delivery is available subject to a surcharge. Contact Baresque for details and pricing.</li></ul>
-----------	---

# ENDUREPEL MIA FUNDAMENTALS II

Fabrics » Woven Fabrics

---

Care Instructions	<p>Always use a clean, white, soft cloth.</p> <p>Clean in situ using a damp cloth and mild detergent. Sponge down afterwards with a clean, damp cloth.</p> <p>Using a cloth to pat dry will help eliminate watermarks.</p> <p>Ensure the pile is brushed back to its natural direction.</p> <p>Upholstered furniture should be regularly vacuumed or brushed with a soft nylon brush to remove grit or dust, which may damage the pile.</p> <p>Never use stiff bristles or wire brushes, as they may damage the fabric.</p> <p>Always test in an inconspicuous area first. If care instructions don't deliver the expected results, cease cleaning method immediately and contact Baresque for assistance.</p>
-------------------	--

---

Warranty	2-year warranty. Visit <a href="https://baresque.com.au/warranty">baresque.com.au/warranty</a> for complete details.
----------	--

---

Additional Comments	Add Endurepel Barrier for full Moisture Barrier
---------------------	---

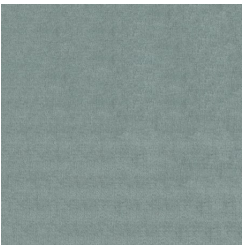
---



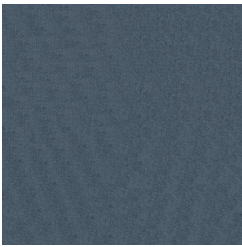
# ENDUREPEL MIA FUNDAMENTALS II

Fabrics » Woven Fabrics

## Colour & Finish Options



25 MIST



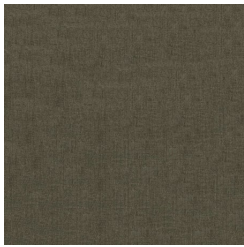
305 LAPIS



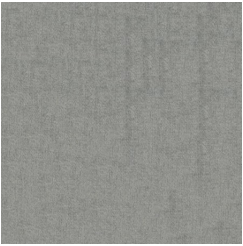
308 MIDNIGHT



601 OYSTER



81 TAUPE



94 PLATINUM