

# ENDUREPEL INTRIGUE FUNDAMENTALS II

Fabrics » Woven Fabrics

---



Brand: **Endurepel**

Applications: **Upholstery**

# ENDUREPEL INTRIGUE FUNDAMENTALS II

Fabrics » Woven Fabrics

Endurepel Intrigue is a 137cm wide woven upholstery that's available in 7 colours. Easy to clean, liquid repellent and anti-bacterial

✓ **Moisture Repellant**

✓ **Anti-Bacterial**

✓ **Anti-Microbial**

Description	The Fundamentals II range features 85 coordinating textures and semi-plains that come standard with Endurepel Shield performance finish to repel liquid and make the upholsteries anti-microbial and anti-bacterial. Add Endurepel Barrier for a complete moisture barrier.
-------------	---

Composition	Endurepel Shield - 92% polyester / 8% nylon Add Endurepel Barrier for a complete moisture barrier
-------------	---

Pattern Repeat Size	N/A
---------------------	-----

Roll Size	137cm x Approx 45m - 55m - Available by the lineal metre
-----------	--

Abrasion	150,000+ Double Rubs (Wyzenbeek)
----------	----------------------------------

Fire Rating	This product can be treated with a fire retardant that will ensure it meets Australian Standard 1530.3. Contact Baresque for details.
-------------	---

Lead Time	<ul style="list-style-type: none"><li>• 3-weeks (approx) from Wednesday subject to stock availability.</li><li>• Additional 1-week for Western Australia.</li><li>• Additional 2 weeks for Endurepel Barrier.</li><li>• Express delivery is available subject to a surcharge. Contact Baresque for details and pricing.</li></ul>
-----------	---

# ENDUREPEL INTRIGUE FUNDAMENTALS II

Fabrics » Woven Fabrics

---

## Care Instructions

Always use a clean, white, soft cloth.

Clean in situ using a damp cloth and mild detergent. Sponge down afterwards with a clean, damp cloth.

Using a cloth to pat dry will help eliminate watermarks.

Ensure the pile is brushed back to its natural direction.

Upholstered furniture should be regularly vacuumed or brushed with a soft nylon brush to remove grit or dust, which may damage the pile.

Never use stiff bristles or wire brushes, as they may damage the fabric.

Always test in an inconspicuous area first. If care instructions don't deliver the expected results, cease cleaning method immediately and contact Baresque for assistance.

---

## Warranty

2-year warranty. Visit [baresque.com.au/warranty](https://baresque.com.au/warranty) for complete details.

---

## Additional Comments

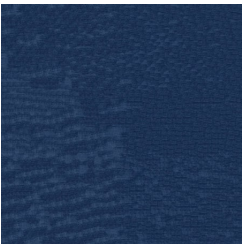
Add Endurepel Barrier for full Moisture Barrier

---

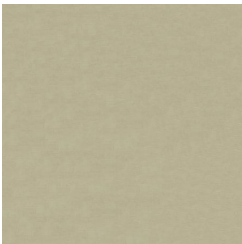
# ENDUREPEL INTRIGUE FUNDAMENTALS II

Fabrics » Woven Fabrics

## Colour & Finish Options



308 NAVY



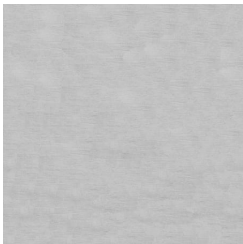
601 OYSTER



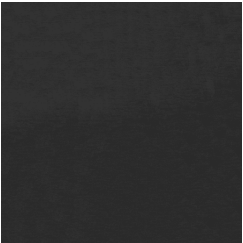
608 STUCCO



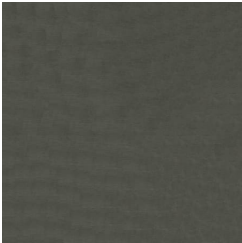
805 PECAN



905 PLATINUM



908 CHARCOAL



94 OTTER