

ENDUREPEL HARPER FUNDAMENTALS II

Fabrics » Woven Fabrics



Brand: **Endurepel**

Applications: **Upholstery**

ENDUREPEL HARPER FUNDAMENTALS II

Fabrics » Woven Fabrics

Endureple Harper is a 137cm wide woven upholstery with a contemporary style that's available in 6 plain colours.

✓ **Moisture Repellant**

✓ **Anti-Bacterial**

✓ **Anti-Microbial**

Description

The Fundamentals II range features 85 coordinating textures and semi-plains that come standard with Endurepel Shield performance finish to repel liquid and make the upholsteries anti-microbial and anti-bacterial. Add Endurepel Barrier for a complete moisture barrier.

Composition

Endurepel Shield - 100% polyester Add Endurepel Barrier for a complete moisture barrier

Pattern Repeat Size

N/A

Roll Size

137cm x Approx 45m - 55m - Available by the lineal metre

Abrasion

145,000+ Double Rubs (Wyzenbeek)

Fire Rating

Tested in accordance with AS1530.3

Spread of Flame Index - 0

Smoke Developed Index - 5

Lead Time

- 3-weeks (approx) from Wednesday subject to stock availability.
- Additional 1-week for Western Australia.
- Additional 2 weeks for Endurepel Barrier.
- Express delivery is available subject to a surcharge. Contact Baresque for details and pricing.

ENDUREPEL HARPER FUNDAMENTALS II

Fabrics » Woven Fabrics

Care Instructions

Always use a clean, white, soft cloth.

Clean in situ using a damp cloth and mild detergent. Sponge down afterwards with a clean, damp cloth.

Using a cloth to pat dry will help eliminate watermarks.

Ensure the pile is brushed back to its natural direction.

Upholstered furniture should be regularly vacuumed or brushed with a soft nylon brush to remove grit or dust, which may damage the pile.

Never use stiff bristles or wire brushes, as they may damage the fabric.

Always test in an inconspicuous area first. If care instructions don't deliver the expected results, cease cleaning method immediately and contact Baresque for assistance.

Warranty

2-year warranty. Visit baresque.com.au/warranty for complete details.

Additional Comments

Add Endurepel Barrier for full Moisture Barrier

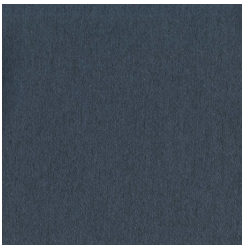
ENDUREPEL HARPER FUNDAMENTALS II

Fabrics » Woven Fabrics

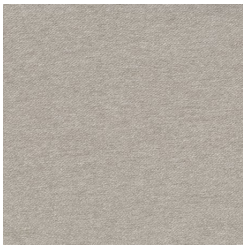
Colour & Finish Options



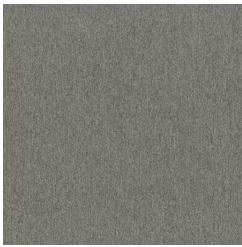
14 POPPY



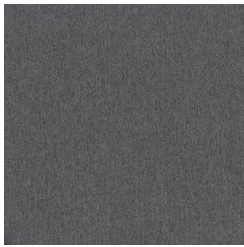
308 INDIGO



608 OYSTER



92 PEWTER



99 MINERAL