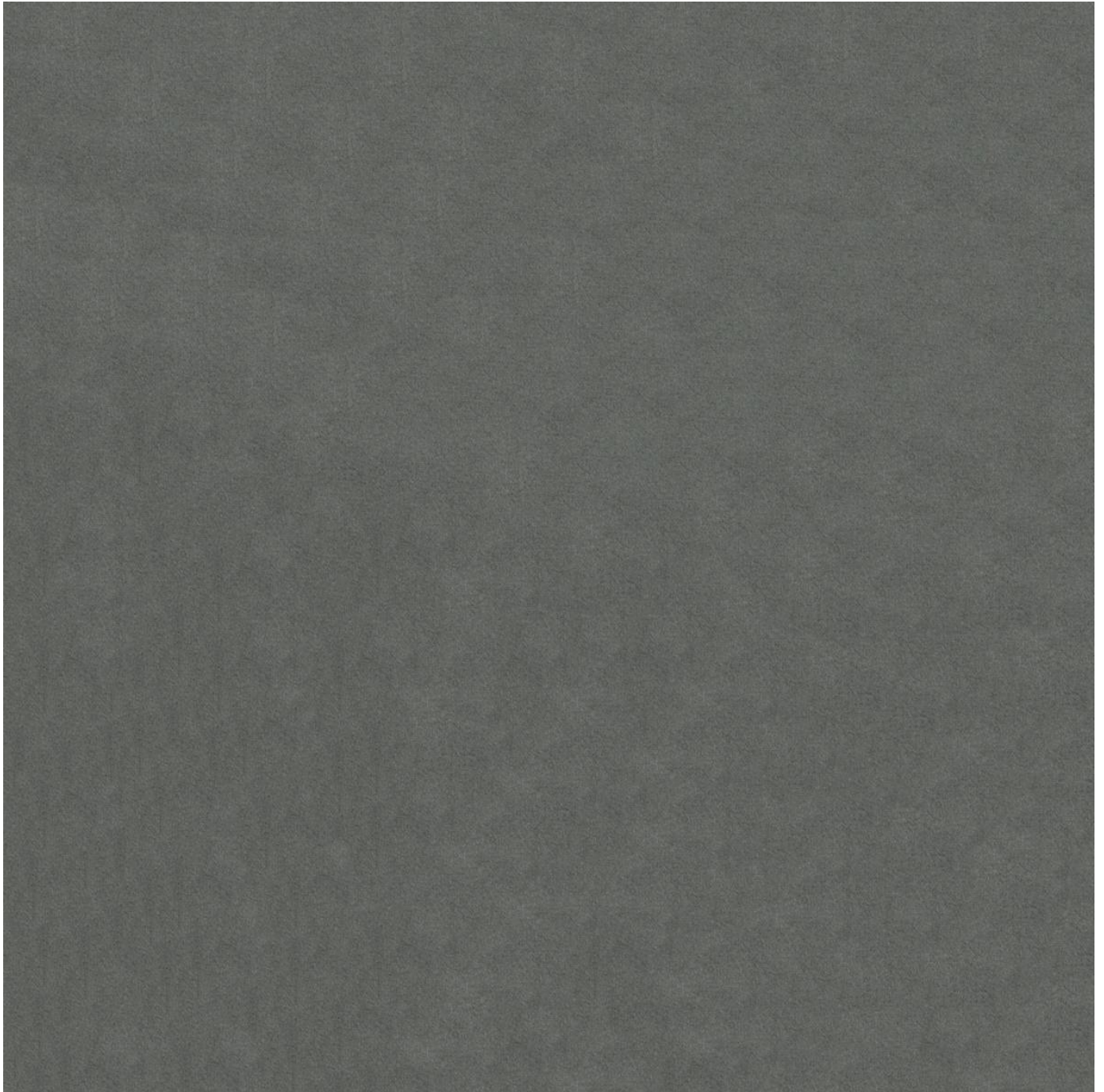


ENDUREPEL FRANKLIN FUNDAMENTALS II

Fabrics » Woven Fabrics



Brand: **Endurepel**

Applications: **Upholstery**

ENDUREPEL FRANKLIN FUNDAMENTALS II

Fabrics » Woven Fabrics

Endurepel Franklin is a 137cm wide woven upholstery available in 11 colours. Easy to clean, anti-bacterial and liquid repellent. Suitable for indoor

✓ **Moisture Repellant**

✓ **Anti-Bacterial**

✓ **Anti-Microbial**

Description	The Fundamentals II range features 85 coordinating textures and semi-plains that come standard with Endurepel Shield performance finish to repel liquid and make the upholsteries anti-microbial and anti-bacterial. Add Endurepel Barrier for a complete moisture barrier.
-------------	---

Composition	Endurepel Shield - 100% polyester Add Endurepel Barrier for a complete moisture barrier
-------------	---

Pattern Repeat Size	N/A
---------------------	-----

Roll Size	137cm x Approx 45m - 55m - Available by the lineal metre
-----------	--

Abrasion	235,000+ Double Rubs (Wyzenbeek)
----------	----------------------------------

Fire Rating	Tested in accordance with AS1530.3 Spread of Flame Index - 0 Smoke Developed Index - 5
-------------	--

Lead Time	<ul style="list-style-type: none">• 3-weeks (approx) from Wednesday subject to stock availability.• Additional 1-week for Western Australia.• Additional 2 weeks for Endurepel Barrier.• Express delivery is available subject to a surcharge. Contact Baresque for details and pricing.
-----------	---

ENDUREPEL FRANKLIN FUNDAMENTALS II

Fabrics » Woven Fabrics

Care Instructions

Always use a clean, white, soft cloth.

Clean in situ using a damp cloth and mild detergent. Sponge down afterwards with a clean, damp cloth.

Using a cloth to pat dry will help eliminate watermarks.

Ensure the pile is brushed back to its natural direction.

Upholstered furniture should be regularly vacuumed or brushed with a soft nylon brush to remove grit or dust, which may damage the pile.

Never use stiff bristles or wire brushes, as they may damage the fabric.

Always test in an inconspicuous area first. If care instructions don't deliver the expected results, cease cleaning method immediately and contact Baresque for assistance.

Warranty

2-year warranty. Visit baresque.com.au/warranty for complete details.

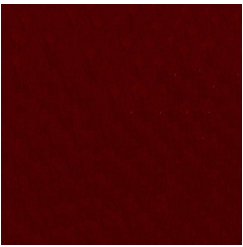
Additional Comments

Add Endurepel Barrier for full Moisture Barrier

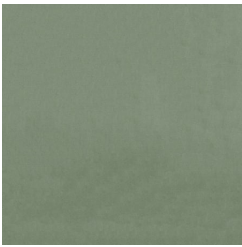
ENDUREPEL FRANKLIN FUNDAMENTALS II

Fabrics » Woven Fabrics

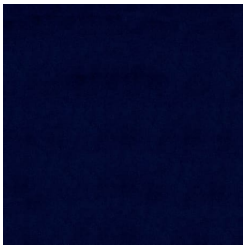
Colour & Finish Options



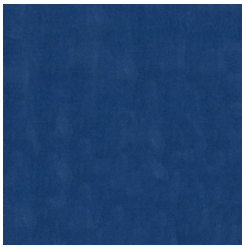
14 THEATRE RED



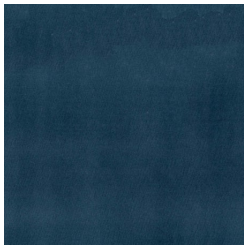
202 SAGE



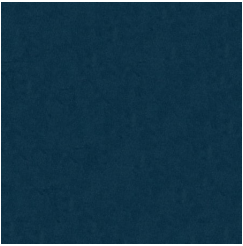
3009 MIDNIGHT



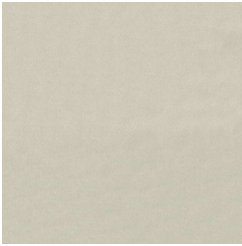
306 FRANKLIN



308 PETROL



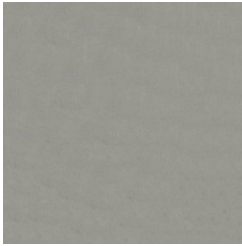
36 CERULEAN



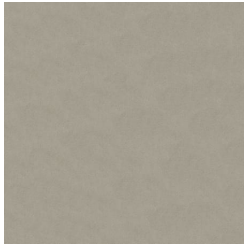
601 OYSTER



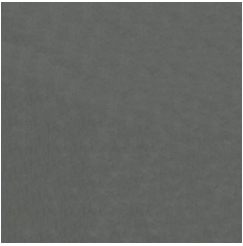
61 SNOW



92 PLATINUM



97 CINDER



99 STEEL