

# ELIZABETH

**Fabrics** » Woven Fabrics

---



Brand: **Ennis Fabrics**

Applications: **Upholstery**

1300 306 399

[info@baresque.com.au](mailto:info@baresque.com.au)

[baresque.com.au](http://baresque.com.au)

1 of 3

# ELIZABETH

Fabrics » Woven Fabrics

Elizabeth is a 142cm wide woven upholstery with a range of 6 plain colours suitable for indoor. Anti-microbial, anti-bacterial and easy to clean

|                     |  |
|---------------------|--|
| Composition         | 65% Polyester, 35% Viscose with an acrylic kiss coat backing   |
| Pattern Repeat Size | N/A  |
| Roll Size           | 142cm x Approx 45m - 55m - Available by the lineal metre   |
| Abrasion            | 60,000+ Double Rubs (Wyzenbeek)  |
| Fire Rating         | This product can be treated with a fire retardant that will ensure it meets Australian Standard 1530.3. Contact Baresque for details.  |
| Lead Time           | <ul style="list-style-type: none"><li>• 2-weeks (approx.) from Wednesday, subject to stock availability.</li><li>• Additional 1-week for Western Australia.</li><li>• Express delivery is available subject to a surcharge. Contact Baresque for details and pricing.</li></ul>  |
| Care Instructions   | <p>Always use a clean, white, soft cloth.</p> <p>Clean in situ using a damp cloth and mild detergent. Sponge down afterwards with a clean, damp cloth.</p> <p>Using a cloth to pat dry will help eliminate watermarks.</p> <p>Ensure the pile is brushed back to its natural direction.</p> <p>Upholstered furniture should be regularly vacuumed or brushed with a soft nylon brush to remove grit or dust, which may damage the pile.</p> <p>Never use stiff bristles or wire brushes, as they may damage the fabric.</p> <p>Always test in an inconspicuous area first. If care instructions don't deliver the expected results, cease cleaning method immediately and contact Baresque for assistance.</p> |
| Warranty            | 2-year warranty. Visit <a href="https://baresque.com.au/warranty">baresque.com.au/warranty</a> for complete details.   |



# ELIZABETH

Fabrics » Woven Fabrics

## Colour & Finish Options



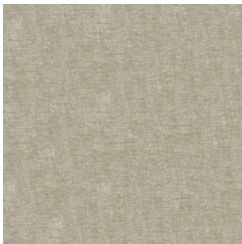
21 CYPRESS



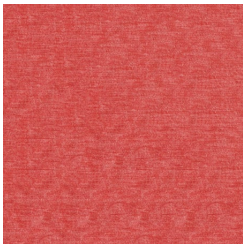
34 TURQUOISE



47 TIMBER



61 OYSTER



102 CORAL



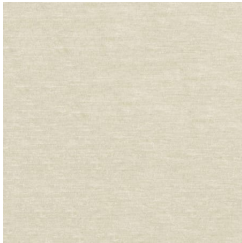
202 CITRINE



302 SPA



308 NAVY



602 PEARL



608 PUMICE



905 PLATINUM



908 CHARCOAL



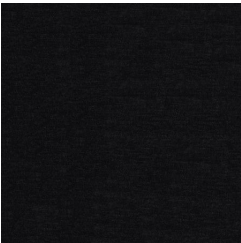
4006 COPPER



4009 NUTMEG



6009 MINK



9009 EBONY