

CHARISMA

Fabrics » Woven Fabrics



Brand: **Sunbrella**

Applications: **Upholstery**

1300 306 399

info@baresque.com.au

baresque.com.au

1 of 4

CHARISMA

Fabrics » Woven Fabrics

Charisma is a 137cm wide woven upholstery with a broad watercolour stroke pattern that's available in 9 colourways. Water, soil and stain repellent

- ✓ **Bleach Cleanable**
- ✓ **Environmentally Friendly**
- ✓ **Extended Warranty**
- ✓ **Moisture Repellant**
- ✓ **Outdoor Suitable**
- ✓ **Solution Dyed Yarns**

Description Charisma is a broad watercolour stroke that will leave you feeling immersed in an impressionistic painting.

Composition 73% Sunbrella® Acrylic / 27% polyester

Environmental Info Sunbrella fabrics are certified Greenguard Gold.

Greenguard addresses the human health component of sustainability with criteria among the most stringent indoor air quality standards in the world. Upholstery fabric that has achieved GREENGUARD Gold Certification has been shown to contribute to healthy indoor air as a product with low chemical and particle emissions.

The Greenguard Gold Certification standard includes health-based criteria for additional chemicals and also requires lower total VOC emissions levels to help ensure that products are acceptable for use in environments like schools and healthcare facilities.

In addition to limiting emissions of more than 360 VOCs and total chemical emissions, Greenguard Gold Certified products also comply with requirements of the state of California's Department of Public Health (CDPH) "Standard Method for the Test and Evaluation of Volatile Organic Chemical Emissions from Indoor Sources Using Environmental Chambers, Version 1.2 (2017)" (also known as California Section 01350).

Office Furniture products that are GREENGUARD Gold Certified are also compliant with the BIFMA X7.1 standard and BIFMA e3 credits 7.6.1, 7.6.2, and 7.6.3.

Pattern Repeat Size 73.9cm V / 72.1cm H

Roll Size 137cm x Approx 50m - Available by the lineal metre

Abrasion 97,000+ Double Rubs (Wyzenbeek)

Fire Rating Tested in accordance with AS1530.3

Spread of Flame Index - 0

Smoke Developed Index - 5

CHARISMA

Fabrics » Woven Fabrics

Lead Time

- 2-weeks (approx.) from Wednesday, subject to stock availability.
 - Additional 1-week for Western Australia.
 - Express delivery is available subject to a surcharge. Contact Baresque for details and pricing.
-

Care Instructions

One of the best ways to keep fabrics looking good is to brush off dirt before it becomes embedded in the fabrics and wipe up spills or clean soon after a stain occurs. The quicker you clean spills and stains, the easier they can be to remove.

Avoid scrubbing or any other abrasive cleaning method. Never use stiff bristles or wire brushes, as they may damage the fabric.

Wipe material with a clean, soft cloth dampened with a mild solution of liquid detergent and warm water.

Repeat using only clean water, then dry with a lint free cloth or air dry.

Avoid using wax polishes, solvents or concentrated abrasives.

For more difficult stains, dampen a soft white cloth with a solution of household bleach (10% bleach / 90% water). Rub gently. Rinse with a water dampened cloth to remove bleach concentration.

Always test in an inconspicuous area first.

If care instructions don't deliver the expected results, cease cleaning method immediately and contact Baresque for assistance.

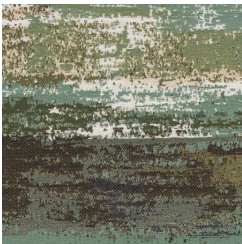
Warranty

2-year warranty. Visit baresque.com.au/warranty for complete details.

Colour & Finish Options



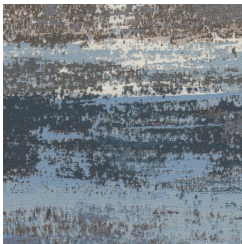
COLOURWAY CARD



1010918 EVERGLADES



1010919 OASIS



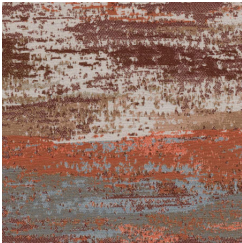
1010920 TRANQUIL



1010921 RIPTIDE



1010922 ROSETTE



1010923 SIENNA



1010924 TIRAMISU



1010925 GOLDENROD



1010926 QUARRY