

BEACON

Fabrics » Woven Fabrics



Brand: **Sunbrella**

Applications: **Upholstery**

1300 306 399

info@baresque.com.au

baresque.com.au

1 of 4

BEACON

Fabrics » Woven Fabrics

Beacon is a 137cm wide woven upholstery that's available in 12 colours. Water, soil and stain repellent for indoor or outdoor use.

- | | | |
|-----------------------------|-----------------------------------|------------------------------|
| ✓ Bleach Cleanable | ✓ Environmentally Friendly | ✓ Extended Warranty |
| ✓ Moisture Repellant | ✓ Outdoor Suitable | ✓ Solution Dyed Yarns |

Description	Beacon's bold colours will draw you in from first glance.
-------------	---

Composition	100% Sunbrella® Acrylic
-------------	-------------------------

Environmental Info	<p>Sunbrella fabrics are certified Greenguard Gold.</p> <p>Greenguard addresses the human health component of sustainability with criteria among the most stringent indoor air quality standards in the world. Upholstery fabric that has achieved GREENGUARD Gold Certification has been shown to contribute to healthy indoor air as a product with low chemical and particle emissions.</p> <p>The Greenguard Gold Certification standard includes health-based criteria for additional chemicals and also requires lower total VOC emissions levels to help ensure that products are acceptable for use in environments like schools and healthcare facilities.</p> <p>In addition to limiting emissions of more than 360 VOCs and total chemical emissions, Greenguard Gold Certified products also comply with requirements of the state of California's Department of Public Health (CDPH) "Standard Method for the Test and Evaluation of Volatile Organic Chemical Emissions from Indoor Sources Using Environmental Chambers, Version 1.2 (2017)" (also known as California Section 01350).</p> <p>Office Furniture products that are GREENGUARD Gold Certified are also compliant with the BIFMA X7.1 standard and BIFMA e3 credits 7.6.1, 7.6.2, and 7.6.3.</p>
--------------------	---

Pattern Repeat Size	N/A
---------------------	-----

Roll Size	137cm x Approx 50m - Available by the lineal metre
-----------	--

Abrasion	70,000+ Double Rubs (Wyzenbeek)
----------	---------------------------------

Fire Rating	Tested in accordance with AS1530.3
	Spread of Flame Index - 0
	Smoke Developed Index - 5

Lead Time

- 2-weeks (approx.) from Wednesday, subject to stock availability.
 - Additional 1-week for Western Australia.
 - Express delivery is available subject to a surcharge. Contact Baresque for details and pricing.
-

Care Instructions

One of the best ways to keep fabrics looking good is to brush off dirt before it becomes embedded in the fabrics and wipe up spills or clean soon after a stain occurs. The quicker you clean spills and stains, the easier they can be to remove.

Avoid scrubbing or any other abrasive cleaning method. Never use stiff bristles or wire brushes, as they may damage the fabric.

Wipe material with a clean, soft cloth dampened with a mild solution of liquid detergent and warm water.

Repeat using only clean water, then dry with a lint free cloth or air dry.

Avoid using wax polishes, solvents or concentrated abrasives.

For more difficult stains, dampen a soft white cloth with a solution of household bleach (10% bleach / 90% water). Rub gently. Rinse with a water dampened cloth to remove bleach concentration.

Always test in an inconspicuous area first.

If care instructions don't deliver the expected results, cease cleaning method immediately and contact Baresque for assistance.

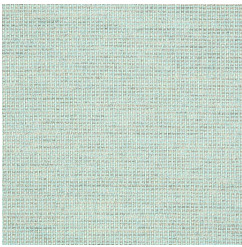
Warranty

2-year warranty. Visit baresque.com.au/warranty for complete details.

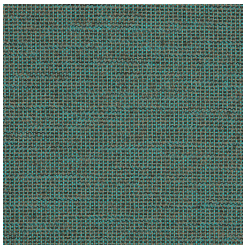
Colour & Finish Options



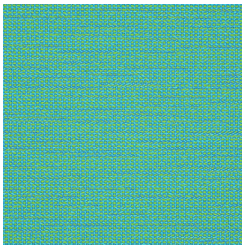
COLOURWAY CARD



1010779 SPA



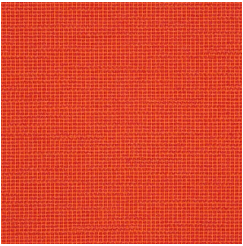
1010780 PEACOCK



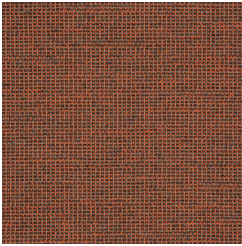
1010781 ARUBA



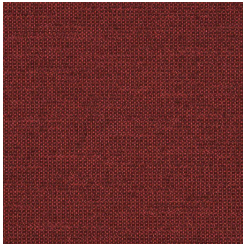
1010782 LIMELIGHT



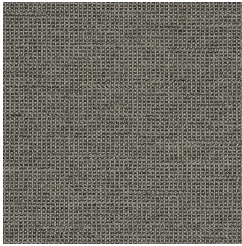
1010783 PAPAYA



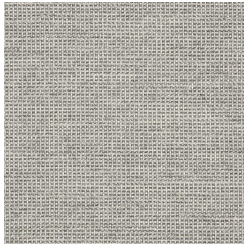
1010784 FIRESIDE



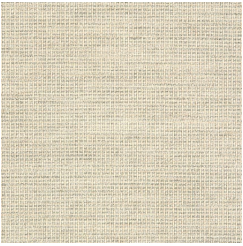
1010785 RASPBERRY



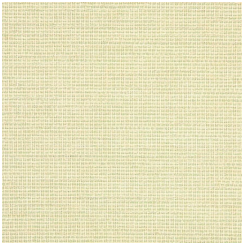
1010786 FLINT



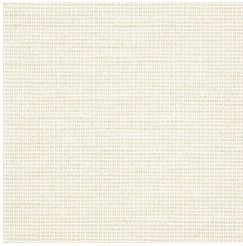
1010787 CONCRETE



1010788 DUNE



1010789 ECRU



1010790 CLOUD