

# VOLTAGE DIMENSIONAL

**Fabrics** » Vinyl and Faux Leather Fabrics

---



Brand: **Concertex**

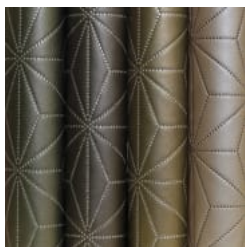
Collections: **Dimensional**

Applications: **Upholstery**

# VOLTAGE DIMENSIONAL

**Fabrics** » Vinyl and Faux Leather Fabrics

---



# VOLTAGE DIMENSIONAL

**Fabrics** » Vinyl and Faux Leather Fabrics

Voltage-Dimensional is a padded faux leather coated fabric impervious to moisture embossed with a geometric pattern available in 12 colours.

✓ **Bleach Cleanable**

✓ **Moisture Barrier**

✓ **Anti-Bacterial**

✓ **Anti-Microbial**

**Description** Perfect for bedheads or upholstered booth seating, DIMENSIONAL is a revolutionary, padded faux leather created by an ultrasonic sealing process. It is impervious to moisture and has extreme depth for 3 dimensional look while flexible enough for easy upholstering. The faux leather surface passes over 100,000 double rubs and contains a built-in graffiti-free layer for stain-free atmosphere. Stains and ballpoint pen marks can easily be wiped away with just a dry towel. Bleach solution can also be used.

**Composition** 100% polyurethane on a 100% pollex backing

**Environmental Info**

- PVC free
- Phthalate Free
- DMF Free
- No added fire retardant
- Anti-Bacterial
- Healthier Hospitals compliant
- Complies with CAL01351

**Pattern Repeat Size** 8.5cm V. x 11cm H

**Roll Size** 137cm x 45.7m - Available by the lineal metre

**Abrasion** 100,000 + double rubs Wyzenbeek

**Fire Rating**

- Tested in accordance with AS1530.3
- Spread of Flame Index - 0
- Smoke Developed Index - 5

# VOLTAGE DIMENSIONAL

Fabrics » Vinyl and Faux Leather Fabrics

---

## Lead Time

- 2-weeks (approx.) from Wednesday, subject to stock availability.
  - Additional 1-week for Western Australia.
  - Express delivery is available subject to a surcharge. Contact Baresque for details and pricing.
- 

## Care Instructions

Most stains and ballpoint pen marks can be removed with a clean dry towel.

Wipe material with a clean, soft cloth dampened with a mild solution of liquid detergent and warm water. Repeat using only clean water, then dry with a lint free cloth.

Avoid using wax polishes, solvents or concentrated abrasives.

For more difficult stains, dampen a soft white cloth with a solution of household bleach (5:1). Rub gently. Rinse with a water dampened cloth to remove bleach concentration.

Always test in an inconspicuous area first. If care instructions don't deliver the expected results, cease cleaning method immediately and contact Baresque for assistance.

---

## Warranty

2-year warranty. Visit [baresque.com.au/warranty](https://baresque.com.au/warranty) for complete details.

---



# VOLTAGE DIMENSIONAL

Fabrics » Vinyl and Faux Leather Fabrics

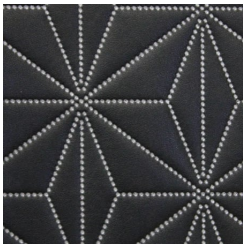
## Colour & Finish Options

### COLOURWAY CARD

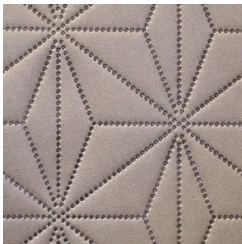
COLOURWAY CARD



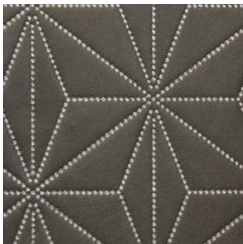
CITRINE



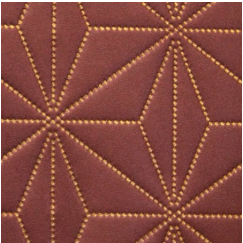
EBONITE



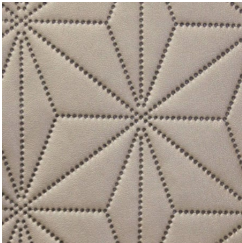
FLINT



GUNMETAL



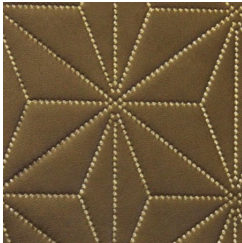
GYPSY



IVORY



LATTE



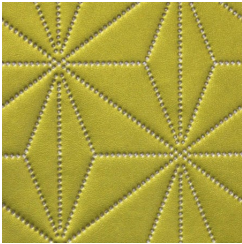
MUDDY GOLD



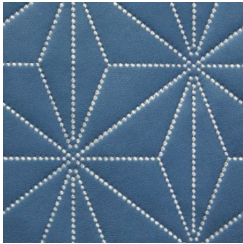
PENNY



PEWTER



SPRING



TURQUOISE