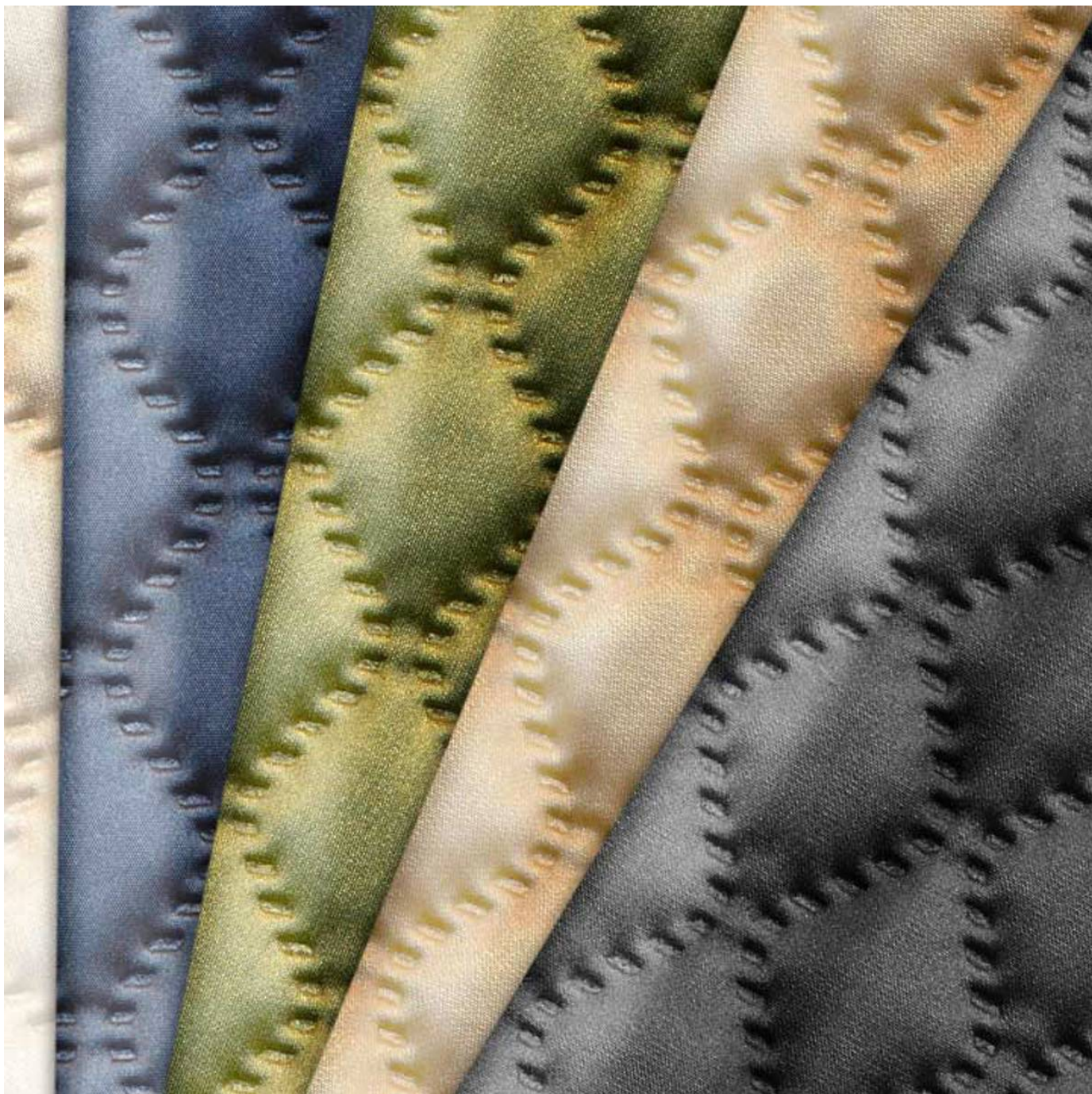


THEORY

Fabrics » Vinyl and Faux Leather Fabrics



Brand: **Concertex**

Applications: **Upholstery**

THEORY

Fabrics » Vinyl and Faux Leather Fabrics

Theory is a 137cm wide coated fabric embossed in a diamond pattern available in 8 colours. Anti-bacterial and bleach cleanable

✓ **Bleach Cleanable**

✓ **Moisture Barrier**

✓ **Anti-Bacterial**

Composition	100% polyurethane on a 100% polyester backing
-------------	---

Environmental Info	PVC free Phthalate Free DMF Free No added fire retardant Anti-Bacterial Healthier Hospitals compliant Complies with CAL01351
--------------------	--

Pattern Repeat Size	3.1cm V / 3.1cm H
---------------------	-------------------

Roll Size	132cm wide x 18.2m - Available by the half (9.1m) or full roll (18.2m) only
-----------	---

Abrasion	100,000 + double rubs Wyzenbeek
----------	---------------------------------

Fire Rating	Tested in accordance with AS1530.3 Spread of Flame Index - 0 Smoke Developed Index - 5
-------------	--

Lead Time	<ul style="list-style-type: none">• 2-weeks (approx.) from Wednesday, subject to stock availability.• Additional 1-week for Western Australia.• Express delivery is available subject to a surcharge. Contact Baresque for details and pricing.
-----------	---

THEORY

Fabrics » Vinyl and Faux Leather Fabrics

Care Instructions

Most stains and ballpoint pen marks can be removed with a clean dry towel.

Wipe material with a clean, soft cloth dampened with a mild solution of liquid detergent and warm water. Repeat using only clean water, then dry with a lint free cloth.

Avoid using wax polishes, solvents or concentrated abrasives.

For more difficult stains, dampen a soft white cloth with a solution of household bleach (5:1). Rub gently. Rinse with a water dampened cloth to remove bleach concentration.

Always test in an inconspicuous area first. If care instructions don't deliver the expected results, cease cleaning method immediately and contact Baresque for assistance.

Warranty

2-year warranty. Visit baresque.com.au/warranty for complete details.

Additional Comments

Theory should only be stapled. Do not use adhesives on this product as adhesives seeping into the padding will deform the natural shape.

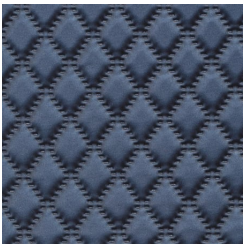
THEORY

Fabrics » Vinyl and Faux Leather Fabrics

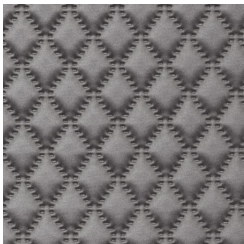
Colour & Finish Options

COLOURWAY CARD

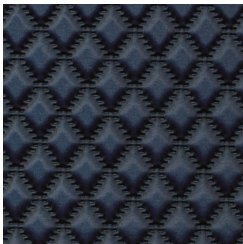
COLOURWAY CARD



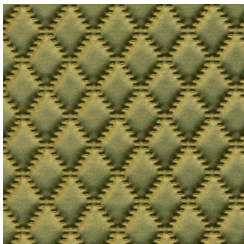
CLIPPER



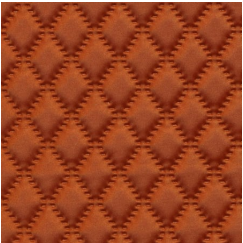
HAZE



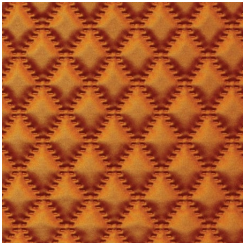
OCEANIC



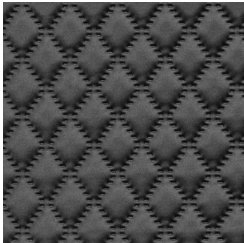
PASTURE



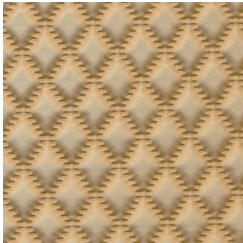
PEACH ROSE



SAFFRON



SEAL



SILK