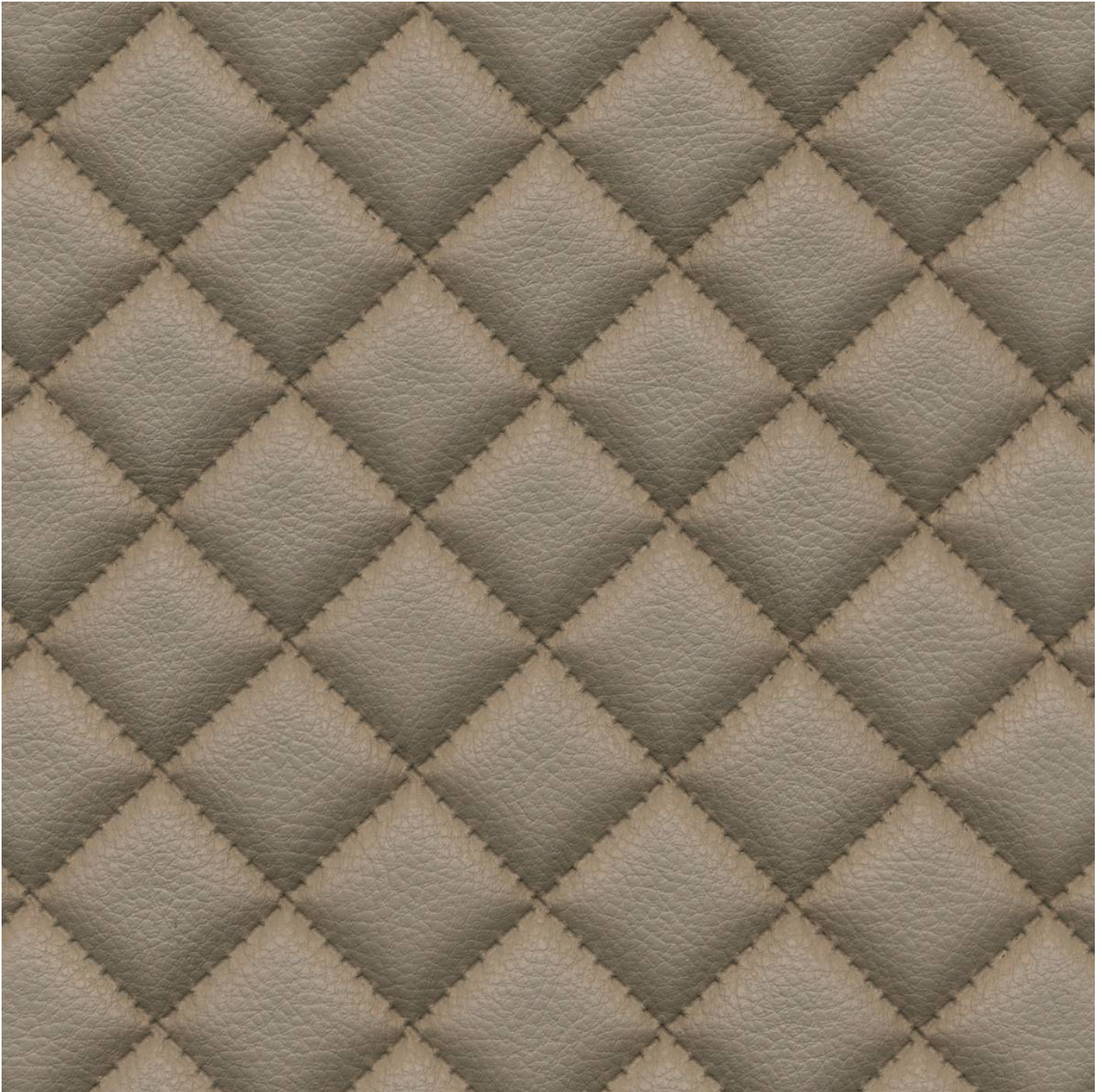


# SOLITAIRE DIMENSIONAL

Fabrics » Vinyl and Faux Leather Fabrics

---



Brand: **Concertex**

Collections: **Dimensional**

Applications: **Upholstery**

1300 306 399

[info@baresque.com.au](mailto:info@baresque.com.au)

[baresque.com.au](http://baresque.com.au)

1 of 4

# SOLITAIRE DIMENSIONAL

Fabrics » Vinyl and Faux Leather Fabrics

Solitaire is a 137cm wide padded faux leather impervious to moisture upholstery fabric that's available in 20 colours.

✓ **Bleach Cleanable**

✓ **Moisture Barrier**

✓ **Anti-Bacterial**

## Description

Perfect for bedheads or upholstered booth seating, DIMENSIONAL is a revolutionary, padded faux leather created by an ultrasonic sealing process. It is impervious to moisture and has extreme depth for 3 dimensional look while flexible enough for easy upholstering. The faux leather surface passes over 100,000 double rubs and contains a built-in graffiti-free layer for stain-free atmosphere. Stains and ballpoint pen marks can easily be wiped away with just a dry towel. Bleach solution can also be used.

## Composition

100% polyurethane face on a 100% polyester backing

## Environmental Info

PVC free  
Phthalate Free  
DMF Free  
No added fire retardant  
Anti-Bacterial  
Healthier Hospitals compliant  
Complies with CAL01351

## Pattern Repeat Size

3.5cm V / 3.5cm H

## Roll Size

132cm wide X 27.4m- Available by the lineal metre.

## Abrasion

100,000+ Double Rubs (Wyzenbeek)

## Fire Rating

Tested in accordance with AS1530.3  
Spread of Flame Index - 0  
Smoke Developed Index - 5

## Lead Time

- 2-weeks (approx.) from Wednesday, subject to stock availability.
- Additional 1-week for Western Australia.
- Express delivery is available subject to a surcharge. Contact Baresque for details and pricing.

# SOLITAIRE DIMENSIONAL

Fabrics » Vinyl and Faux Leather Fabrics

---

## Care Instructions

Use cloth with any of the following in preferred order of use:

- 1: Clear warm water
- 2: Mild solution of liquid detergent and warm water
- 3: Isopropyl Alcohol (a.k.a. rubbing alcohol)

Remove any detergent with a clean, damp cloth. Gently pat dry.

For more difficult stains, dampen a soft white cloth with a solution of household bleach (10% bleach / 90% water). Rub gently. Rinse with a water dampened cloth to remove bleach concentration.

Do not use solvent based or concentrated abrasive cleaning agents, lacquer thinners or nail polish remover as these may cause discolouration over a period of time.

Always test in an inconspicuous area first.

If care instructions don't deliver the expected results, cease cleaning method immediately and contact Baresque for assistance.

---

## Warranty

2-year warranty. Visit [baresque.com.au/warranty](https://baresque.com.au/warranty) for complete details.

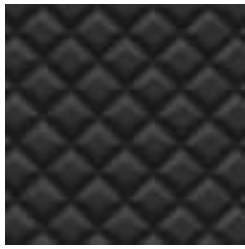
---

# SOLITAIRE DIMENSIONAL

Fabrics » Vinyl and Faux Leather Fabrics

## Colour & Finish Options

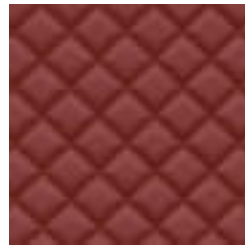
**COLOURWAY  
CARD**



BLACK



CHARDONNAY

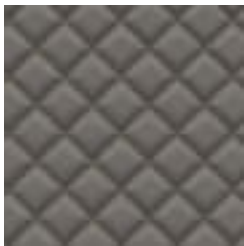


FIERCE

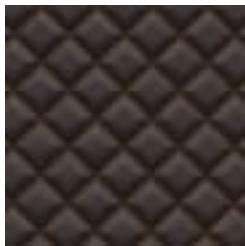


INK

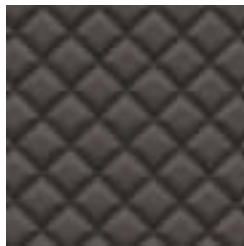
COLOURWAY CARD



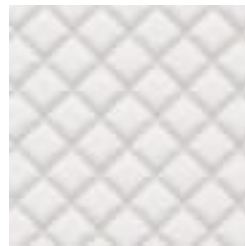
MINERAL



MINK



SMOKE



SNOW



TERRA