

MORSE CODE

Fabrics » Vinyl and Faux Leather Fabrics



Brand: **Concertex**

Applications: **Upholstery**

MORSE CODE

Fabrics » Vinyl and Faux Leather Fabrics

Morse Code is a 137cm wide coted fabric that's anti-bacterial and bleach cleanable ideal for indoor use. Available in 12 colours.

✓ **Bleach Cleanable**

✓ **Moisture Barrier**

✓ **Anti-Bacterial**

✓ **Anti-Microbial**

Composition	100% polyurethane on a 100% pollex backing
-------------	--

Environmental Info	PVC free Phthalate Free DMF Free No added fire retardant Anti-Bacterial Healthier Hospitals compliant Complies with CAL01351
--------------------	--

Pattern Repeat Size	16.7cm V. x 17.7cm H
---------------------	----------------------

Roll Size	137cm x Approx 50m - Available by the lineal metre
-----------	--

Abrasion	100,000 + double rubs Wyzenbeek
----------	---------------------------------

Fire Rating	Tested in accordance with AS1530.3 Spread of Flame Index - 0 Smoke Developed Index - 5
-------------	--

Lead Time	<ul style="list-style-type: none">• 2-weeks (approx.) from Wednesday, subject to stock availability.• Additional 1-week for Western Australia.• Express delivery is available subject to a surcharge. Contact Baresque for details and pricing.
-----------	---

MORSE CODE

Fabrics » Vinyl and Faux Leather Fabrics

Care Instructions

Most stains and ballpoint pen marks can be removed with a clean dry towel.

Wipe material with a clean, soft cloth dampened with a mild solution of liquid detergent and warm water. Repeat using only clean water, then dry with a lint free cloth.

Avoid using wax polishes, solvents or concentrated abrasives.

For more difficult stains, dampen a soft white cloth with a solution of household bleach (5:1). Rub gently. Rinse with a water dampened cloth to remove bleach concentration.

Always test in an inconspicuous area first. If care instructions don't deliver the expected results, cease cleaning method immediately and contact Baresque for assistance.

Warranty

2-year warranty. Visit baresque.com.au/warranty for complete details.

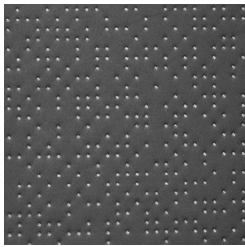
MORSE CODE

Fabrics » Vinyl and Faux Leather Fabrics

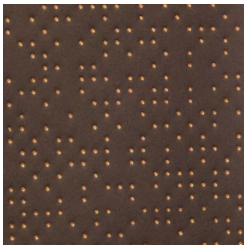
Colour & Finish Options

COLOURWAY CARD

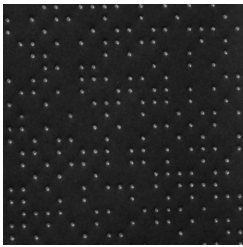
COLOURWAY CARD



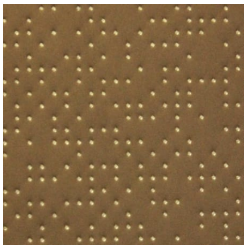
CHARCOAL



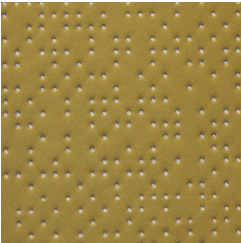
DK. ESPRESSO



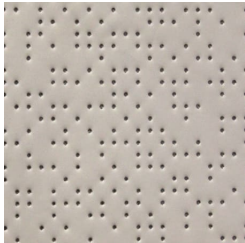
DUSK



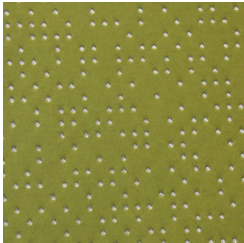
ELK



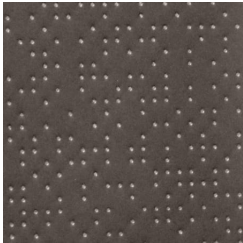
HONEYCOMB



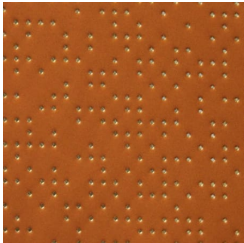
LINEN



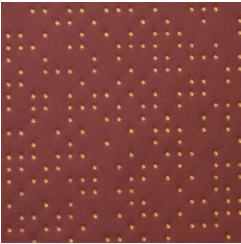
MATCHA



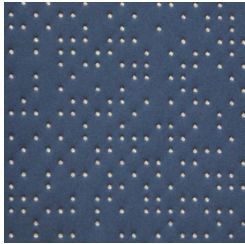
PALLADIUM



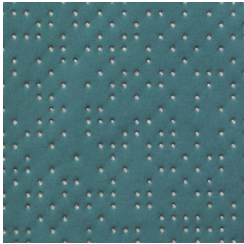
PERSIMMON



RUBY RED



SAPPHIRE



SEA GREEN