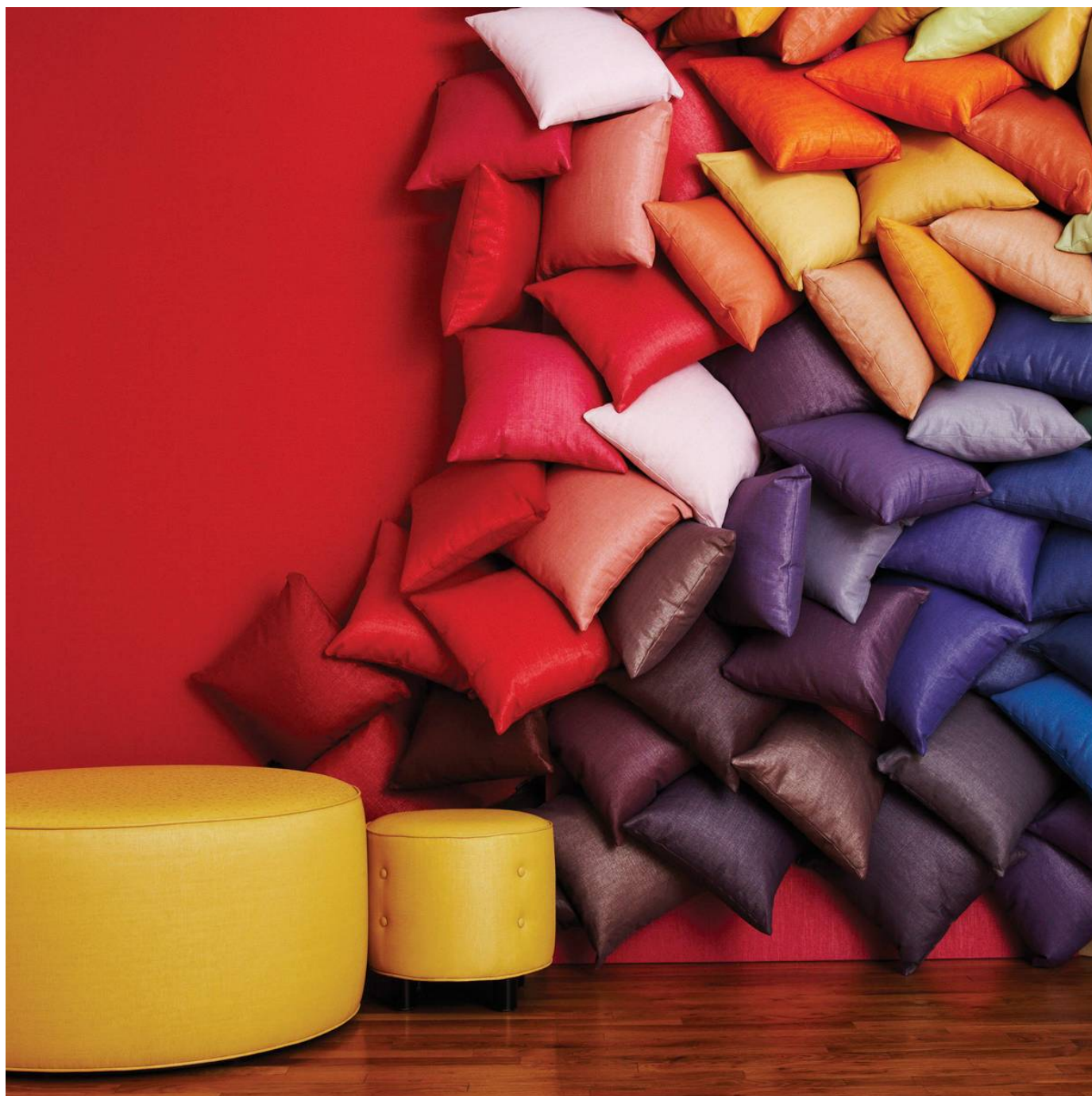


# METEOR XOREL

Wallcoverings » Commercial Wallcoverings



Brand: **Xorel**

Applications: **Walls, Upholstery**

1300 306 399

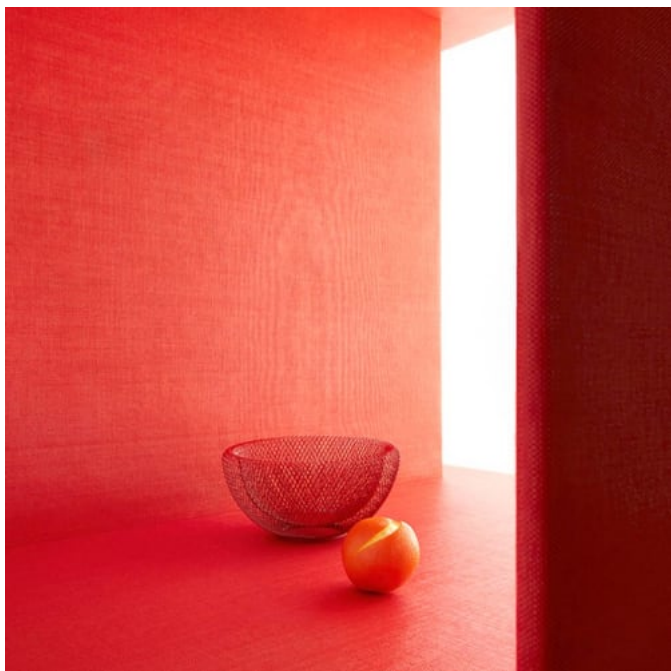
[info@baresque.com.au](mailto:info@baresque.com.au)

[baresque.com.au](http://baresque.com.au)

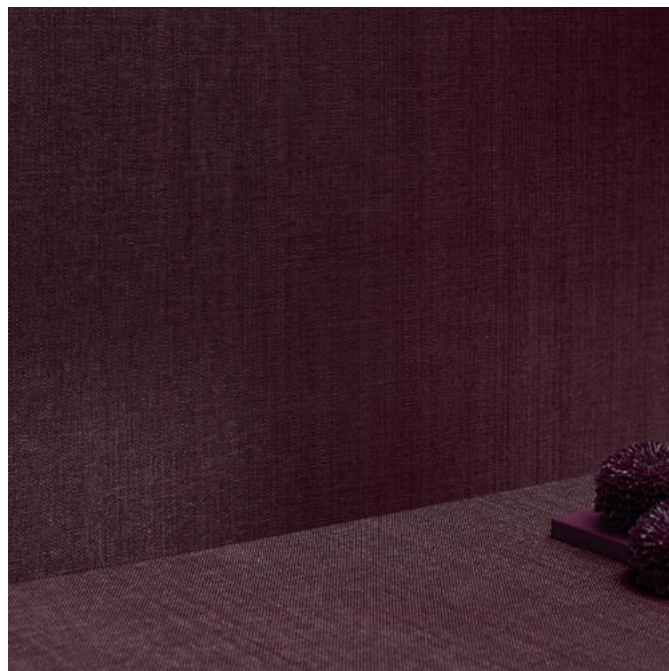
1 of 9

# METEOR XOREL

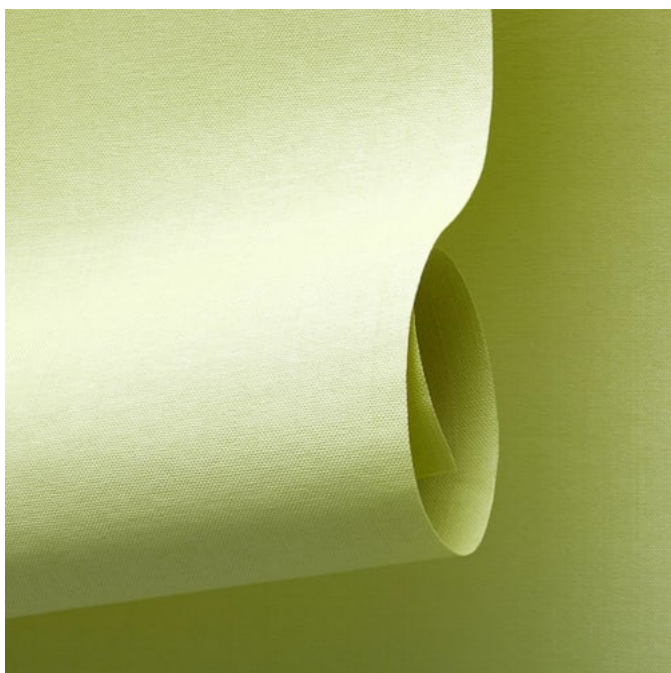
Wallcoverings » Commercial Wallcoverings



meteor-promo-4.jpg



meteor-promo-7.jpg



meteor-promo-8.jpg

# METEOR XOREL

Wallcoverings » Commercial Wallcoverings

Meteor is a standard woven pattern that comes in a range of 80 colours making it the perfect solution to evoke any space's desired voice through hue.

- |                                |                                   |                            |
|--------------------------------|-----------------------------------|----------------------------|
| ✓ <b>Bleach Cleanable</b>      | ✓ <b>Environmentally Friendly</b> | ✓ <b>Extended Warranty</b> |
| ✓ <b>High Stain Resistance</b> | ✓ <b>Phthalate Free</b>           | ✓ <b>PVC-Free</b>          |
| ✓ <b>Solution Dyed Yarns</b>   | ✓ <b>Ultra Performance</b>        | ✓ <b>Acoustic</b>          |

## Description

Xorel is a technologically advanced and environmentally sound problem-solving woven textile which enables a wide range of design possibilities to be realized. All the high-performance characteristics of Xorel emanate from the yarn. Simply put, nothing is added to the woven product to enhance performance, no finishes, no coatings.

### FEATURES + BENEFITS:

- \* Bleach cleanable, anti-microbial
- \* 7 Year Warranty
- \* Super durable - 1,000,000 + double rubs
- \* Multi-tasking

Xorel is a registered trademark and license to distribute is granted by permission of Carnegie Fabrics Inc. USA.

## How to Specify

1. Colour
  2. Backing - Available Unbacked or with X-Protect Wall, X-Protect Sit or Acrylic backings.
- Check out the Xorel Backings guide on the DOWNLOAD tab.

## Composition

100% Xorel. Available Unbacked (for wrapped panels) or with X-Protect Wall (for wallcoverings), X-Protect Sit (for upholstery) or acrylic (for wrapped panels with glue) backings

## Environmental Info

Xorel's high performance does not come at an environmental cost as it achieves high standards for sustainability.

All testing/certifying is done by third party independent organizations including:- Scientific Certification Systems (SCS) – Indoor Air Quality (GOLD)- Vincotte – Biobased Content (LEVELS 3/4)- USDA Biobased – Meeting Government Biobased Regulations (PREFERRED)- Cradle to Cradle Institute – Full Lifecycle Assessment (GOLD)- NSF – FACTS certification (NSF 336)

Xorel products can also help a project achieve multiple credits under LEED for commercial interiors:Material Sourcing (Rapidly Renewable Content)Indoor Air Quality (SCS Indoor Advantage Gold)Material Optimization (Cradle to Cradle Gold)Material Transparency (Healthy Product Declaration)

# METEOR XOREL

Wallcoverings » Commercial Wallcoverings

Pattern Repeat Size	N/A
Roll Size	Unbacked - 142cm X-Protect Wall - 132cm X-Protect Sit - 137cm Acrylic Backed - 137cm x Approx 60m - available by the lineal metre. MINIMUM ORDER for X-Protect Sit - 5 lineal metres MINIMUM ORDER for Acrylic Backed - 15 lineal metres
Abrasion	1,000,000 + double rubs Wyzenbeek
Fire Rating	As a wallcovering - Tested in accordance with AS/NZS 3837 and AS 5637.1:2015 for the purposes of Group Number Classification as specified in the NCC Volume One Specification C1.10 Clause 4  Classification - Group 1  Specific Extinction - Less than 250 m <sup>2</sup> /kg  As a fabric - Tested in accordance with AS1530.3  Spread of Flame Index - 0  Smoke Developed Index - 4
Lead Time	<ul style="list-style-type: none"><li>• 5-weeks (approx) from Wednesday subject to stock availability.</li><li>• Additional 1-week for Western Australia.</li><li>• Unbacked 2-3 weeks.</li><li>• Express delivery is available subject to a surcharge. Contact Baresque for details and pricing</li></ul>
Suggested Installation	As a wallcovering - trim selvedge and butt join.  Download the Installation Instructions for details.  Baresque recommends and supply Roman brand adhesives and primers.

# METEOR XOREL

Wallcoverings » Commercial Wallcoverings

---

## Care Instructions

Xorel yarns are non-absorbent; dust and stains cannot penetrate them.

Regular maintenance will keep the fabric looking new for many years. Periodic vacuuming will remove dust that may settle between the yarns.

Most stains that dry between the yarns or on the surface can be eliminated by wiping the fabric with a cloth moistened with hot tap water. Some stains may require additional treatment. These stains can be cleaned with a variety of water or solvent based cleaners.

When using solvent based cleaners on paperbacked Xorel fabric, test on a small area first. Residue from these cleaners must be removed with hot water and a clean sponge. After cleaning, towel dry.

Hardened solids can be removed with stiff brush or a sharp-edged instrument without damaging the fabric. However, the brush or sharp instrument should not be used close to seams.

Hospital grade disinfectant cleaners can be safely used on Xorel fabrics. Always follow the directions for the specific brand being used as contact times may vary depending on the product. Diluted bleach solution (up to 40%) can also be used on Xorel for disinfecting purposes.

Always test in an inconspicuous area first. If care instructions don't deliver the expected results, cease cleaning method immediately and contact Baresque for assistance.

---

## Warranty

7-year warranty. Visit [baresque.com.au/warranty](https://baresque.com.au/warranty) for complete details.

---

## Additional Comments

Xorel is a multi-tasking material being equally suited as a direct applied wallcovering, wrapped panel material or as an upholstery solution. In addition, it is notable for its versatility in a wide range of projects; wherever both beauty and performance are required.

X Protect Wall prevents stains and other substances from reaching the foam or paper backing.

X Protect Sit increases cushion protection and enhances Xorels superior performance attributes.

With X Protect, Xorel is 100% moisture repellent.

---



# METEOR XOREL

Wallcoverings » Commercial Wallcoverings

## Colour & Finish Options

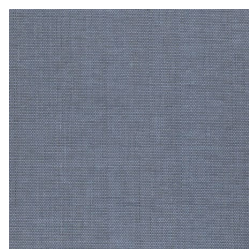
### COLOURWAY CARD

				
COLOURWAY CARD	6427 2000	6427 2001	6427 2002	6427 2004
				
6427 2005	6427 2006	6427 2007	6427 2008	6427 2009
				
6427 2010	6427 2011	6427 2012	6427 2013	6427 2014
				
6427 2015	6427 2016	6427 2017	6427 2018	6427 2019
				
6427 2020	6427 2021	6427 2022	6427 2023	6427 2024

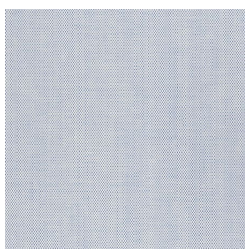


# METEOR XOREL

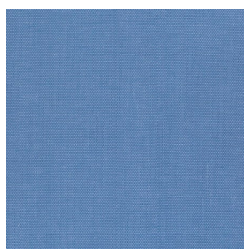
Wallcoverings » Commercial Wallcoverings



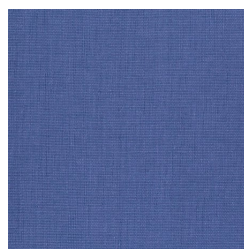
6427 2025



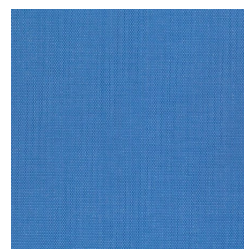
6427 2026



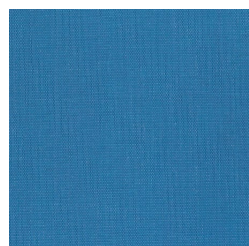
6427 2027



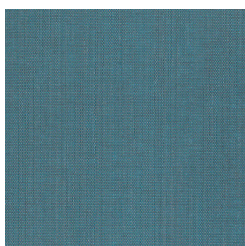
6427 2028



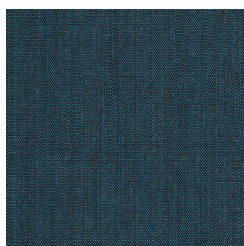
6427 2029



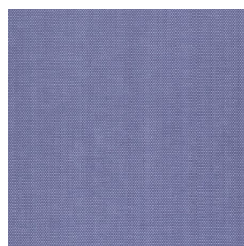
6427 2030



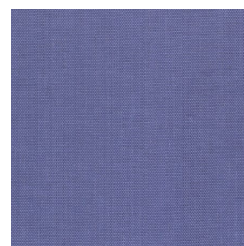
6427 2031



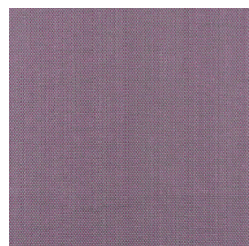
6427 2032



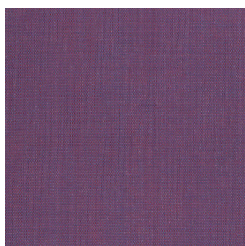
6427 2033



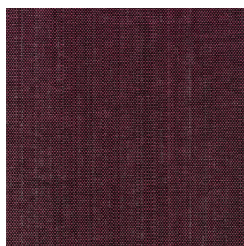
6427 2034



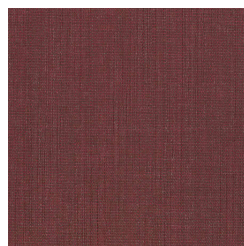
6427 2035



6427 2036



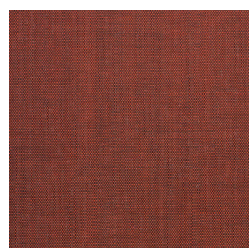
6427 2037



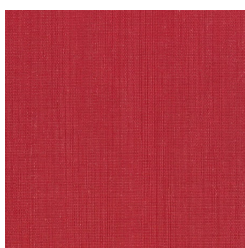
6427 2038



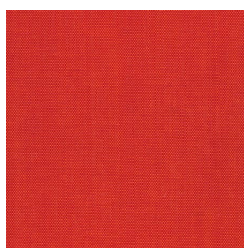
6427 2039



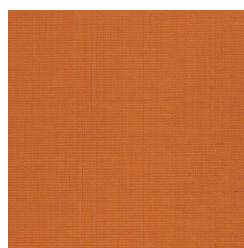
6427 2040



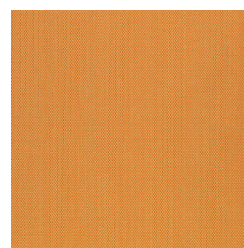
6427 2041



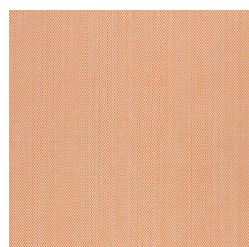
6427 2042



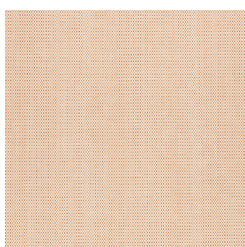
6427 2043



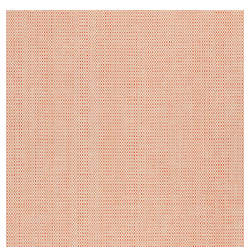
6427 2044



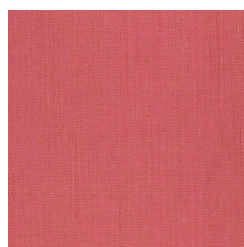
6427 2045



6427 2046



6427 2047



6427 2048

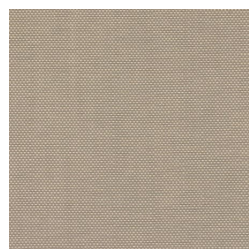


6427 700

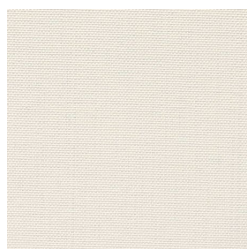


# METEOR XOREL

Wallcoverings » Commercial Wallcoverings



6427 703



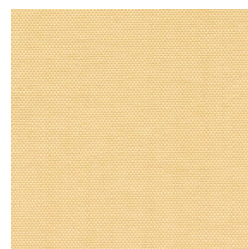
6427 705



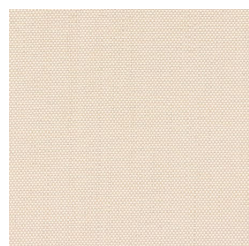
6427 706



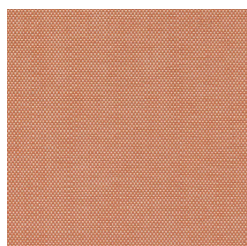
6427 711



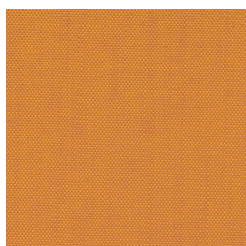
6427 712



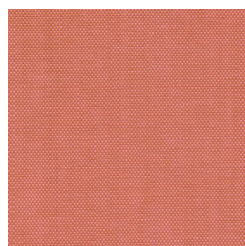
6427 717



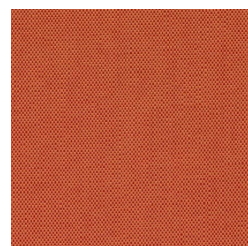
6427 718



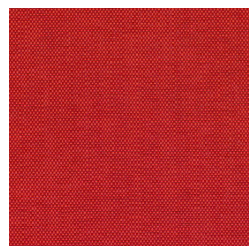
6427 721



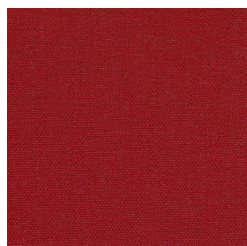
6427 724



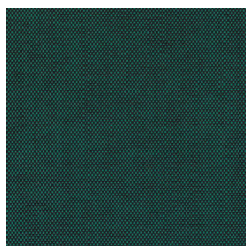
6427 726



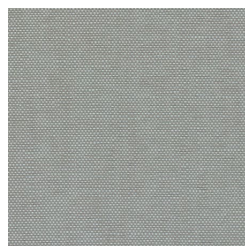
6427 727



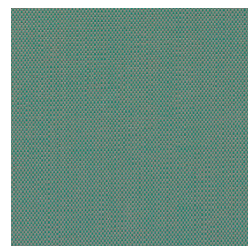
6427 728



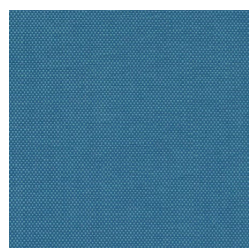
6427 734



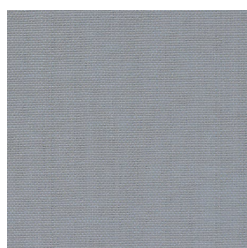
6427 735



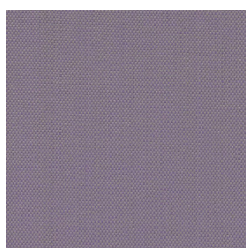
6427 737



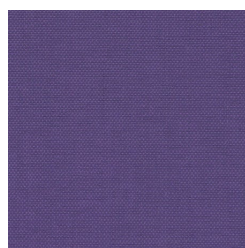
6427 739



6427 742



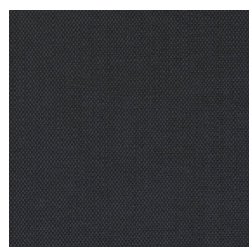
6427 747



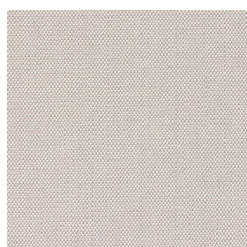
6427 750



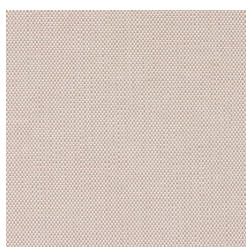
6427 751



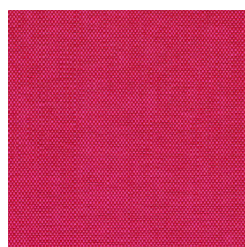
6427 752



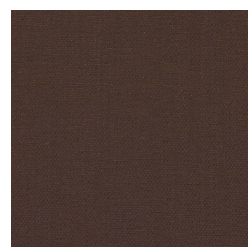
6427 753



6427 759



6427 761



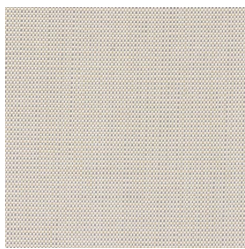
6427 764



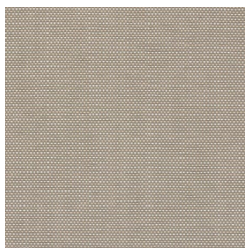
# METEOR XOREL

Wallcoverings » Commercial Wallcoverings

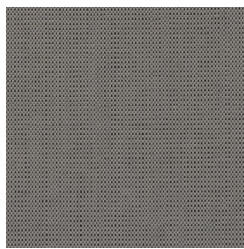
---



6427 765



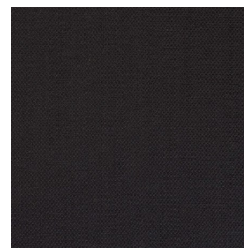
6427 766



6427 768



6427 769



6427 770