

# JOURNEY AIRE

**Fabrics** » Vinyl and Faux Leather Fabrics

---



Brand: **Concertex**

Applications: **Upholstery**

1300 306 399

[info@baresque.com.au](mailto:info@baresque.com.au)

[baresque.com.au](http://baresque.com.au)

1 of 4

# JOURNEY AIRE

**Fabrics** » Vinyl and Faux Leather Fabrics

Journey is a 137cm wide ultra-soft and ink/stain resistant coated fabric with soft touch and matte surface that's available in 7 colours

✓ **Bleach Cleanable**

✓ **Ultra Performance**

✓ **Moisture Barrier**

✓ **Anti-Bacterial**

✓ **Anti-Microbial**

Description	Aire is a silicone hybrid combining silicone and polyurethane to create an ultra-soft and ink/stain resistant coated fabric. Even with its extremely soft touch and matte surface, the coated fabric is ideal for all applications. Stains can be cleaned with just water and a dry towel. Bleach can also be used.
Composition	Face - 100% Silicone, Inherently Graffiti-Free Middle - 100% polyurethane
Environmental Info	PVC free Phthalate Free DMF Free No added fire retardant Anti-Bacterial Healthier Hospitals compliant Complies with CAL01351
Pattern Repeat Size	81.3cm V / 61cm H
Roll Size	140cm x N/A - Available by the lineal metre. MINIMUM ORDER 4 METRES
Abrasion	200,000 double rubs (Wyzenbeek)
Fire Rating	Tested in accordance with AS1530.3 Spread of Flame Index - 0 Smoke Developed Index - 5
Lead Time	<ul style="list-style-type: none"><li>• 2-weeks (approx.) from Wednesday, subject to stock availability.</li><li>• Additional 1-week for Western Australia.</li><li>• Express delivery is available subject to a surcharge. Contact Baresque for details and pricing.</li></ul>

# JOURNEY AIRE

**Fabrics** » Vinyl and Faux Leather Fabrics

---

## Care Instructions

Wipe material with a clean, soft cloth dampened with a mild solution of liquid detergent and warm water. Repeat using only clean water, then dry with a lint free cloth.

Avoid using wax polishes, solvents or concentrated abrasives. For more difficult stains, dampen a soft white cloth with a solution of household bleach (10% bleach / 90% water). Rub gently. Rinse with a water dampened cloth to remove bleach concentration.

Always test in an inconspicuous area first.

---

## Warranty

2-year warranty. Visit [baresque.com.au/warranty](https://baresque.com.au/warranty) for complete details.

---

## Additional Comments

Naturally breathable for cozy comfortness and luxurious soft touch.

---

# JOURNEY AIRE

**Fabrics** » Vinyl and Faux Leather Fabrics

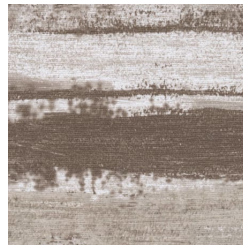
## Colour & Finish Options

### COLOURWAY CARD

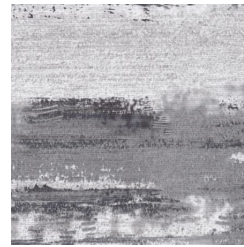
COLOURWAY CARD



DAYLIGHT



ETHEREAL



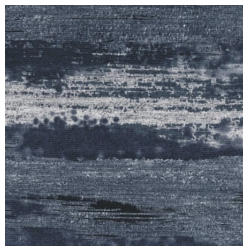
NIGHTFALL



SUNSET



TEMPEST



TIDAL



ZEPHYR