

# CROSSCUT

**Fabrics** » Vinyl and Faux Leather Fabrics



Brand: **Concertex**

Applications: **Upholstery**

1300 306 399

[info@baresque.com.au](mailto:info@baresque.com.au)

[baresque.com.au](http://baresque.com.au)

1 of 4

# CROSSCUT

**Fabrics** » Vinyl and Faux Leather Fabrics

Crosscut is a 132cm wide coated fabric ideal for indoors. Bleach cleanable and resistant to stains and marks that can be removed with a dry towel.

✓ **Bleach Cleanable**

✓ **Moisture Barrier**

✓ **Anti-Bacterial**

Composition	100% polyurethane on a 100% polyester backing
-------------	---

Environmental Info	PVC free Phthalate Free DMF Free No added fire retardant Anti-Bacterial Healthier Hospitals compliant Complies with CAL01351
--------------------	--

Pattern Repeat Size	51cm V
---------------------	--------

Roll Size	137cm x Approx 55m - Available by the lineal metre
-----------	--

Abrasion	100,000 + double rubs Wyzenbeek
----------	---------------------------------

Fire Rating	Tested in accordance with AS1530.3 Spread of Flame Index - 0 Smoke Developed Index - 5
-------------	--

Lead Time	<ul style="list-style-type: none"><li>• 2-weeks (approx.) from Wednesday, subject to stock availability.</li><li>• Additional 1-week for Western Australia.</li><li>• Express delivery is available subject to a surcharge. Contact Baresque for details and pricing.</li></ul>
-----------	---

# CROSSCUT

**Fabrics** » Vinyl and Faux Leather Fabrics

---

## Care Instructions

Most stains and ballpoint pen marks can be removed with a clean dry towel.

Wipe material with a clean, soft cloth dampened with a mild solution of liquid detergent and warm water. Repeat using only clean water, then dry with a lint free cloth.

Avoid using wax polishes, solvents or concentrated abrasives.

For more difficult stains, dampen a soft white cloth with a solution of household bleach (5:1). Rub gently. Rinse with a water dampened cloth to remove bleach concentration.

Always test in an inconspicuous area first. If care instructions don't deliver the expected results, cease cleaning method immediately and contact Baresque for assistance.

---

## Warranty

2-year warranty. Visit [baresque.com.au/warranty](https://baresque.com.au/warranty) for complete details.

---

## Additional Comments

Crosscut should only be stapled. Do not use adhesives on this product as adhesives seeping into the padding will deform the natural shape.

---

# CROSSCUT

Fabrics » Vinyl and Faux Leather Fabrics

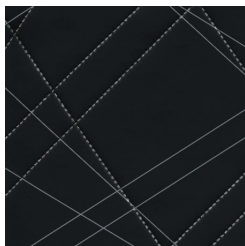
## Colour & Finish Options

### COLOURWAY CARD

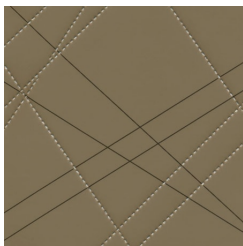
COLOURWAY CARD



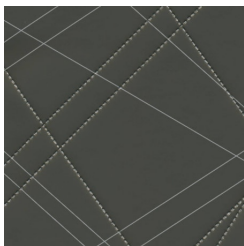
HELIUM



CARBON



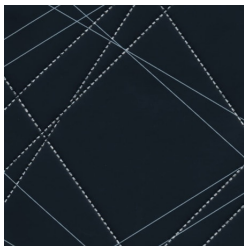
GOLD



GRAPHITE



NICKEL



NITROGEN