

# CHAMOIS

Fabrics » Vinyl and Faux Leather Fabrics



Brand: **United Fabrics**

Applications: **Upholstery**

# CHAMOIS

Fabrics » Vinyl and Faux Leather Fabrics



# CHAMOIS

Fabrics » Vinyl and Faux Leather Fabrics

---

Chamois is a 137cm wide vinyl fabric that's available in 28 colours. Easy to clean with warm water and mild solution of liquid detergent

✓ **Moisture Barrier**

---

**Composition** Vinyl face on a knitted fabric backing

---

**Roll Size** 137cm wide x 27.4m - Available by the lineal metre

---

**Abrasion** 100,000 + double rubs Wyzenbeek

---

**Fire Rating** Tested in accordance with AS1530.3

Spread of Flame Index - 0

Smoke Developed Index - 5

---

**Lead Time**

- 2-weeks (approx.) from Wednesday, subject to stock availability.
  - Additional 1-week for Western Australia.
  - Express delivery is available subject to a surcharge. Contact Baresque for details and pricing.
- 

**Care Instructions**

Use cloth with any of the following in preferred order of use

- \* Clear warm water
- \* Mild solution of liquid detergent and warm water
- \* Isopropyl Alcohol (a.k.a. rubbing alcohol)

Do not use solvent based or concentrated abrasive cleaning agents, lacquer thinners, nail polish remover or cleaning agents containing bleach as these may cause discolouration over a period of time.

Remove any detergent with a clean, damp cloth. Gently pat dry.

Always test in an inconspicuous area first. If care instructions don't deliver the expected results, cease cleaning method immediately and contact Baresque for assistance.

---

**Warranty**

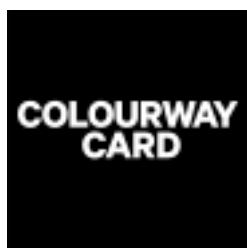
2-year warranty. Visit [baresque.com.au/warranty](https://www.baresque.com.au/warranty) for complete details.

---

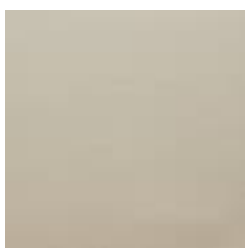
# CHAMOIS

Fabrics » Vinyl and Faux Leather Fabrics

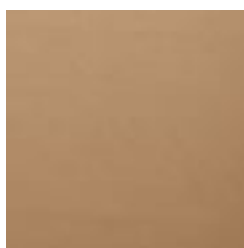
## Colour & Finish Options



COLOURWAY CARD



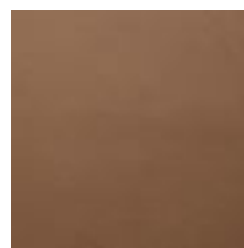
WHI-2117 BONE



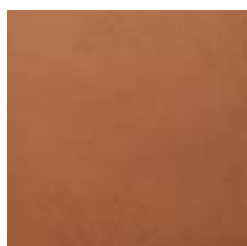
WHI-2118 CAMEL



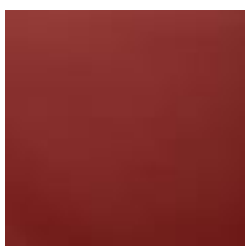
WHI-2120 ANTELOPE



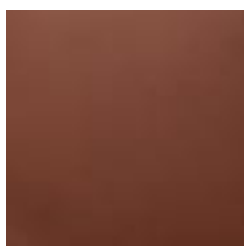
WHI-2121  
CAPPUCCINO



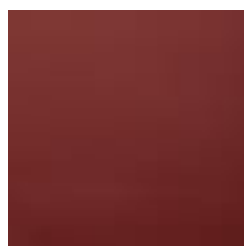
WHI-2123 LUGGAGE



WHI-2124 SALSA



WHI-2125 CINNAMON



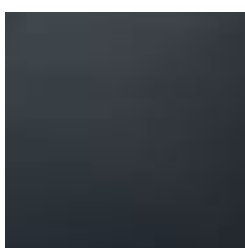
WHI-2126 BORDEAUX



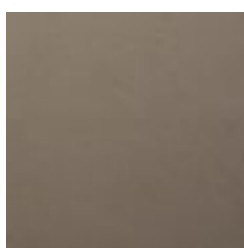
WHI-2134 PATINA



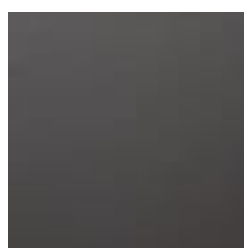
WHI-2136 CERULEAN



WHI-2137 NAVY



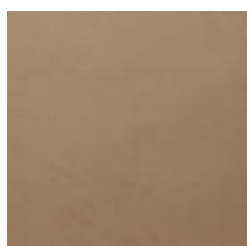
WHI-2138 ELEPHANT



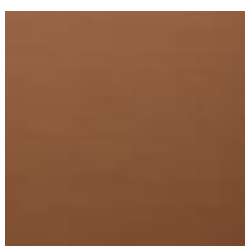
WHI-2139 CHARCOAL



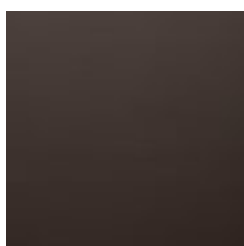
WHI-2140 BLACK



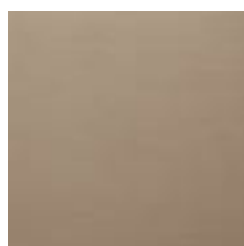
WHI-2141 CASHEW



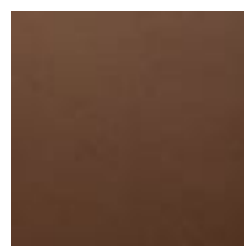
WHI-2142 COGNAC



WHI-2143 ESPRESSO



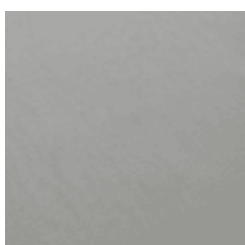
WHI-2150 FAWN



WHI-2152 MAHOGANY



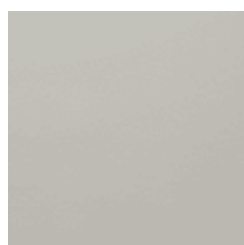
WHI-2153 TRUFFLE



WHI-2154 PEWTER



WHI-2155 STORM



WHI-2157 FOG



WHI-2160  
SASSAFRASS

# CHAMOIS

Fabrics » Vinyl and Faux Leather Fabrics



WHI-2161 MALLARD



WHI-2162 PARADISE



WHI-2163 INDIGO



WHI-2165 MOLTEN



WHI-2170 POWDER



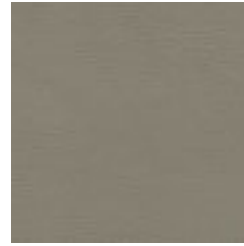
WHI-2171 PEARL



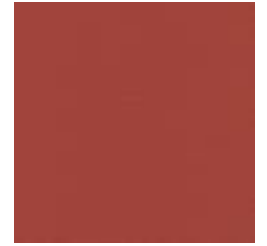
WHI-2172 SAND



WHI-2173 FARRO



WHI-2174 PAVESTONE



WHI-2175  
TERRACOTTA



WHI-2176 BREEZE



WHI-2177 ISLET



WHI-2178 SILVER  
LEAF



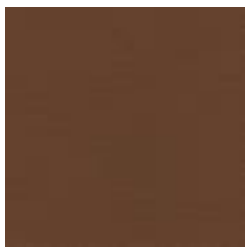
WHI-2179 HERBAL



WHI-2180 EMERALD



WHI-2181 COASTAL



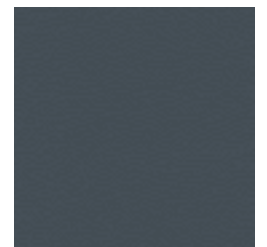
WHI-2182 AUBURN



WHI-2183 SADDLE



WHI-2184 SLATE



WHI-2185 FOSSIL