

# WICKHAM STRIA

Wallcoverings » Commercial Wallcoverings



Brand: **Versa**

Applications: **Walls**

1300 306 399

[info@baresque.com.au](mailto:info@baresque.com.au)

[baresque.com.au](http://baresque.com.au)

1 of 4

# WICKHAM STRIA

Wallcoverings » Commercial Wallcoverings

Wickham Stria is a 137cm wide PVC-free commercial wallcovering with a gracious natural-like texture that's available in 12 colourways.

✓ **Bleach Cleanable**

✓ **Environmentally Friendly**

✓ **Phthalate Free**

✓ **PVC-Free**

Description	Versa's PVC-FREE range offers you the same look, feel and performance as luxury commercial vinyl wallcoverings. Gracious natural-like texture full of charm and personality
-------------	---

Composition	Olefin on a fabric backing 20oz (452 g/m <sup>2</sup> )
-------------	---

Environmental Info	<p>Versa's range of PVC wallcoverings is manufactured from 20% recycled content.</p> <ul style="list-style-type: none"><li>-Free of antimicrobials</li><li>- Phthalate free</li><li>- Heavy metal free</li><li>-Low VOC emitting</li><li>- CA 01350 complaint</li><li>-Free of toxic flame retardants</li><li>- Formaldehyde free</li><li>- BPA Free</li></ul>
--------------------	--

Pattern Repeat Size	45.7cm V / 44.9cm H
---------------------	---------------------

Roll Size	137cm wide x 27.4m - Available by the lineal metre
-----------	--

Fire Rating	<p>Tested in accordance with AS ISO 9705 2003 for the purpose of determining the Group Number classification as required by the Building Code of Australia for the control of fire spread on interior wall and ceiling linings.</p> <p>Classification - Group 3 Specific Extinction - Less than 250m<sup>2</sup>/kg</p>
-------------	---

Lead Time	<ul style="list-style-type: none"><li>• 2-weeks (approx.) from Wednesday, subject to stock availability.</li><li>• Additional 1-week for Western Australia.</li><li>• Express delivery is available subject to a surcharge. Contact Baresque for details and pricing.</li></ul>
-----------	---

# WICKHAM STRIA

Wallcoverings » Commercial Wallcoverings

---

## Suggested Installation

Reverse hang / overlap and double cut.

Baresque recommends and supply Roman brand adhesives and primers.

---

## Care Instructions

Always use a clean, white, soft cloth.

Use cloth with any of the following in preferred order of use:

1: Clear warm water

2: Mild solution of liquid detergent and warm water

3: Isopropyl Alcohol (a.k.a. rubbing alcohol)

Remove any detergent with a clean, damp cloth. Gently pat dry.

For more difficult stains, dampen a soft white cloth with a solution of household bleach (10% bleach / 90% water). Rub gently.

Rinse with a water dampened cloth to remove bleach concentration.

DO NOT USE solvent based or concentrated abrasive cleaning agents, lacquer thinners, nail polish remover as these may cause discolouration over a period of time.

Always test in an inconspicuous area first. If care instructions don't deliver the expected results, cease cleaning method immediately and contact Baresque for assistance.

---

## Warranty

5-year warranty. Visit [baresque.com.au/warranty](https://baresque.com.au/warranty) for complete details.

---

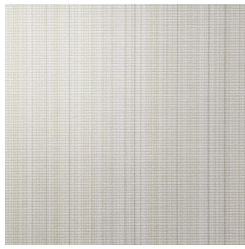
# WICKHAM STRIA

Wallcoverings » Commercial Wallcoverings

## Colour & Finish Options



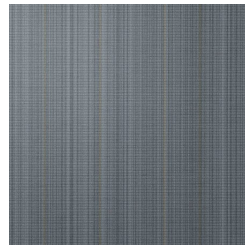
AVF08-002 FIRST  
STAR



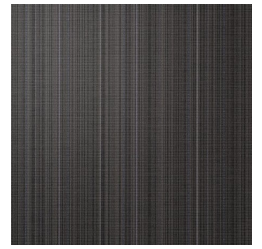
AVF08-010 OLYMPUS



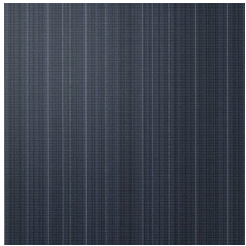
AVF08-201 RECYCLED  
GLASS



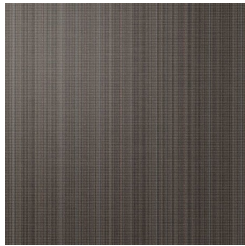
AVF08-312  
LAKESHORE



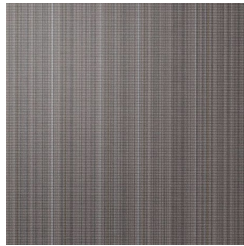
AVF08-320 INKWELL



AVF08-346 INDIGO



AVF08-500 BLACK  
FOX



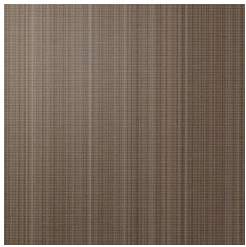
AVF08-521  
SILVERPOINTE



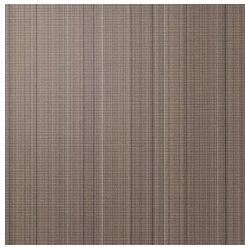
AVF08-566 WILLOW  
TREE



AVF08-811 KEYSTONE



AVF08-822 RELIC



AVF08-861 ON THE  
ROCKS