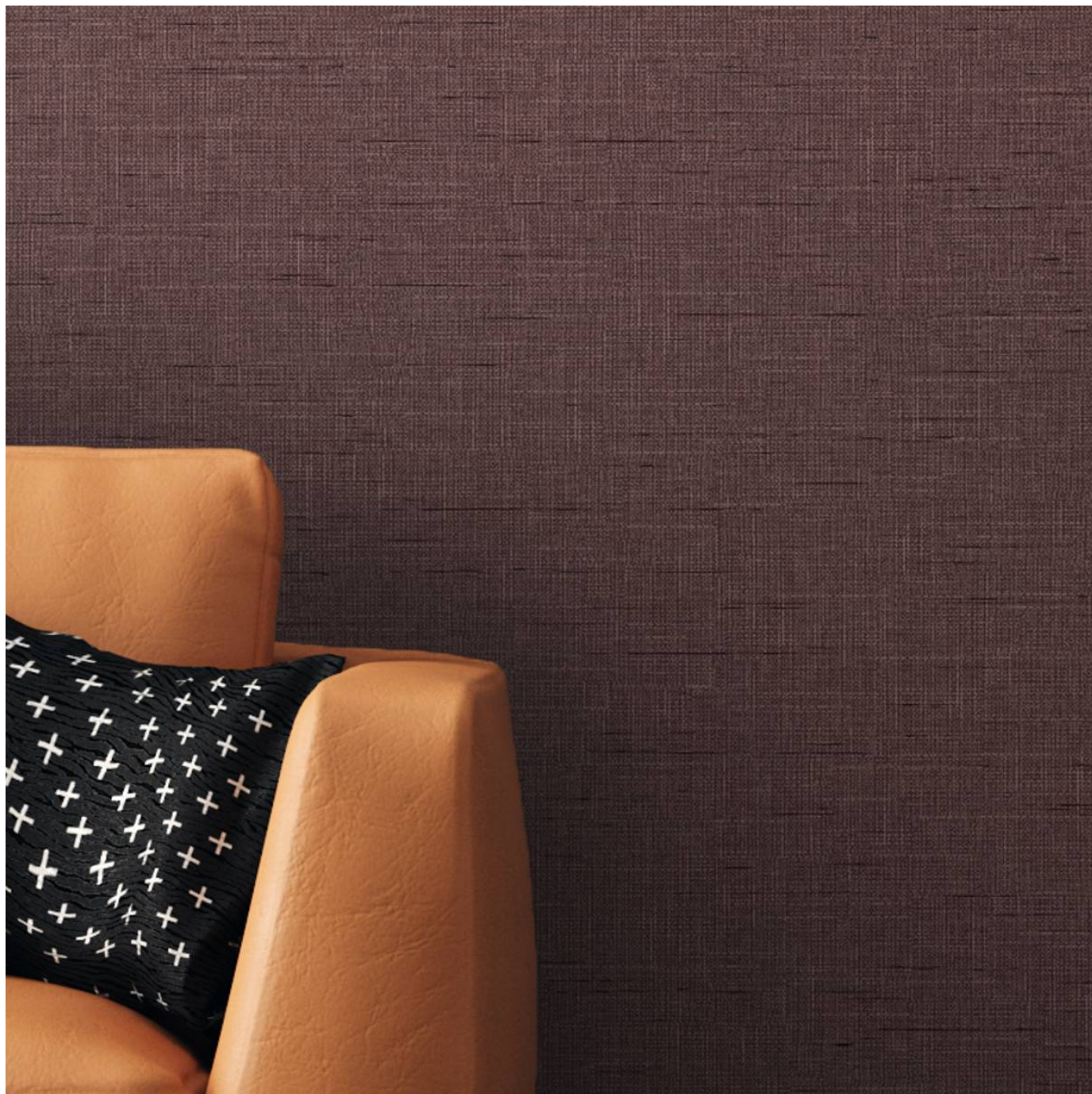


# ELKA TEXTURE

Wallcoverings » Commercial Wallcoverings

---



Brand: **Versa**

Applications: **Walls**

1300 306 399

[info@baresque.com.au](mailto:info@baresque.com.au)

[baresque.com.au](http://baresque.com.au)

1 of 4

# ELKA TEXTURE

Wallcoverings » Commercial Wallcoverings

Elka Texture is a 137cm wide commercial wallcovering with a classic linen print in a wide 17 colour range. PVC and heavy metals free.

✓ Bleach Cleanable

✓ Environmentally Friendly

✓ Phthalate Free

✓ PVC-Free

Description	Versa's PVC-FREE range offers you the same look, feel and performance as luxury commercial vinyl wallcoverings. A classic linen print in wide colour range. Combine with Elka for dramatic effect.
-------------	--

Composition	Olefin on a fabric backing 20oz (452 g/m <sup>2</sup> )
-------------	---

Environmental Info	<p>Versa's range of PVC wallcoverings is manufactured from 20% recycled content.</p> <ul style="list-style-type: none"><li>-Free of antimicrobials</li><li>- Phthalate free</li><li>- Heavy metal free</li><li>-Low VOC emitting</li><li>- CA 01350 complaint</li><li>-Free of toxic flame retardants</li><li>- Formaldehyde free</li><li>- BPA Free</li></ul>
--------------------	--

Pattern Repeat Size	N/A
---------------------	-----

Roll Size	137cm wide x 27.4m - Available by the lineal metre
-----------	--

Fire Rating	<p>Tested in accordance with AS ISO 9705 2003 for the purpose of determining the Group Number classification as required by the Building Code of Australia for the control of fire spread on interior wall and ceiling linings.</p> <p>Classification - Group 3 Specific Extinction - Less than 250m<sup>2</sup>/kg</p>
-------------	---

Lead Time	<ul style="list-style-type: none"><li>• 2-weeks (approx.) from Wednesday, subject to stock availability.</li><li>• Additional 1-week for Western Australia.</li><li>• Express delivery is available subject to a surcharge. Contact Baresque for details and pricing.</li></ul>
-----------	---

# ELKA TEXTURE

Wallcoverings » Commercial Wallcoverings

---

## Suggested Installation

Reverse hang / overlap and double cut.

Baresque recommends and supply Roman brand adhesives and primers.

---

## Care Instructions

Always use a clean, white, soft cloth.

Use cloth with any of the following in preferred order of use:

1: Clear warm water

2: Mild solution of liquid detergent and warm water

3: Isopropyl Alcohol (a.k.a. rubbing alcohol)

Remove any detergent with a clean, damp cloth. Gently pat dry.

For more difficult stains, dampen a soft white cloth with a solution of household bleach (10% bleach / 90% water). Rub gently.

Rinse with a water dampened cloth to remove bleach concentration.

DO NOT USE solvent based or concentrated abrasive cleaning agents, lacquer thinners, nail polish remover as these may cause discolouration over a period of time.

Always test in an inconspicuous area first. If care instructions don't deliver the expected results, cease cleaning method immediately and contact Baresque for assistance.

---

## Warranty

5-year warranty. Visit [baresque.com.au/warranty](https://baresque.com.au/warranty) for complete details.

---

# ELKA TEXTURE

Wallcoverings » Commercial Wallcoverings

## Colour & Finish Options



AVF05-024 TAHOMA



AVF05-053 EVEREST



AVF05-138 SAND  
DOLLAR



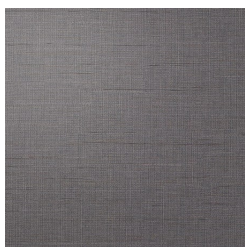
AVF05-163 FARRO



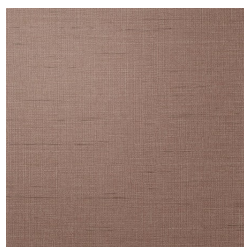
AVF05-256 SAGE



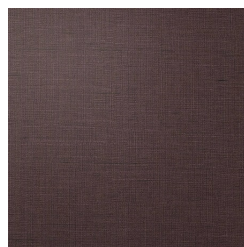
AVF05-374 NAVAL



AVF05-392 CADET



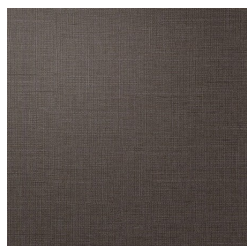
AVF05-470 SUN  
KISSED



AVF05-589 DAMSON



AVF05-616 AUDUBON



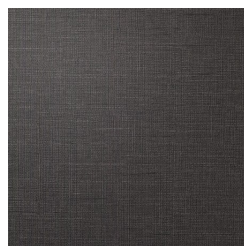
AVF05-648 UMBER



AVF05-705  
GOLDSMITH



AVF05-811 ABERDEEN



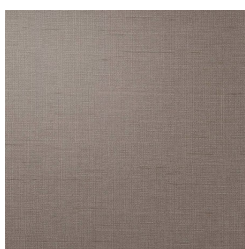
AVF05-820 RAVEN



AVF05-837 SHALE



AVF05-842 FRESH  
WATER



AVF05-851 DURHAM