

# CAPE TOWN

Wallcoverings » Commercial Wallcoverings



Brand: **Versa**

Applications: **Walls**

# CAPE TOWN

Wallcoverings » Commercial Wallcoverings

Cape Town is a 137cm wide wallcovering with a classic herringbone motif that's available in 15 colours. Cleanable with warm water and detergent.

✓ **Bleach Cleanable**

✓ **Environmentally Friendly**

✓ **Phthalate Free**

✓ **PVC-Free**

## Description

Versa's PVC-FREE range offers you the same look, feel and performance as luxury commercial vinyl wallcoverings. Reminiscent of a classic herringbone motif, or chevron, with a stylized twist Cape Town has a unique movement and irregularity. The contemporary colour palette offers a diverse mix that spans clean crisp white and black to deep rich colours.

## Composition

Olefin on a fabric backing 20oz (452 g/m<sup>2</sup>)

## Environmental Info

Versa's range of PVC wallcoverings is manufactured from 20% recycled content.

- Free of antimicrobials
- Phthalate free
- Heavy metal free
- Low VOC emitting
- CA 01350 complaint
- Free of toxic flame retardants
- Formaldehyde free
- BPA Free

## Pattern Repeat Size

45.7cm V / 44.9cm H

## Roll Size

137cm wide x 27.4m - Available by the lineal metre

## Fire Rating

Tested in accordance with AS ISO 9705 2003 for the purpose of determining the Group Number classification as required by the Building Code of Australia for the control of fire spread on interior wall and ceiling linings.

Classification - Group 3  
Specific Extinction - Less than 250m<sup>2</sup>/kg

# CAPE TOWN

Wallcoverings » Commercial Wallcoverings

---

Lead Time	<ul style="list-style-type: none"><li>• 2-weeks (approx.) from Wednesday, subject to stock availability.</li><li>• Additional 1-week for Western Australia.</li><li>• Express delivery is available subject to a surcharge. Contact Baresque for details and pricing.</li></ul>
-----------	---------------------------------------------------------------------------------------------------------------------------------------------------------------------------------------------------------------------------------------------------------------------------------

---

Suggested Installation	<p>Reverse hang / overlap and double cut.</p> <p>Baresque recommends and supply Roman brand adhesives and primers.</p>
------------------------	------------------------------------------------------------------------------------------------------------------------

---

Care Instructions	<p>Always use a clean, white, soft cloth.</p> <p>Use cloth with any of the following in preferred order of use:</p> <ol style="list-style-type: none"><li>1: Clear warm water</li><li>2: Mild solution of liquid detergent and warm water</li><li>3: Isopropyl Alcohol (a.k.a. rubbing alcohol)</li></ol> <p>Remove any detergent with a clean, damp cloth. Gently pat dry.</p> <p>For more difficult stains, dampen a soft white cloth with a solution of household bleach (10% bleach / 90% water). Rub gently.</p> <p>Rinse with a water dampened cloth to remove bleach concentration.</p> <p>DO NOT USE solvent based or concentrated abrasive cleaning agents, lacquer thinners, nail polish remover as these may cause discolouration over a period of time.</p> <p>Always test in an inconspicuous area first. If care instructions don't deliver the expected results, cease cleaning method immediately and contact Baresque for assistance.</p>
-------------------	------------------------------------------------------------------------------------------------------------------------------------------------------------------------------------------------------------------------------------------------------------------------------------------------------------------------------------------------------------------------------------------------------------------------------------------------------------------------------------------------------------------------------------------------------------------------------------------------------------------------------------------------------------------------------------------------------------------------------------------------------------------------------------------------------------------------------------------------------------------------------------------------------------------------------------------------------------

---

Warranty	5-year warranty. Visit <a href="https://baresque.com.au/warranty">baresque.com.au/warranty</a> for complete details.
----------	----------------------------------------------------------------------------------------------------------------------

---



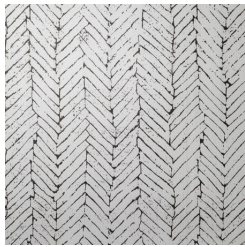
# CAPE TOWN

Wallcoverings » Commercial Wallcoverings

## Colour & Finish Options



AVF02-024 GOOD  
HOPE



AVF02-053 NORTH  
END



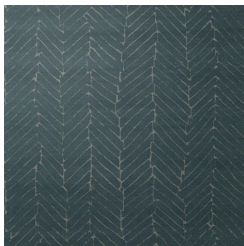
AVF02-125 CLIFTON  
BEACH



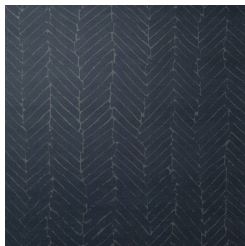
AVF02-134 FENWAY



AVF02-186 SIGNAL  
HILL



AVF02-216  
HELDERBERG



AVF02-351 GORDON'S  
BAY



AVF02-498  
SOMERSET



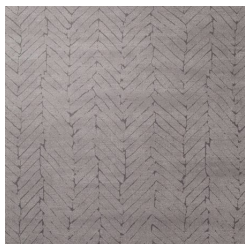
AVF02-502  
CAMBRIDGE



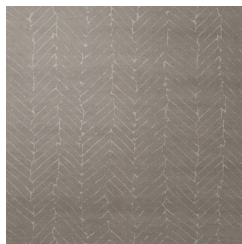
AVF02-508 TABLE  
MOUNTAIN



AVF02-531 CITY BOWL



AVF02-538  
METRORAIL



AVF02-547 ROBBEN  
ISLAND



AVF02-562 PONTE  
CITY



AVF02-579 HILLBROW  
TOWER



AVF02-590 ACORN  
STREET