

DIAMOND LATTICE FUTURE CARVING

Wallcoverings » Decorative Wallcoverings



Brand: **Bi Mei**

Applications: **Walls**

1300 306 399

info@baresque.com.au

baresque.com.au

1 of 4

DIAMOND LATTICE FUTURE CARVING

Wallcoverings » Decorative Wallcoverings

Diamond Lattice is a 89.5cm wide decorative wallcovering with a geometric design in diaper pattern that's available in 6 colourways.

Description	The Future Carving range features 13 new wallcovering designs that will blow your mind with their level of intricacy. Spanning suede, grassweaves and textiles, Future Carving offers a range of unique aesthetics suited to the most discerning environment.
Composition	100% suede on a non-woven backing 400g/m ²
Pattern Repeat Size	6.5cm V / 6.5cm H
Roll Size	Trims to 89.5cm x 10m - Available by the FULL ROLL ONLY
Fire Rating	<p>Tested in accordance with AS ISO 9705 2003 for the purpose of determining the Group Number classification as required by the Building Code of Australia for the control of fire spread on interior wall and ceiling linings.</p> <p>The result achieved was: Classification - Group 2 Specific Extinction - Less than 250m²/kg</p>
Lead Time	<ul style="list-style-type: none">• 2-weeks (approx.) from Wednesday, subject to stock availability.• Additional 1-week for Western Australia.• Express delivery is available subject to a surcharge. Contact Baresque for details and pricing.
Suggested Installation	<p>Non-reverse hang / butt join.</p> <p>If your order contains several numbered rolls of one single item/ reference, please first install the roll with the highest number, and then continue to install the other rolls in sequence, in descending order.</p> <p>Measure and cut 3 strip lengths. Add 5 to 10 cm to top and bottom of each strip.</p> <p>For printed patterns, plan your match from the roll before cutting</p> <p>Mark each strip coming from the roll on the back and hang in the same sequence</p> <p>Reverse alternate lengths when instructed to do so by label on the roll</p>

DIAMOND LATTICE FUTURE CARVING

Wallcoverings » Decorative Wallcoverings

Care Instructions

Always use a clean, white, soft cloth.

Remove liquid stains immediately using a dry cloth. Avoid hard scrubbing.

For tougher stains, dampen the cloth with warm water or a weak dilution of liquid detergent and apply being careful not to soak the material. Always work towards the centre of the stain so as to avoid further spreading.

Remove any detergent with a clean, damp cloth. Gently pat dry.

Always test in an inconspicuous area first.

Warranty

2-year warranty. Visit baresque.com.au/warranty for complete details.

DIAMOND LATTICE FUTURE CARVING

Wallcoverings » Decorative Wallcoverings

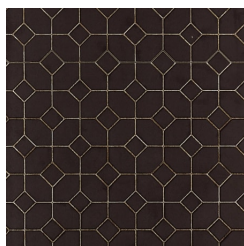
Colour & Finish Options



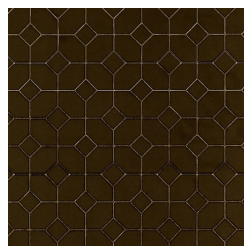
T117TF3512 GRAY
MATTRESS



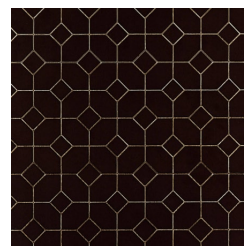
T117TF3513 SHARK



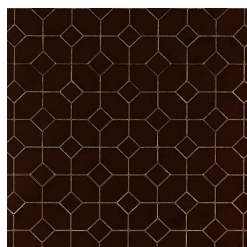
T117TF3514 DEEP
DIANE



T117TF3515 SMOKE



T117TF3516 MATURE



T117TF3517 MUHA
COFFEE