

VIRTUOSO

Wallcoverings » Commercial Wallcoverings



Brand: **Symphony**

Applications: **Walls**

1300 306 399

info@baresque.com.au

baresque.com.au

1 of 5

VIRTUOSO

Wallcoverings » Commercial Wallcoverings

Virtuoso is a 137cm wide commercial wallcovering with a slit texture displayed in 23 colourways. Versatile, durable, easy to clean and cost effective.

✓ Bleach Cleanable

Description	Cascading organic threads create depth and texture
Composition	Vinyl face on a fabric backing Equivalent to 20oz (452 g/m ²)
Environmental Info	<p>Formaldehyde free</p> <p>Heavy metals free</p> <p>Perfluorooctanoic acid free</p> <p>No solvent inks</p> <p>Low VOC emissions. Any VOCs dissipate quickly (faster than paint) through normal ventilation and have no recognized adverse impact on indoor air quality.</p> <p>Durability means products do not need to be replaced regularly due to wear and tear and being cleanable, vinyl products are ideal for helping keep commercial environments clean of bacteria.</p> <p>Baresque will only deal with vinyl manufacturers that comply with applicable state and federal regulations, provide a factory that is safe and clean for its employees to work in, recycle scrap and inks during the manufacturing process to minimize waste related to production.</p>
Pattern Repeat Size	N/A
Roll Size	137cm wide x 27.4m - Available by the lineal metre
Fire Rating	<p>Tested in accordance with AS ISO 9705 2003 for the purpose of determining the Group Number classification as required by the Building Code of Australia for the control of fire spread on interior wall and ceiling linings.</p> <p>The result achieved was: Classification - Group 2 Specific Extinction - Less than 250m²/kg</p>
Lead Time	<ul style="list-style-type: none">• 2-weeks (approx.) from Wednesday, subject to stock availability.• Additional 1-week for Western Australia.• Express delivery is available subject to a surcharge. Contact Baresque for details and pricing.

VIRTUOSO

Wallcoverings » Commercial Wallcoverings

Suggested Installation

Reverse hang / overlap and double cut.

Baresque recommends and supply Roman brand adhesives and primers.

Care Instructions

Use cloth with any of the following in preferred order of use:

1: Clear warm water

2: Mild solution of liquid detergent and warm water

3: Isopropyl Alcohol (a.k.a. rubbing alcohol)

Remove any detergent with a clean, damp cloth. Gently pat dry.

For more difficult stains, dampen a soft white cloth with a solution of household bleach (10% bleach / 90% water). Rub gently.

Rinse with a water dampened cloth to remove bleach concentration.

Do not use solvent based or concentrated abrasive cleaning agents, lacquer thinners or nail polish remover as these may cause discolouration over a period of time.

Always test in an inconspicuous area first.

If care instructions don't deliver the expected results, cease cleaning method immediately and contact Baresque for assistance.

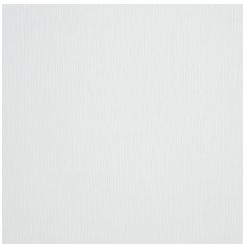
Warranty

5-year warranty. Visit baresque.com.au/warranty for complete details.

Colour & Finish Options

COLOURWAY CARD

COLOURWAY CARD



AZ52250 JESSICA'S
EVEREST



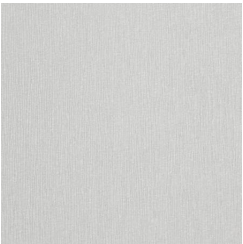
AZ52251 SILVER
LINING



AZ52252 SHEET
METAL



AZ52253 CELINE
BLACK



AZ52254 RHODIUM



AZ52255 MEDFORD
GREY



AZ52256 SATIN BARK



AZ52257 MICA



AZ52258 SHELBY



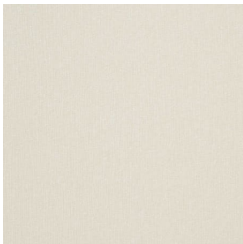
AZ52259 ECO LINEN



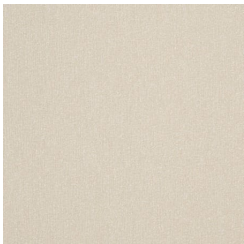
AZ52260 UTOPIA



AZ52261 PINE NEEDLE



AZ52262 ANNETTE
LACE



AZ52263 NANKEEN



AZ52264 GEODE



AZ52265 KONA GOLD



AZ52267 TAJ MAHAL



AZ52268 SALVATION
BRONZE



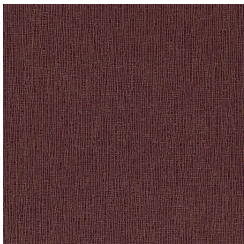
AZ52269 COPPER
WIRE



AZ52895 ICICLE



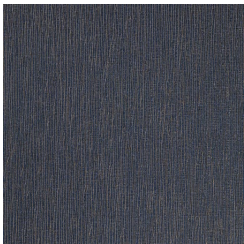
AZ52896 GILDED LILY



AZ52897 GOLDEN



AZ52898 VIRIDIAN



AZ52899 ROYAL

VIRTUOSO

Wallcoverings » Commercial Wallcoverings

PLUM

NAVY

1300 306 399

info@baresque.com.au

baresque.com.au

5 of 5