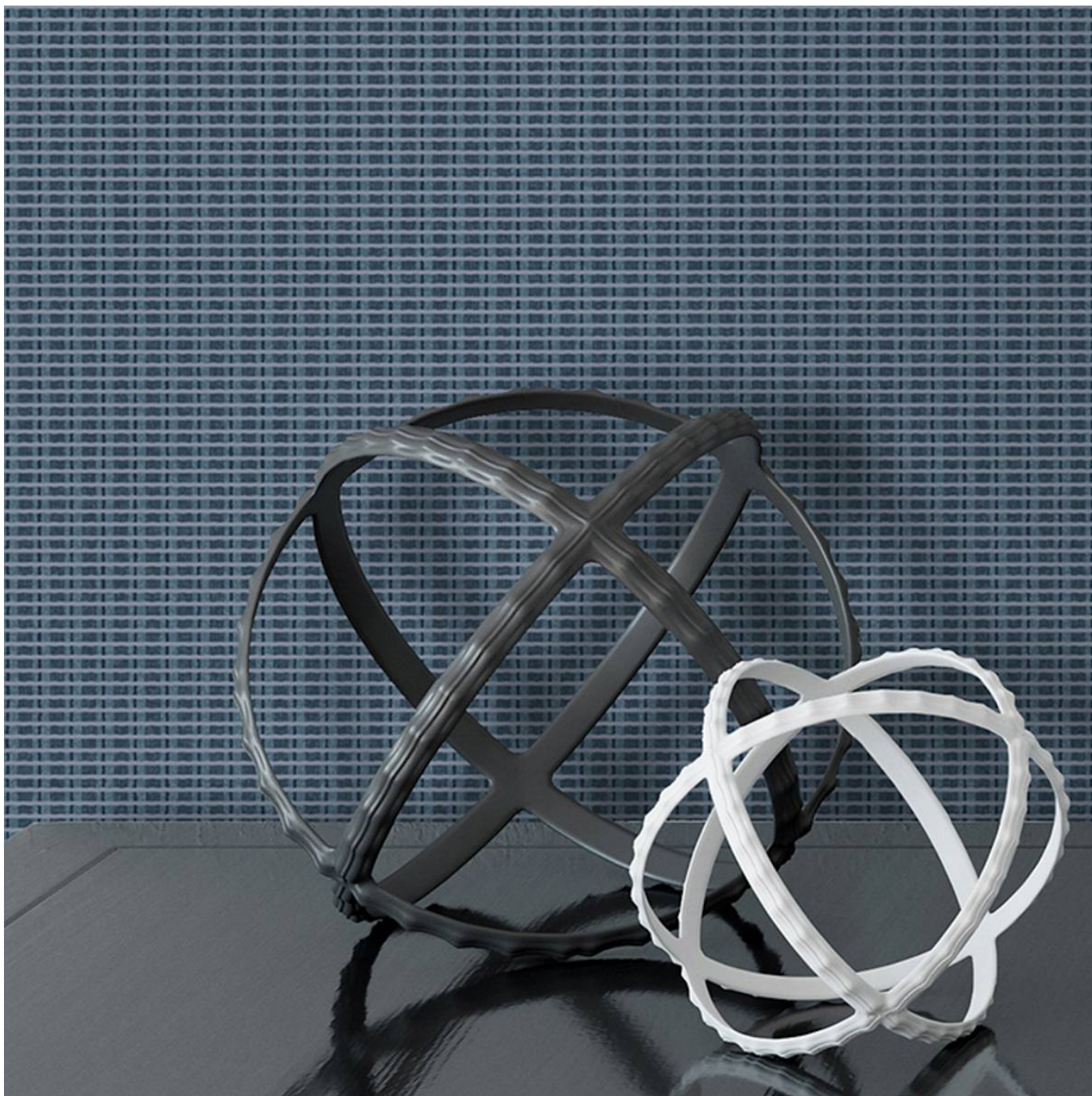


# VIA MONTE

Wallcoverings » Commercial Wallcoverings



Brand: **Versa**

Applications: **Walls**

1300 306 399

[info@baresque.com.au](mailto:info@baresque.com.au)

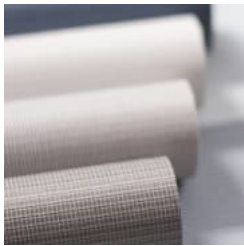
[baresque.com.au](http://baresque.com.au)

1 of 6

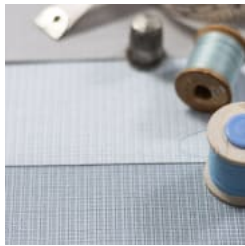
# VIA MONTE

Wallcoverings » Commercial Wallcoverings

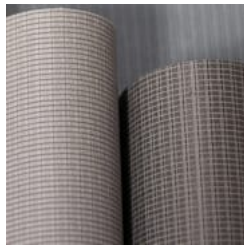
---



via-monte-promo-2.jpg



via-monte-promo-3.jpg



via-monte-promo-4.jpg



via-monte-promo-5.jpg

# VIA MONTE

Wallcoverings » Commercial Wallcoverings

Via Monte is a 137cm wide PVC-free commercial wallcovering reminiscent of pinstripes and tweed fabrics that's available in 24 colourways.

✓ Bleach Cleanable

✓ Environmentally Friendly

✓ Phthalate Free

✓ PVC-Free

Description	Via Monte is a tailored, small scale weave with a nod to menswear. Reminiscent of pinstripes and tweed fabrics, this 24-color palette offers a modern choice that is always in style. PVC-free wallcoverings provide specifiers choice in material without compromising the quality and durability of the product and delivers the same look, feel, and performance of luxury vinyl wallcovering. Features + Benefits * Bleach cleanable * Colourways * PVC-Free * Low VOC
-------------	--

Composition	Olefin on a fabric backing 20oz (452 g/m <sup>2</sup> )
-------------	---

Environmental Info	<p>Versa's range of PVC wallcoverings is manufactured from 20% recycled content.</p> <ul style="list-style-type: none"><li>-Free of antimicrobials</li><li>- Phthalate free</li><li>- Heavy metal free</li><li>-Low VOC emitting</li><li>- CA 01350 complaint</li><li>-Free of toxic flame retardants</li><li>- Formaldehyde free</li><li>- BPA Free</li></ul>
--------------------	--

Pattern Repeat Size	N/A
---------------------	-----

Roll Size	137cm wide x 27.4m - Available by the lineal metre
-----------	--

Fire Rating	<p>Tested in accordance with AS ISO 9705 2003 for the purpose of determining the Group Number classification as required by the Building Code of Australia for the control of fire spread on interior wall and ceiling linings.</p> <p>Classification - Group 3 Specific Extinction - Less than 250m<sup>2</sup>/kg</p>
-------------	---

# VIA MONTE

Wallcoverings » Commercial Wallcoverings

---

Lead Time	<ul style="list-style-type: none"><li>• 2-weeks (approx.) from Wednesday, subject to stock availability.</li><li>• Additional 1-week for Western Australia.</li><li>• Express delivery is available subject to a surcharge. Contact Baresque for details and pricing.</li></ul>
-----------	---

---

Suggested Installation	<p>Reverse hang / overlap and double cut.</p> <p>Baresque recommends and supply Roman brand adhesives and primers.</p>
------------------------	--

---

Care Instructions	<p>Always use a clean, white, soft cloth.</p> <p>Use cloth with any of the following in preferred order of use:</p> <ol style="list-style-type: none"><li>1: Clear warm water</li><li>2: Mild solution of liquid detergent and warm water</li><li>3: Isopropyl Alcohol (a.k.a. rubbing alcohol)</li></ol> <p>Remove any detergent with a clean, damp cloth. Gently pat dry.</p> <p>For more difficult stains, dampen a soft white cloth with a solution of household bleach (10% bleach / 90% water). Rub gently.</p> <p>Rinse with a water dampened cloth to remove bleach concentration.</p> <p>DO NOT USE solvent based or concentrated abrasive cleaning agents, lacquer thinners, nail polish remover as these may cause discolouration over a period of time.</p> <p>Always test in an inconspicuous area first. If care instructions don't deliver the expected results, cease cleaning method immediately and contact Baresque for assistance.</p>
-------------------	--

---

Warranty	5-year warranty. Visit <a href="https://baresque.com.au/warranty">baresque.com.au/warranty</a> for complete details.
----------	--

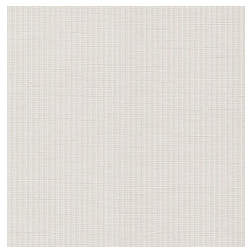
---



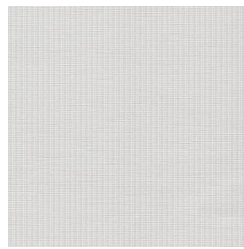
## Colour & Finish Options

### COLOURWAY CARD

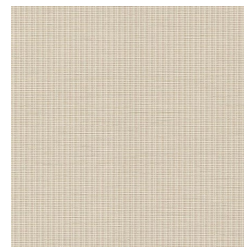
COLOURWAY CARD



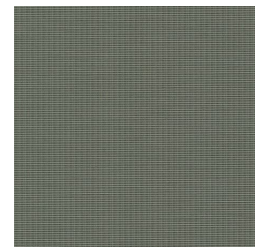
AVF17-067 GLISS



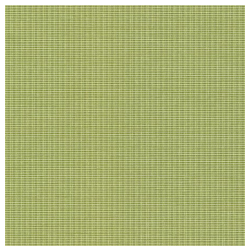
AVF17-091 DIAMOND



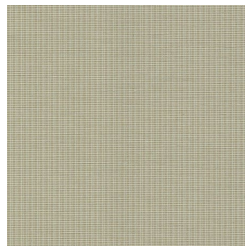
AVF17-113 WISP



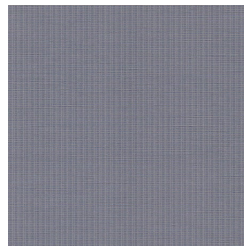
AVF17-218 RAVINE



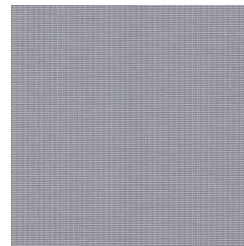
AVF17-262 AURORA



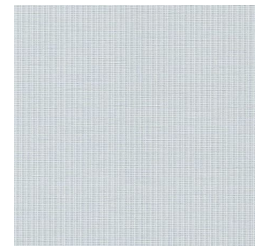
AVF17-295 ELECTRUM



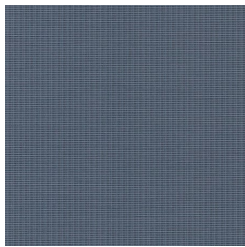
AVF17-309 VISION



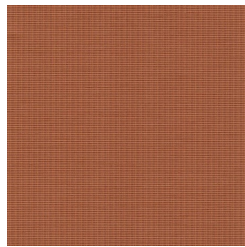
AVF17-327 CREST



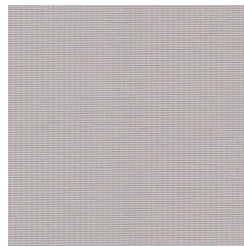
AVF17-348 AETHER



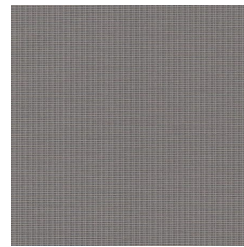
AVF17-365 ADMIRAL



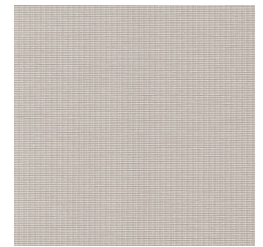
AVF17-455 CANYON



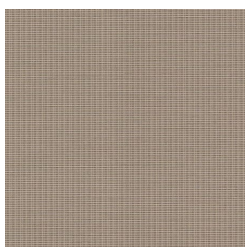
AVF17-504  
MOONDUST



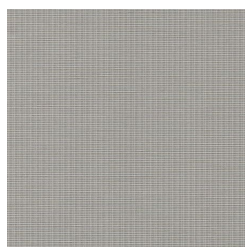
AVF17-511 ALLOY



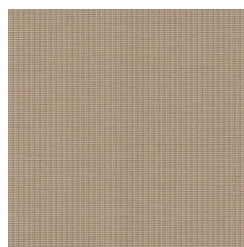
AVF17-523 STATUE



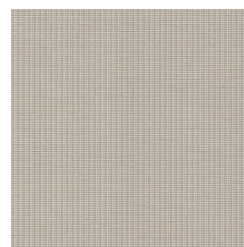
AVF17-530 CIRCLET



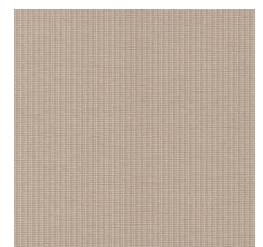
AVF17-558 PRECIPICE



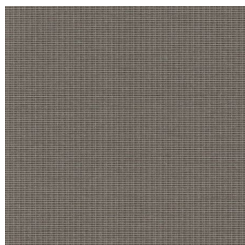
AVF17-567 DUNE



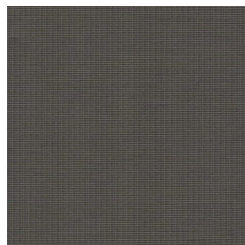
AVF17-570 BRUME



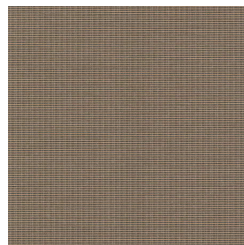
AVF17-586 SPIRE



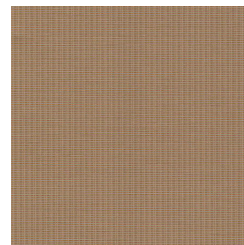
AVF17-593 CAVERN



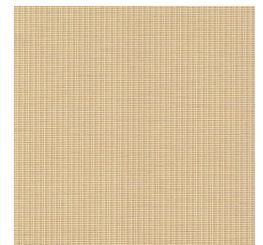
AVF17-599 GUARDIAN



AVF17-641 CATS EYE



AVF17-679 SCOTCH

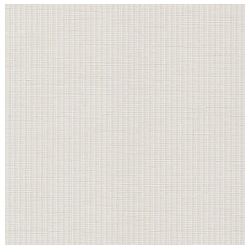


AVF17-772 HALOGEN

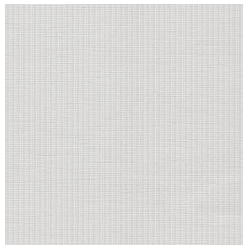


# VIA MONTE

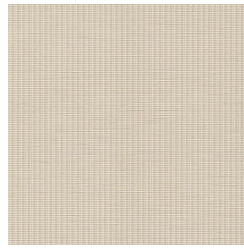
Wallcoverings » Commercial Wallcoverings



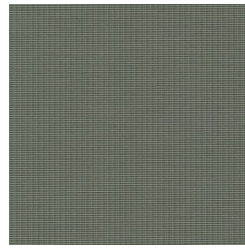
AVF17-067 GLISS



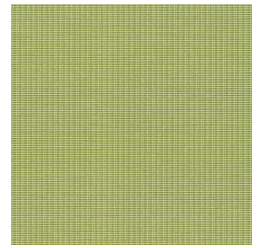
AVF17-091 DIAMOND



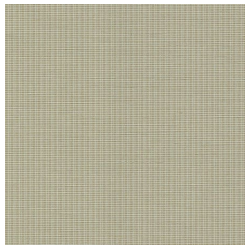
AVF17-113 WISP



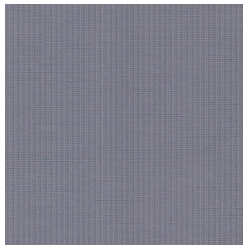
AVF17-218 RAVINE



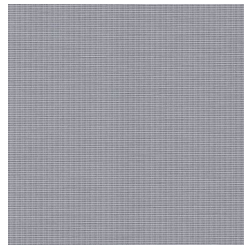
AVF17-262 AURORA



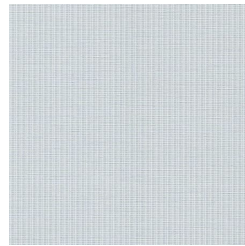
AVF17-295 ELECTRUM



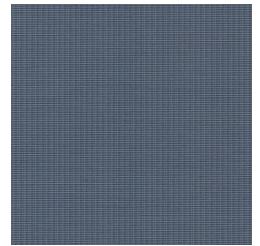
AVF17-309 VISION



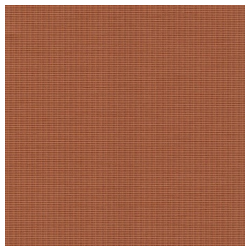
AVF17-327 CREST



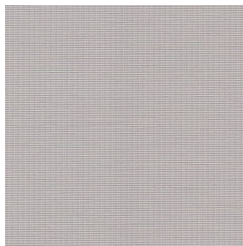
AVF17-348 AETHER



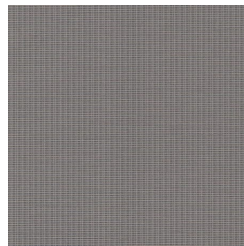
AVF17-365 ADMIRAL



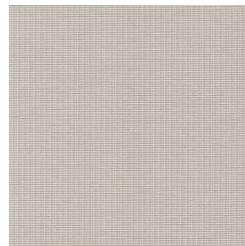
AVF17-455 CANYON



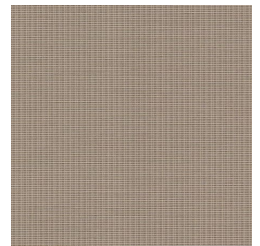
AVF17-504  
MOONDUST



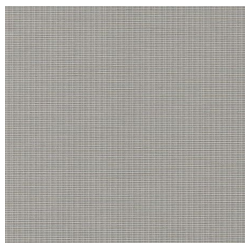
AVF17-511 ALLOY



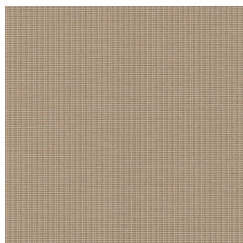
AVF17-523 STATUE



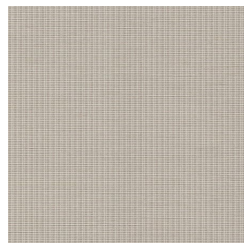
AVF17-530 CIRCLET



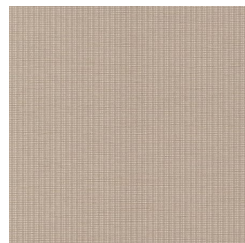
AVF17-558 PRECIPICE



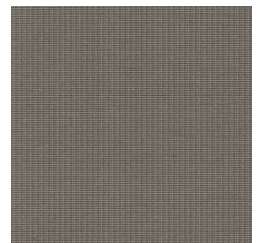
AVF17-567 DUNE



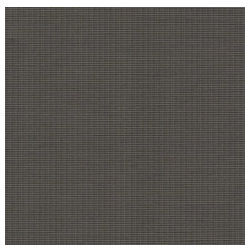
AVF17-570 BRUME



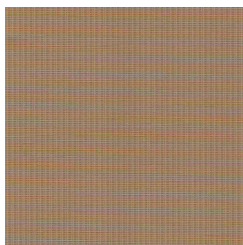
AVF17-586 SPIRE



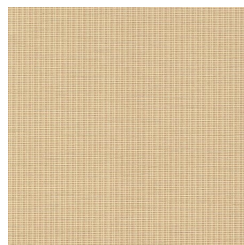
AVF17-593 CAVERN



AVF17-599 GUARDIAN



AVF17-679 SCOTCH



AVF17-772 HALOGEN