

TIKI

Wallcoverings » Commercial Wallcoverings



Brand: **Symphony**

Applications: **Walls**

1300 306 399

info@baresque.com.au

baresque.com.au

1 of 5

TIKI

Wallcoverings » Commercial Wallcoverings

137cm wide commercial wallcovering with a multi-colour woven texture pattern that's available in 14 colourways. Easy to clean, durable and versatile.

✓ **Bleach Cleanable**

Description	With its striped companion, Tiki mimics tall grasses in tropical climates with a refined multi-colour, woven texture pattern. Captivate your vacation spirit with 24 colours that can go anywhere, and coordinate with Tiki Stripe.
Composition	Vinyl face on a fabric backing Equivalent to 20oz (452g/m ²)
Environmental Info	<p>Formaldehyde free</p> <p>Heavy metals free</p> <p>Perfluorooctanoic acid free</p> <p>No solvent inks</p> <p>Low VOC emissions. Any VOCs dissipate quickly (faster than paint) through normal ventilation and have no recognized adverse impact on indoor air quality.</p> <p>Durability means products do not need to be replaced regularly due to wear and tear and being cleanable, vinyl products are ideal for helping keep commercial environments clean of bacteria.</p> <p>Baresque will only deal with vinyl manufacturers that comply with applicable state and federal regulations, provide a factory that is safe and clean for its employees to work in, recycle scrap and inks during the manufacturing process to minimize waste related to production.</p>
Pattern Repeat Size	N/A
Roll Size	137cm wide x 27.4m - Available by the lineal metre
Fire Rating	<p>Tested in accordance with AS ISO 9705 2003 for the purpose of determining the Group Number classification as required by the Building Code of Australia for the control of fire spread on interior wall and ceiling linings.</p> <p>The result achieved was: Classification - Group 2 Specific Extinction - Less than 250m²/kg</p>

TIKI

Wallcoverings » Commercial Wallcoverings

Lead Time

- 2-weeks (approx.) from Wednesday, subject to stock availability.
 - Additional 1-week for Western Australia.
 - Express delivery is available subject to a surcharge. Contact Baresque for details and pricing.
-

Suggested Installation

Reverse hang / overlap and double cut.
Baresque recommends and supply Roman brand adhesives and primers.

Care Instructions

Use cloth with any of the following in preferred order of use:

- 1: Clear warm water
- 2: Mild solution of liquid detergent and warm water
- 3: Isopropyl Alcohol (a.k.a. rubbing alcohol)

Remove any detergent with a clean, damp cloth. Gently pat dry.

For more difficult stains, dampen a soft white cloth with a solution of household bleach (10% bleach / 90% water). Rub gently.

Rinse with a water dampened cloth to remove bleach concentration.

Do not use solvent based or concentrated abrasive cleaning agents, lacquer thinners or nail polish remover as these may cause discolouration over a period of time.

Always test in an inconspicuous area first.

If care instructions don't deliver the expected results, cease cleaning method immediately and contact Baresque for assistance.

Warranty

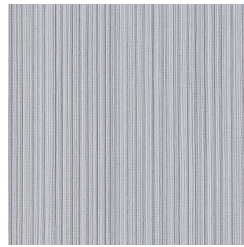
5-year warranty. Visit [baresque.com.au/warranty](https://www.baresque.com.au/warranty) for complete details.

Colour & Finish Options

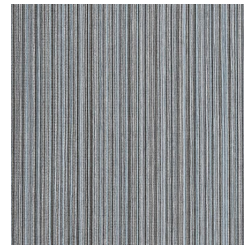
COLOURWAY CARD



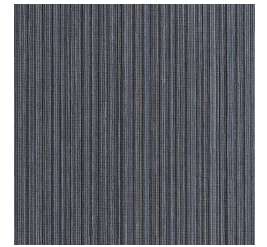
AZ53360 COCONUT



AZ53361 TIDE



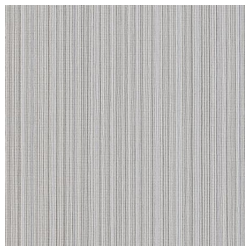
AZ53362 DEEP
OCEAN



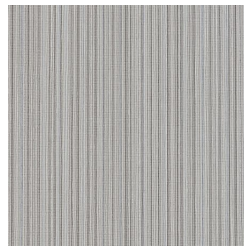
AZ53363 MARINA



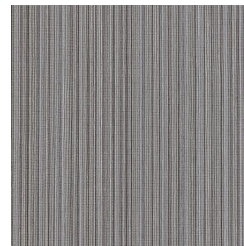
AZ53364 OYSTER



AZ53365 SALTWATER



AZ53366 DOLPHIN
GREY



AZ53367 SHARK FIN



AZ53368 PEBBLE



AZ53369 CLAM
SHELL



AZ53370 JETTY



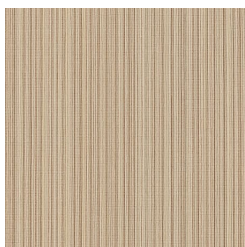
AZ53371 BARNACLE



AZ53372 SANDBAR



AZ53373 STARFISH



AZ53374 KELP



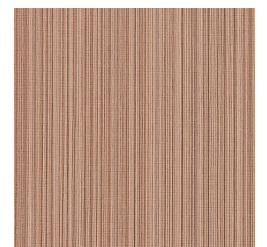
AZ53375 SEAGRASS



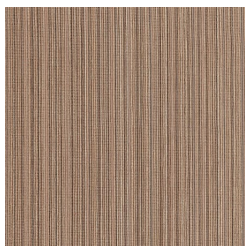
AZ53376 TANNED



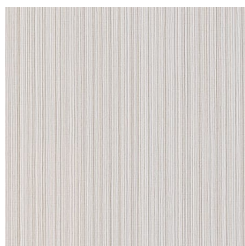
AZ53377 OFFSHORE



AZ53378 PAPAYA



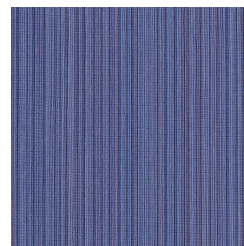
AZ53379 DRIFTWOOD



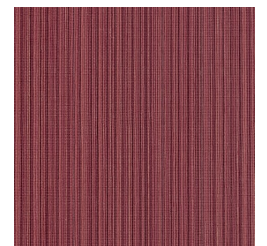
AZ53380 CONCH



AZ53381 LILAC LUAU



AZ53382 COBALT
CABANA



AZ53383 HIBISCUS

TIKI

Wallcoverings » Commercial Wallcoverings
