

STROBE

Wallcoverings » Commercial Wallcoverings



Brand: **Bolta**

STROBE

Wallcoverings » Commercial Wallcoverings

COLOURWAY CARD

COLOURWAY CARD



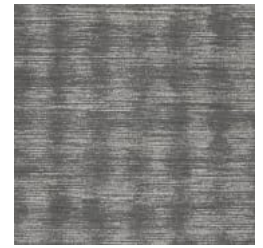
BB-RB-01 WHITE
LIGHTS



BB-RB-02 FADED
FLASH



BB-RB-03 CLOUDY
CLUB



BB-RB-04
ELECTRONIC
EVENING



BB-RB-05 PALE
PULSE



BB-RB-06 BEIGE
BOOGIE



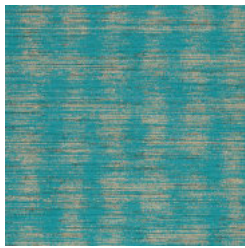
BB-RB-08 DARK
DISCO



BB-RB-10 TECHNO
TAN



BB-RB-12 MULBERRY
MADNESS



BB-RB-13 TEAL
TWIST

STROBE

Wallcoverings » Commercial Wallcoverings

Strobe is a 137cm wide commercial wallcovering with a mid-scale pattern in a subdued option design that's available in 10 colourways.

✓ **Bleach Cleanable**

Description	A subdued optical design is featured in this mid-scale pattern. In the limelight 10 hues featuring metallic spheres that don't miss a beat.
Roll Size	137cm wide x 27.4m - Available by the lineal metre
Composition	Vinyl face on a fabric backing Equivalent to 20oz (452 g/m ²)
Pattern Repeat Size	N/A
Environmental Info	<p>Formaldehyde free</p> <p>Heavy metals free</p> <p>Perfluorooctanoic acid free</p> <p>No solvent inks</p> <p>Low VOC emissions. Any VOCs dissipate quickly (faster than paint) through normal ventilation and have no recognized adverse impact on indoor air quality.</p> <p>Durability means products do not need to be replaced regularly due to wear and tear and being cleanable, vinyl products are ideal for helping keep commercial environments clean of bacteria.</p> <p>Baresque will only deal with vinyl manufacturers that comply with applicable state and federal regulations, provide a factory that is safe and clean for its employees to work in, recycle scrap and inks during the manufacturing process to minimize waste related to production.</p>
Fire Rating	<p>Tested in accordance with AS ISO 9705 2003 for the purpose of determining the Group Number classification as required by the Building Code of Australia for the control of fire spread on interior wall and ceiling linings.</p> <p>The result achieved was: Classification - Group 2 Specific Extinction - Less than 250m²/kg</p>
Warranty	5-year warranty. Visit baresque.com.au/warranty for complete details.

STROBE

Wallcoverings » Commercial Wallcoverings

Lead Time

- 2-weeks (approx.) from Wednesday, subject to stock availability.
 - Additional 1-week for Western Australia.
 - Express delivery is available subject to a surcharge. Contact Baresque for details and pricing.
-

Suggested Installation

Reverse hang / overlap and double cut.
Baresque recommends and supply Roman brand adhesives and primers.

Care Instructions

Use cloth with any of the following in preferred order of use:

- 1: Clear warm water
- 2: Mild solution of liquid detergent and warm water
- 3: Isopropyl Alcohol (a.k.a. rubbing alcohol)

Remove any detergent with a clean, damp cloth. Gently pat dry.

For more difficult stains, dampen a soft white cloth with a solution of household bleach (10% bleach / 90% water). Rub gently.

Rinse with a water dampened cloth to remove bleach concentration.

Do not use solvent based or concentrated abrasive cleaning agents, lacquer thinners or nail polish remover as these may cause discolouration over a period of time.

Always test in an inconspicuous area first.

If care instructions don't deliver the expected results, cease cleaning method immediately and contact Baresque for assistance.

STROBE

Wallcoverings » Commercial Wallcoverings

Colour & Finish Options