

# SHADOW SILK

Wallcoverings » Commercial Wallcoverings



Brand: **Genon**

Applications: **Walls**

# SHADOW SILK

Wallcoverings » Commercial Wallcoverings

Shadow Silk is a 137cm wide commercial wallcovering with horizontal colours in a refined woven look that's available in 26 colourways.

✓ **Bleach Cleanable**

**Description**                      Accenting horizontal colours craft a decorative yet refined woven look in Shadow Silk. Across 26 colourways, these organic banded hues create a dramatic silk that coordinates back with Shadow Leaves.

**Composition**                      Vinyl face on a fabric backing Equivalent to 20oz (452g/m<sup>2</sup>)

**Environmental Info**              Formaldehyde free  
Heavy metals free  
Perfluorooctanoic acid free  
No solvent inks  
Low VOC emissions. Any VOCs dissipate quickly (faster than paint) through normal ventilation and have no recognized adverse impact on indoor air quality.  
Durability means products do not need to be replaced regularly due to wear and tear and being cleanable, vinyl products are ideal for helping keep commercial environments clean of bacteria.  
Baresque will only deal with vinyl manufacturers that comply with applicable state and federal regulations, provide a factory that is safe and clean for its employees to work in, recycle scrap and inks during the manufacturing process to minimize waste related to production.

**Pattern Repeat Size**              N/A

**Roll Size**                              137cm wide x 27.4m - Available by the lineal metre

**Fire Rating**                         Tested in accordance with AS ISO 9705 2003 for the purpose of determining the Group Number classification as required by the Building Code of Australia for the control of fire spread on interior wall and ceiling linings.  
The result achieved was:  
Classification - Group 2  
Specific Extinction - Less than 250m<sup>2</sup>/kg

# SHADOW SILK

Wallcoverings » Commercial Wallcoverings

---

**Lead Time**

- 2-weeks (approx.) from Wednesday, subject to stock availability.
- Additional 1-week for Western Australia.
- Express delivery is available subject to a surcharge. Contact Baresque for details and pricing.

---

**Suggested Installation**

Non reverse hang/overlap double cut.

Baresque recommends and supplies Roman brand adhesives and primers.

---

**Care Instructions**

Use cloth with any of the following in preferred order of use:

- 1: Clear warm water
- 2: Mild solution of liquid detergent and warm water
- 3: Isopropyl Alcohol (a.k.a. rubbing alcohol)

Remove any detergent with a clean, damp cloth. Gently pat dry.

For more difficult stains, dampen a soft white cloth with a solution of household bleach (10% bleach / 90% water). Rub gently.

Rinse with a water dampened cloth to remove bleach concentration.

Do not use solvent based or concentrated abrasive cleaning agents, lacquer thinners or nail polish remover as these may cause discolouration over a period of time.

Always test in an inconspicuous area first.

If care instructions don't deliver the expected results, cease cleaning method immediately and contact Baresque for assistance.

---

**Warranty**

5-year warranty. Visit [baresque.com.au/warranty](https://www.baresque.com.au/warranty) for complete details.

---

# SHADOW SILK

Wallcoverings » Commercial Wallcoverings

## Colour & Finish Options



W2-SW-01 PALMETTO



W2-SW-02 DOGWOOD



W2-SW-03 BLOOM



W2-SW-04 RAPTURE



W2-SW-05 BLEACHED SAND



W2-SW-06 GILT



W2-SW-07 TOASTY MAPLE



W2-SW-08 BONE



W2-SW-09 TENDER TAUPE



W2-SW-10 MOCHA



W2-SW-11 SEA SALT



W2-SW-12 GOLDEN GREY



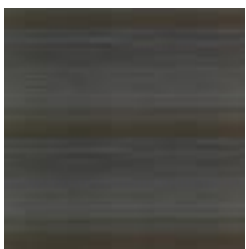
W2-SW-13 VINTAGE BRASS



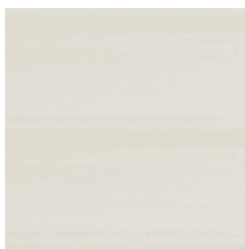
W2-SW-14 ETHEREAL



W2-SW-15 FRENCH GREY



W2-SW-16 BLACK PEARL



W2-SW-17 SNOW



W2-SW-18 FOG



W2-SW-19 INDIGO MADRAS



W2-SW-20 GREY VAPOR



W2-SW-21 HYACINTH



W2-SW-22 COBALT



W2-SW-23 SUMMER



W2-SW-24 PEACOCK



W2-SW-25 EMERALD

1300 306 399

info@baresque.com.au

**baresque.com.au**

# SHADOW SILK

Wallcoverings » Commercial Wallcoverings

---

RAIN

ISLE