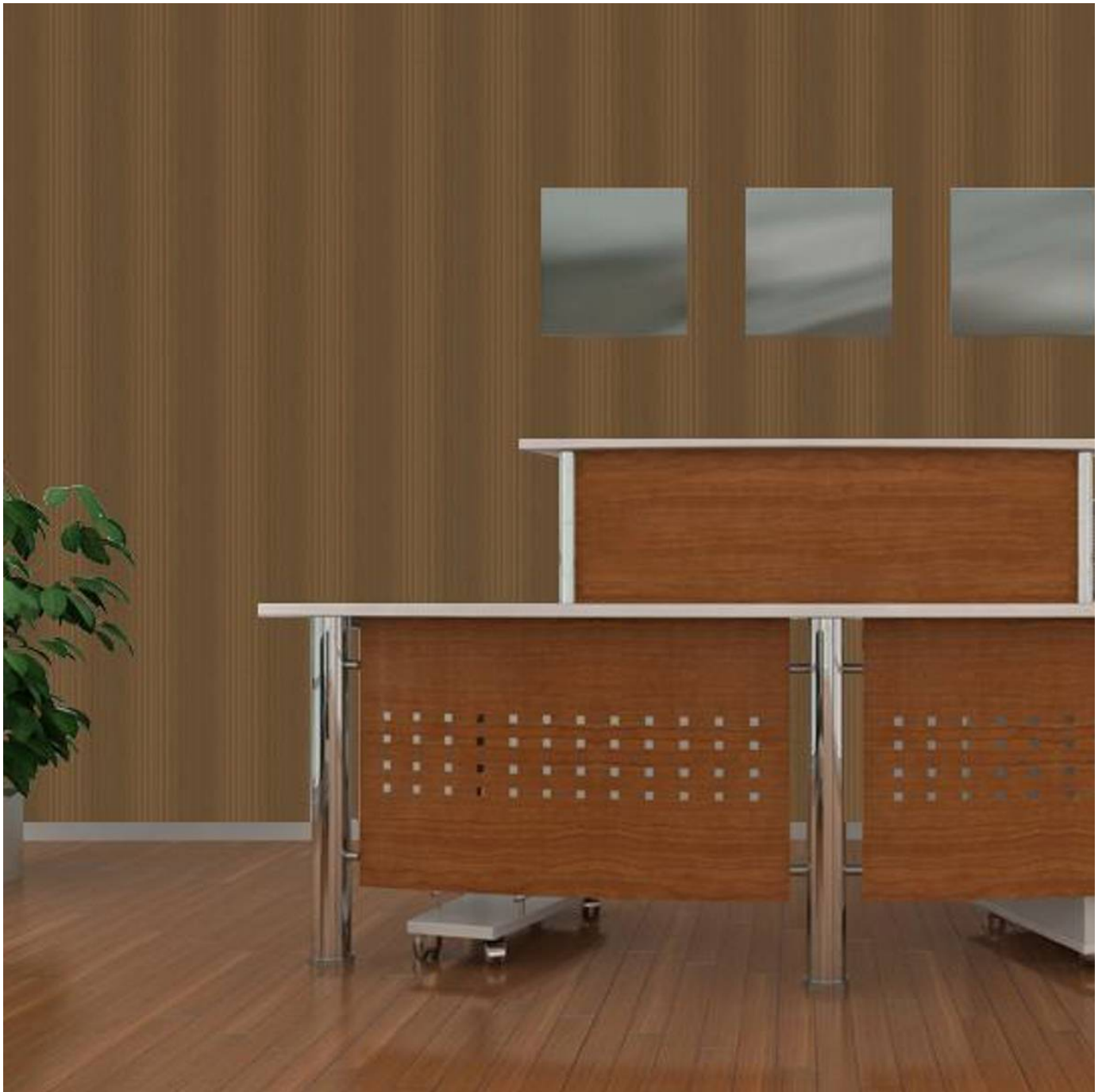


RIPPLE

Wallcoverings » Commercial Wallcoverings



Brand: **Koroseal**

Applications: **Walls**

1300 306 399

info@baresque.com.au

baresque.com.au

1 of 5

RIPPLE

Wallcoverings » Commercial Wallcoverings



baresque-ripple-
promo-1.jpg

RIPPLE

Wallcoverings » Commercial Wallcoverings

Ripples is a 137cm wide commercial wallcovering with a pinstripe pattern that's available in 18 colourways.

✓ Bleach Cleanable

Description	Taking inspiration from nature Ripple mimics the repeating waves of a stone dropped into water.
Composition	Vinyl face on a non-woven backing Equivalent to 20oz (452 g/m ²)
Environmental Info	<p>Formaldehyde free</p> <p>Heavy metals free</p> <p>Perfluorooctanoic acid free</p> <p>No solvent inks</p> <p>Low VOC emissions. Any VOCs dissipate quickly (faster than paint) through normal ventilation and have no recognized adverse impact on indoor air quality.</p> <p>Durability means products do not need to be replaced regularly due to wear and tear and being cleanable, vinyl products are ideal for helping keep commercial environments clean of bacteria.</p> <p>Baresque will only deal with vinyl manufacturers that comply with applicable state and federal regulations, provide a factory that is safe and clean for its employees to work in, recycle scrap and inks during the manufacturing process to minimize waste related to production.</p>
Pattern Repeat Size	130cm H
Roll Size	137cm wide x 27.4m - Available by the lineal metre
Fire Rating	<p>Tested in accordance with AS ISO 9705 2003 for the purpose of determining the Group Number classification as required by the Building Code of Australia for the control of fire spread on interior wall and ceiling linings.</p> <p>The result achieved was: Classification - Group 2 Specific Extinction - Less than 250m²/kg</p>
Lead Time	<ul style="list-style-type: none">• 2-weeks (approx.) from Wednesday, subject to stock availability.• Additional 1-week for Western Australia.• Express delivery is available subject to a surcharge. Contact Baresque for details and pricing.

RIPPLE

Wallcoverings » Commercial Wallcoverings

Suggested Installation

Reverse hang / overlap and double cut.

Baresque recommends and supply Roman brand adhesives and primers.

Care Instructions

Use cloth with any of the following in preferred order of use:

1: Clear warm water

2: Mild solution of liquid detergent and warm water

3: Isopropyl Alcohol (a.k.a. rubbing alcohol)

Remove any detergent with a clean, damp cloth. Gently pat dry.

For more difficult stains, dampen a soft white cloth with a solution of household bleach (10% bleach / 90% water). Rub gently.

Rinse with a water dampened cloth to remove bleach concentration.

Do not use solvent based or concentrated abrasive cleaning agents, lacquer thinners or nail polish remover as these may cause discolouration over a period of time.

Always test in an inconspicuous area first.

If care instructions don't deliver the expected results, cease cleaning method immediately and contact Baresque for assistance.

Warranty

5-year warranty. Visit baresque.com.au/warranty for complete details.

Additional Comments

Colours 65, 45, 82, 62, 90, 59, 91, 77 should only be cleaned with mild ingredients such as soap, detergent and water. Stronger, more alkaline household cleaners have the potential to damage the surface of the material along with excessive scrubbing.

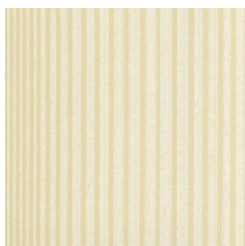
RIPPLE

Wallcoverings » Commercial Wallcoverings

Colour & Finish Options



1221-19 QUIVER



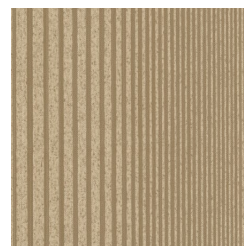
1221-22 BOUNCE



1221-24 MEASURE



1221-38 QUAKE



1221-41 METER



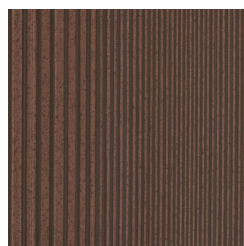
1221-45 BEAT



1221-56 SHAKE



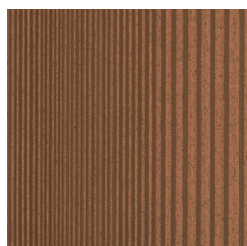
1221-59 THROB



1221-62 IMPULSE



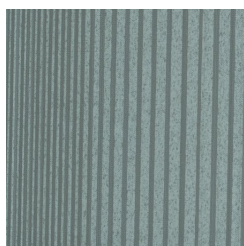
1221-64 PULSE



1221-65 ACCENT



1221-70 CADENCE



1221-71 RHYTHM



1221-77 VIBRATION



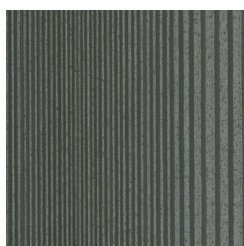
1221-80 PITCH



1221-82 FORCE



1221-90 POUND



1221-91 THUMP