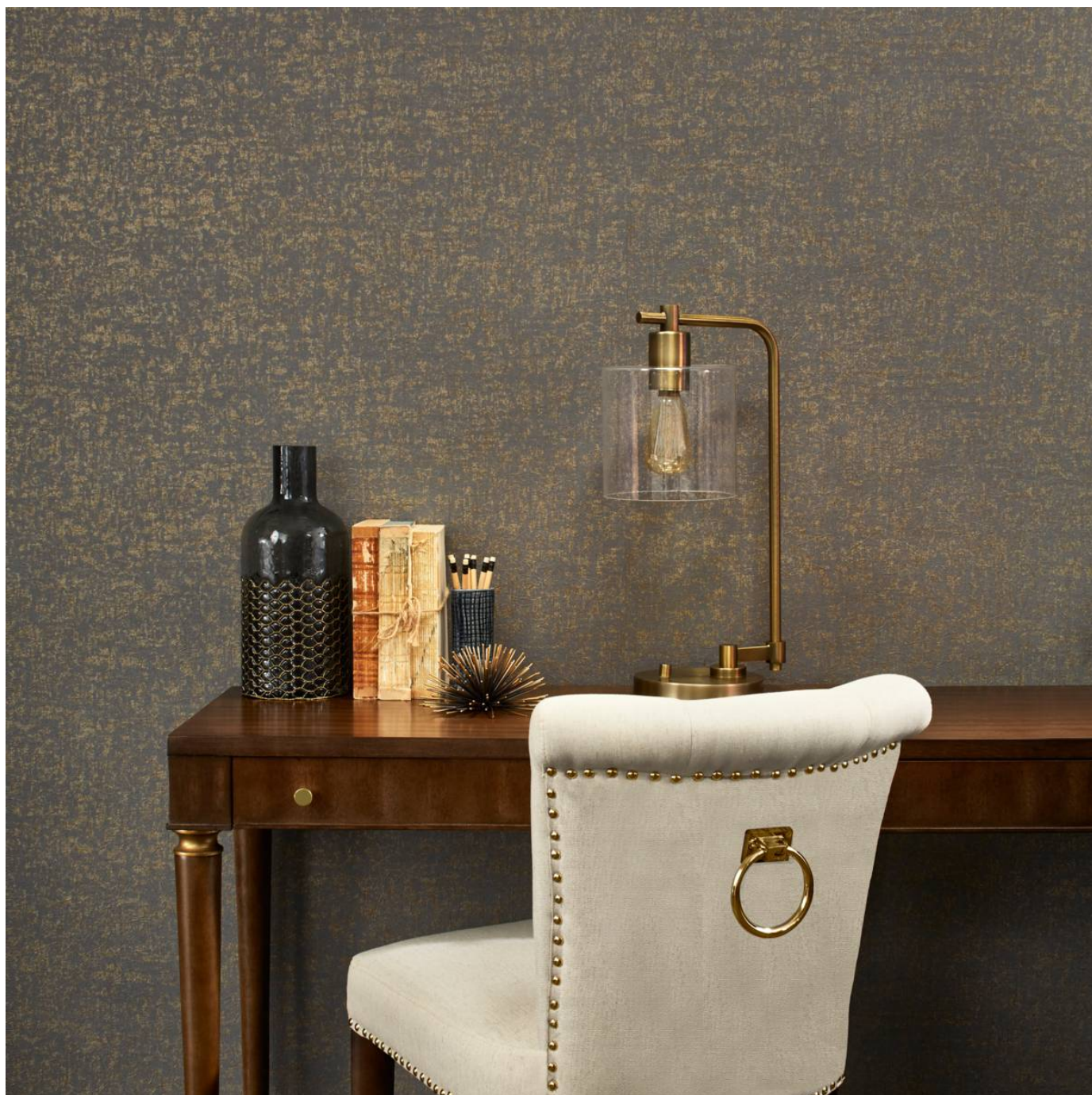


# RENAISSANCE

Wallcoverings » Commercial Wallcoverings



Brand: **Symphony**

Applications: **Walls**

1300 306 399

[info@baresque.com.au](mailto:info@baresque.com.au)

[baresque.com.au](http://baresque.com.au)

1 of 4

# RENAISSANCE

Wallcoverings » Commercial Wallcoverings

Renaissance is a 137cm wide commercial wallcovering with enchanting texture and a hint of metallic leaf that's available in 18 colourways.

✓ **Bleach Cleanable**

**Description** Enchanting texture coupled with organic contrast and a hint of metallic leaf.

**Composition** Vinyl face on a woven backing 20oz (452 g/m<sup>2</sup>)

**Environmental Info**

Formaldehyde free

Heavy metals free

Perfluorooctanoic acid free

No solvent inks

Low VOC emissions. Any VOCs dissipate quickly (faster than paint) through normal ventilation and have no recognized adverse impact on indoor air quality.

Durability means products do not need to be replaced regularly due to wear and tear and being cleanable, vinyl products are ideal for helping keep commercial environments clean of bacteria.

Baresque will only deal with vinyl manufacturers that comply with applicable state and federal regulations, provide a factory that is safe and clean for its employees to work in, recycle scrap and inks during the manufacturing process to minimize waste related to production.

**Pattern Repeat Size** N/A

**Roll Size** 137cm wide x 27.4m - Available by the lineal metre

**Fire Rating** Tested in accordance with AS ISO 9705 2003 for the purpose of determining the Group Number classification as required by the Building Code of Australia for the control of fire spread on interior wall and ceiling linings.

The result achieved was:  
Classification - Group 2  
Specific Extinction - Less than 250m<sup>2</sup>/kg

**Lead Time**

- 2-weeks (approx.) from Wednesday, subject to stock availability.
- Additional 1-week for Western Australia.
- Express delivery is available subject to a surcharge. Contact Baresque for details and pricing.

# RENAISSANCE

Wallcoverings » Commercial Wallcoverings

---

## Suggested Installation

Reverse hang / overlap and double cut.

Baresque recommends and supply Roman brand adhesives and primers.

---

## Care Instructions

Use cloth with any of the following in preferred order of use:

1: Clear warm water

2: Mild solution of liquid detergent and warm water

3: Isopropyl Alcohol (a.k.a. rubbing alcohol)

Remove any detergent with a clean, damp cloth. Gently pat dry.

For more difficult stains, dampen a soft white cloth with a solution of household bleach (10% bleach / 90% water). Rub gently.

Rinse with a water dampened cloth to remove bleach concentration.

Do not use solvent based or concentrated abrasive cleaning agents, lacquer thinners or nail polish remover as these may cause discolouration over a period of time.

Always test in an inconspicuous area first.

If care instructions don't deliver the expected results, cease cleaning method immediately and contact Baresque for assistance.

---

## Warranty

5-year warranty. Visit [baresque.com.au/warranty](https://www.baresque.com.au/warranty) for complete details.

---



# RENAISSANCE

Wallcoverings » Commercial Wallcoverings

## Colour & Finish Options



AZ53015 ARCHIVE  
WHITE



AZ53016 CARTOUCHE



AZ53017 WATERMARK



AZ53018 PARCHMENT



AZ53019 CHART  
GREY



AZ53020 THESIS INK



AZ53021  
MANUSCRIPT



AZ53022 SOFT  
PATINA



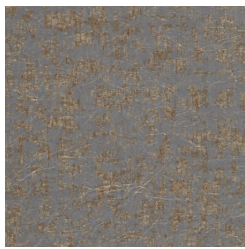
AZ53023 VOLUTE  
GREIGE



AZ53024 VELLUM



AZ53025 GLASSINE



AZ53026 GOLD  
BURNISH



AZ53027 PAPYRUS



AZ53028 VERDIGRIS



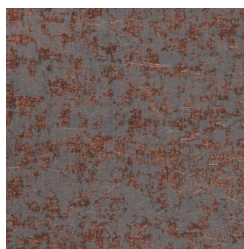
AZ53029 SIENNA  
SCROLL



AZ53030 HEMP



AZ53031 ROSA  
DOSSIER



AZ53032 SANGUINE  
OPUS