

# PULSE AZ525XXX

Wallcoverings » Commercial Wallcoverings



Brand: **Symphony**

Applications: **Walls**

1300 306 399

[info@baresque.com.au](mailto:info@baresque.com.au)

[baresque.com.au](http://baresque.com.au)

1 of 4

# PULSE AZ525XXX

Wallcoverings » Commercial Wallcoverings

Pulse is a 137cm wide commercial wallcovering with a woven-like look displayed on a natural colour. It's durable, cost effective and easy to clean.

✓ **Bleach Cleanable**

Description	Intersecting vertical and horizontal lines against a rich range of shades.
Composition	Vinyl face on a fabric backing
Environmental Info	<p>Formaldehyde free</p> <p>Heavy metals free</p> <p>Perfluorooctanoic acid free</p> <p>No solvent inks</p> <p>Low VOC emissions. Any VOCs dissipate quickly (faster than paint) through normal ventilation and have no recognized adverse impact on indoor air quality.</p> <p>Durability means products do not need to be replaced regularly due to wear and tear and being cleanable, vinyl products are ideal for helping keep commercial environments clean of bacteria.</p> <p>Baresque will only deal with vinyl manufacturers that comply with applicable state and federal regulations, provide a factory that is safe and clean for its employees to work in, recycle scrap and inks during the manufacturing process to minimize waste related to production.</p>
Roll Size	137cm x 27.4m - Available by the lineal metre
Fire Rating	<p>Tested in accordance with AS ISO 9705 2003 for the purpose of determining the Group Number classification as required by the Building Code of Australia for the control of fire spread on interior wall and ceiling linings.</p> <p>The result achieved was: Classification - Group 2 Specific Extinction - Less than 250m<sup>2</sup>/kg</p>
Lead Time	<ul style="list-style-type: none"><li>• 2-weeks (approx.) from Wednesday, subject to stock availability.</li><li>• Additional 1-week for Western Australia.</li><li>• Express delivery is available subject to a surcharge. Contact Baresque for details and pricing.</li></ul>

# PULSE AZ525XXX

Wallcoverings » Commercial Wallcoverings

---

## Suggested Installation

Reverse hang / overlap and double cut.

Baresque recommends and supply Roman brand adhesives and primers.

---

## Care Instructions

Use cloth with any of the following in preferred order of use:

1: Clear warm water

2: Mild solution of liquid detergent and warm water

3: Isopropyl Alcohol (a.k.a. rubbing alcohol)

Remove any detergent with a clean, damp cloth. Gently pat dry.

For more difficult stains, dampen a soft white cloth with a solution of household bleach (10% bleach / 90% water). Rub gently.

Rinse with a water dampened cloth to remove bleach concentration.

Do not use solvent based or concentrated abrasive cleaning agents, lacquer thinners or nail polish remover as these may cause discolouration over a period of time.

Always test in an inconspicuous area first.

If care instructions don't deliver the expected results, cease cleaning method immediately and contact Baresque for assistance.

---

## Warranty

5-year warranty. Visit [baresque.com.au/warranty](https://baresque.com.au/warranty) for complete details.

---

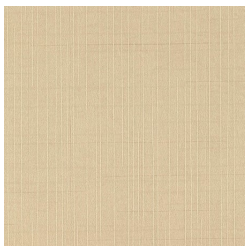
# PULSE AZ525XXX

Wallcoverings » Commercial Wallcoverings

## Colour & Finish Options

### COLOURWAY CARD

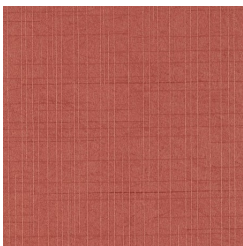
COLOURWAY CARD



AZ52580 GOLDEN  
RHAPSODY



AZ52581 EMBERGLOW



AZ52582 SALSA



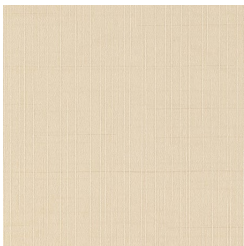
AZ52583 SAGE  
SERENADE



AZ52584 GREEN CHILI



AZ52585 TRUFFLE



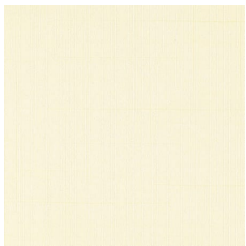
AZ52586 BEIGE SPELL



AZ52587 TAUPE MIST



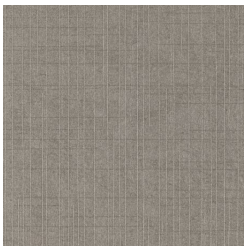
AZ52588 BRASSY



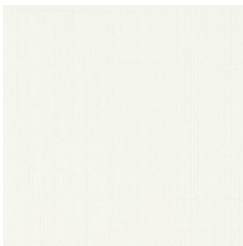
AZ52589 LYRICAL  
IVORY



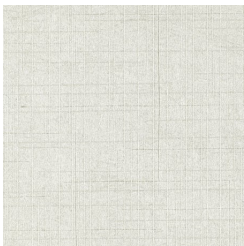
AZ52590 SILENT  
SILVER



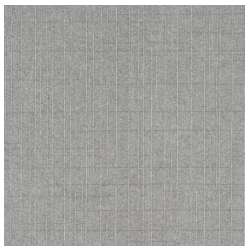
AZ52591 LUMINOUS  
GREY



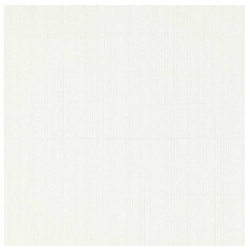
AZ52592 CLASSIC  
PEARL



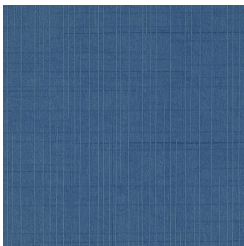
AZ52593 SILVER  
DREAM



AZ52594 FLUTE



AZ52595 POETIC  
WHITE



AZ52596 RHYTHM  
BUE



AZ52597 EVENING