

PRISM WALLCOVERING

Wallcoverings » Commercial Wallcoverings



Brand: **Versa**

Applications: **Walls**

1300 306 399

info@baresque.com.au

baresque.com.au

1 of 5

PRISM WALLCOVERING

Wallcoverings » Commercial Wallcoverings



PRISM WALLCOVERING

Wallcoverings » Commercial Wallcoverings

Prism is a 137cm wide wallcovering with a double geometric design pattern available in 15 colours. Durable, cost effective and easy to clean.

✓ Bleach Cleanable

Description	Graphic and classic in the ordered nature of lines and diamonds suggest a traditional lattice or mid-century modern motif.
Composition	Vinyl face on a non-woven backing 20oz (452 g/m ²)
Environmental Info	<p>Formaldehyde free</p> <p>Heavy metals free</p> <p>Perfluorooctanoic acid free</p> <p>No solvent inks</p> <p>Low VOC emissions. Any VOCs dissipate quickly (faster than paint) through normal ventilation and have no recognized adverse impact on indoor air quality.</p> <p>Durability means products do not need to be replaced regularly due to wear and tear and being cleanable, vinyl products are ideal for helping keep commercial environments clean of bacteria.</p> <p>Baresque will only deal with vinyl manufacturers that comply with applicable state and federal regulations, provide a factory that is safe and clean for its employees to work in, recycle scrap and inks during the manufacturing process to minimize waste related to production.</p>
Pattern Repeat Size	Straight match. 26.2cm V / 12cm H
Roll Size	137cm wide x 27.4m - Available by the lineal metre
Fire Rating	<p>Tested in accordance with AS ISO 9705 2003 for the purpose of determining the Group Number classification as required by the Building Code of Australia for the control of fire spread on interior wall and ceiling linings.</p> <p>The result achieved was: Classification - Group 2 Specific Extinction - Less than 250m²/kg</p>
Lead Time	<ul style="list-style-type: none">• 2-weeks (approx.) from Wednesday, subject to stock availability.• Additional 1-week for Western Australia.• Express delivery is available subject to a surcharge. Contact Baresque for details and pricing.

PRISM WALLCOVERING

Wallcoverings » Commercial Wallcoverings

Suggested Installation

Reverse hang / overlap and double cut.

Baresque recommends and supply Roman brand adhesives and primers.

Care Instructions

Always use a clean, white, soft cloth.

Use cloth with any of the following in preferred order of use:

1: Clear warm water

2: Mild solution of liquid detergent and warm water

3: Isopropyl Alcohol (a.k.a. rubbing alcohol)

Remove any detergent with a clean, damp cloth. Gently pat dry.

For more difficult stains, dampen a soft white cloth with a solution of household bleach (10% bleach / 90% water). Rub gently.

Rinse with a water dampened cloth to remove bleach concentration.

DO NOT USE solvent based or concentrated abrasive cleaning agents, lacquer thinners, nail polish remover as these may cause discolouration over a period of time.

Always test in an inconspicuous area first. If care instructions don't deliver the expected results, cease cleaning method immediately and contact Baresque for assistance.

Warranty

5-year warranty. Visit baresque.com.au/warranty for complete details.

PRISM WALLCOVERING

Wallcoverings » Commercial Wallcoverings

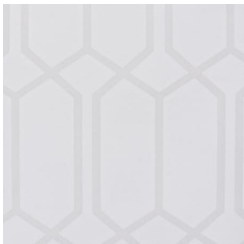
Colour & Finish Options

COLOURWAY CARD

COLOURWAY CARD



A153-029
CHANDELIER



A153-085 SILVER
LINING



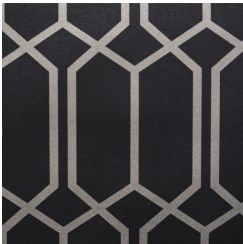
A153-163
TEMPTATION



A153-175 OFFSHORE



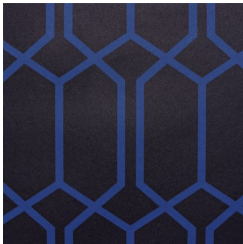
A153-181 IVORY
PALACE



A153-331 URBANITE



A153-374 BLACK
MAGIC



A153-382 BLUES CLUB



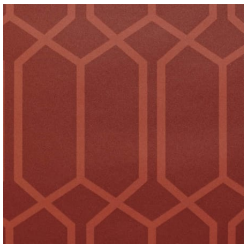
A153-455 RED DEVIL



A153-503
METROPOLITAN



A153-592 HIGH
SOCIETY



A153-670 HOT SAUCE



A153-828
SOPHISTICATION



A153-836
PENTHOUSE



A153-841 BOOT
STRAP