

PARADOX

Wallcoverings » Commercial Wallcoverings



Brand: **Koroseal**

Applications: **Walls**

1300 306 399

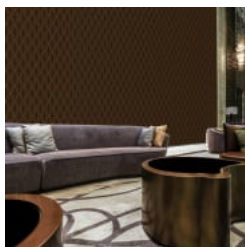
info@baresque.com.au

baresque.com.au

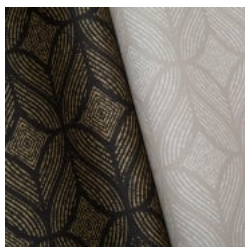
1 of 5

PARADOX

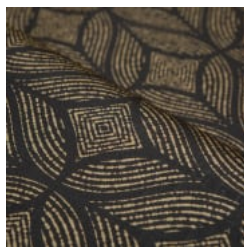
Wallcoverings » Commercial Wallcoverings



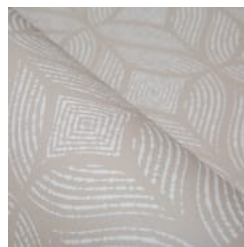
paradox-illuminate-
pr21-13-promo-5.jpg



paradox-promo-2.jpg



paradox-promo-3.jpg



paradox-promo-4.jpg

PARADOX

Wallcoverings » Commercial Wallcoverings

Paradox is a 137cm wide commercial wallcovering in a art deco mid-scale design available in 13 colourways. Highly durable, low VOC and anti-microbial.

Description

Paradox is an art deco inspired mid-scale design with a new creative direction combining soft curved shapes with sharp geometric elements. The printing technique of this playful geometric gives it a casual, relaxed aesthetic reminiscent of hand applied block printing.

The colours used in Paradox range from soft tinted neutrals to rich earthen colours with an artisanal influence. The modern fusion of Paradox provides endless design possibilities.

Features + Benefits

- * Bleach cleanable
- * 13 Colourways
- * Highly durable
- * Anti-microbial
- * Low VOC

Composition

Vinyl face on a non-woven backing

Environmental Info

Formaldehyde free

Heavy metals free

Perfluorooctanoic acid free

No solvent inks

Low VOC emissions. Any VOCs dissipate quickly (faster than paint) through normal ventilation and have no recognized adverse impact on indoor air quality.

Durability means products do not need to be replaced regularly due to wear and tear and being cleanable, vinyl products are ideal for helping keep commercial environments clean of bacteria.

Baresque will only deal with vinyl manufacturers that comply with applicable state and federal regulations, provide a factory that is safe and clean for its employees to work in, recycle scrap and inks during the manufacturing process to minimize waste related to production.

Pattern Repeat Size

45.7cm V

Roll Size

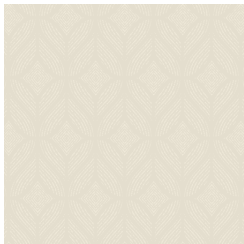
137cm wide x 27.4m - Available by the lineal metre

Fire Rating	<p>Tested in accordance with AS ISO 9705 2003 for the purpose of determining the Group Number classification as required by the Building Code of Australia for the control of fire spread on interior wall and ceiling linings.</p> <p>The result achieved was: Classification - Group 2 Specific Extinction - Less than 250m²/kg</p>
Lead Time	<ul style="list-style-type: none">• 2-weeks (approx.) from Wednesday, subject to stock availability.• Additional 1-week for Western Australia.• Express delivery is available subject to a surcharge. Contact Baresque for details and pricing.
Suggested Installation	<p>Non reverse hang/overlap double cut.</p> <p>Baresque recommends and supplies Roman brand adhesives and primers.</p>
Care Instructions	<p>Use cloth with any of the following in preferred order of use:</p> <ol style="list-style-type: none">1: Clear warm water2: Mild solution of liquid detergent and warm water3: Isopropyl Alcohol (a.k.a. rubbing alcohol) <p>Remove any detergent with a clean, damp cloth. Gently pat dry.</p> <p>For more difficult stains, dampen a soft white cloth with a solution of household bleach (10% bleach / 90% water). Rub gently.</p> <p>Rinse with a water dampened cloth to remove bleach concentration.</p> <p>Do not use solvent based or concentrated abrasive cleaning agents, lacquer thinners or nail polish remover as these may cause discolouration over a period of time.</p> <p>Always test in an inconspicuous area first.</p> <p>If care instructions don't deliver the expected results, cease cleaning method immediately and contact Baresque for assistance.</p>
Warranty	<p>5-year warranty. Visit baresque.com.au/warranty for complete details.</p>

Colour & Finish Options

COLOURWAY CARD

COLOURWAY CARD



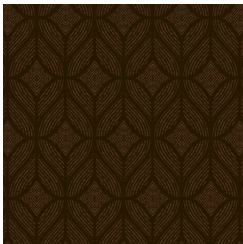
PR21-01 DREAM



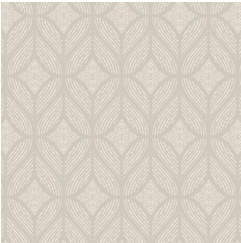
PR21-02 PATIENCE



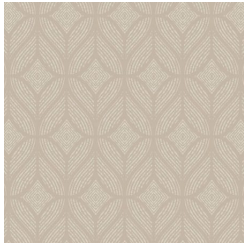
PR21-03 ENERGY



PR21-04 SHINE



PR21-05 ADAPT



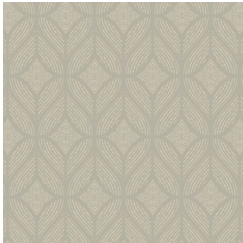
PR21-06 FAITH



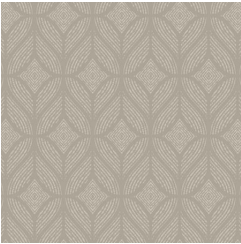
PR21-07 BOUNDARIES



PR21-08 WISDOM



PR21-09 WHISPER



PR21-10 WAIT



PR21-11 FUTURE



PR21-12 RESOLVE



PR21-13 ILLUMINATE