

MOONDANCE

Wallcoverings » Commercial Wallcoverings



Brand: **Symphony**

Applications: **Walls**

1300 306 399

info@baresque.com.au

baresque.com.au

1 of 6

MOONDANCE

Wallcoverings » Commercial Wallcoverings



baresque-
moondance-1.jpg



baresque-
moondance-2.jpg

MOONDANCE

Wallcoverings » Commercial Wallcoverings

Moondance is a 137cm wide commercial wallcovering that's available in 25 colourways. Versatile, durable, and easy to clean.

✓ **Bleach Cleanable**

Description Moondance is a texture and color story. The linen weave gives the illusion of fabric that glistens on the walls. The twenty four beautiful colors with metallic highlights dance through the design. They range from metallic tones of Into the Mystic and Fantabulous Night to neutral shades of Whisper n' Hush to bold colors like Crazy Love and Gypsy Soul. Moondance is perfect to transform any space.

Composition Vinyl face on a fabric backing Equivalent to 20oz (452 g/m²)

Environmental Info

Formaldehyde free

Heavy metals free

Perfluorooctanoic acid free

No solvent inks

Low VOC emissions. Any VOCs dissipate quickly (faster than paint) through normal ventilation and have no recognized adverse impact on indoor air quality.

Durability means products do not need to be replaced regularly due to wear and tear and being cleanable, vinyl products are ideal for helping keep commercial environments clean of bacteria.

Baresque will only deal with vinyl manufacturers that comply with applicable state and federal regulations, provide a factory that is safe and clean for its employees to work in, recycle scrap and inks during the manufacturing process to minimize waste related to production.

Pattern Repeat Size 45.7cm h x 137cm w

Roll Size 137cm wide x 27.4m - Available by the lineal metre

Fire Rating

Tested in accordance with AS ISO 9705 2003 for the purpose of determining the Group Number classification as required by the Building Code of Australia for the control of fire spread on interior wall and ceiling linings.

The result achieved was:
Classification - Group 2
Specific Extinction - Less than 250m²/kg

MOONDANCE

Wallcoverings » Commercial Wallcoverings

Lead Time	<ul style="list-style-type: none">• 2-weeks (approx.) from Wednesday, subject to stock availability.• Additional 1-week for Western Australia.• Express delivery is available subject to a surcharge. Contact Baresque for details and pricing.
Suggested Installation	<p>Reverse hang / overlap and double cut.</p> <p>Baresque recommends and supply Roman brand adhesives and primers.</p>
Care Instructions	<p>Use cloth with any of the following in preferred order of use:</p> <ol style="list-style-type: none">1: Clear warm water2: Mild solution of liquid detergent and warm water3: Isopropyl Alcohol (a.k.a. rubbing alcohol) <p>Remove any detergent with a clean, damp cloth. Gently pat dry.</p> <p>For more difficult stains, dampen a soft white cloth with a solution of household bleach (10% bleach / 90% water). Rub gently.</p> <p>Rinse with a water dampened cloth to remove bleach concentration.</p> <p>Do not use solvent based or concentrated abrasive cleaning agents, lacquer thinners or nail polish remover as these may cause discolouration over a period of time.</p> <p>Always test in an inconspicuous area first.</p> <p>If care instructions don't deliver the expected results, cease cleaning method immediately and contact Baresque for assistance.</p>
Warranty	5-year warranty. Visit baresque.com.au/warranty for complete details.

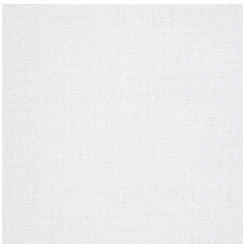
MOONDANCE

Wallcoverings » Commercial Wallcoverings

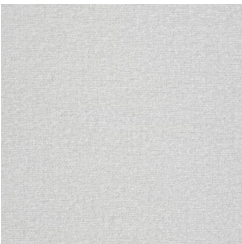
Colour & Finish Options

COLOURWAY CARD

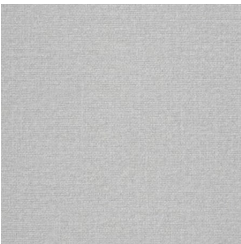
COLOURWAY CARD



AZ52350 HALL OF
FAME



AZ52351 INTO THE
MYSTIC



AZ52352 WILD
BREEZES



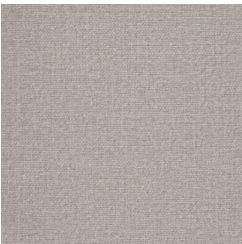
AZ52353
FANTABULOUS
NIGHT



AZ52354 VEEDON
FLEECE



AZ52355 IRISH LINEN



AZ52356
PHILOSOPHER'S
STONE



AZ52357 TRANSISTOR
RADIO



AZ52358 WHISPER N'
HUSH



AZ52359 CALEDONIA



AZ52360 BELFAST
COWBOY



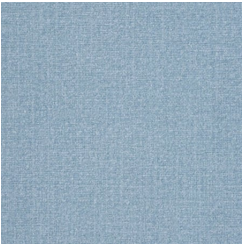
AZ52362 IVORY
TOWER



AZ52365 SAINT
DOMINIC



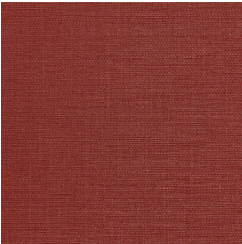
AZ52367 IN THE
GARDEN



AZ52369 BLUE
MONEY



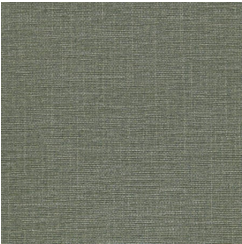
AZ52860
COPPERLINE



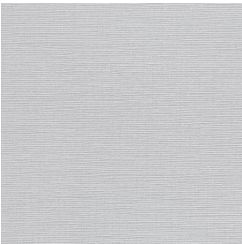
AZ52861 RED HOT



AZ52862 FRESH AIR



AZ52863 HOORAY
HAZEL



MOONDANCE

Wallcoverings » Commercial Wallcoverings

AZ52864 RATTLIN'
BOG



AZ53710 HAMPTONS
BEIGE

AZ52865 BEYOND
PALE

AZ52866 WHITE
VIOLET

AZ52867 IN THE
NAVY

AZ52868 BLACK
VELVET