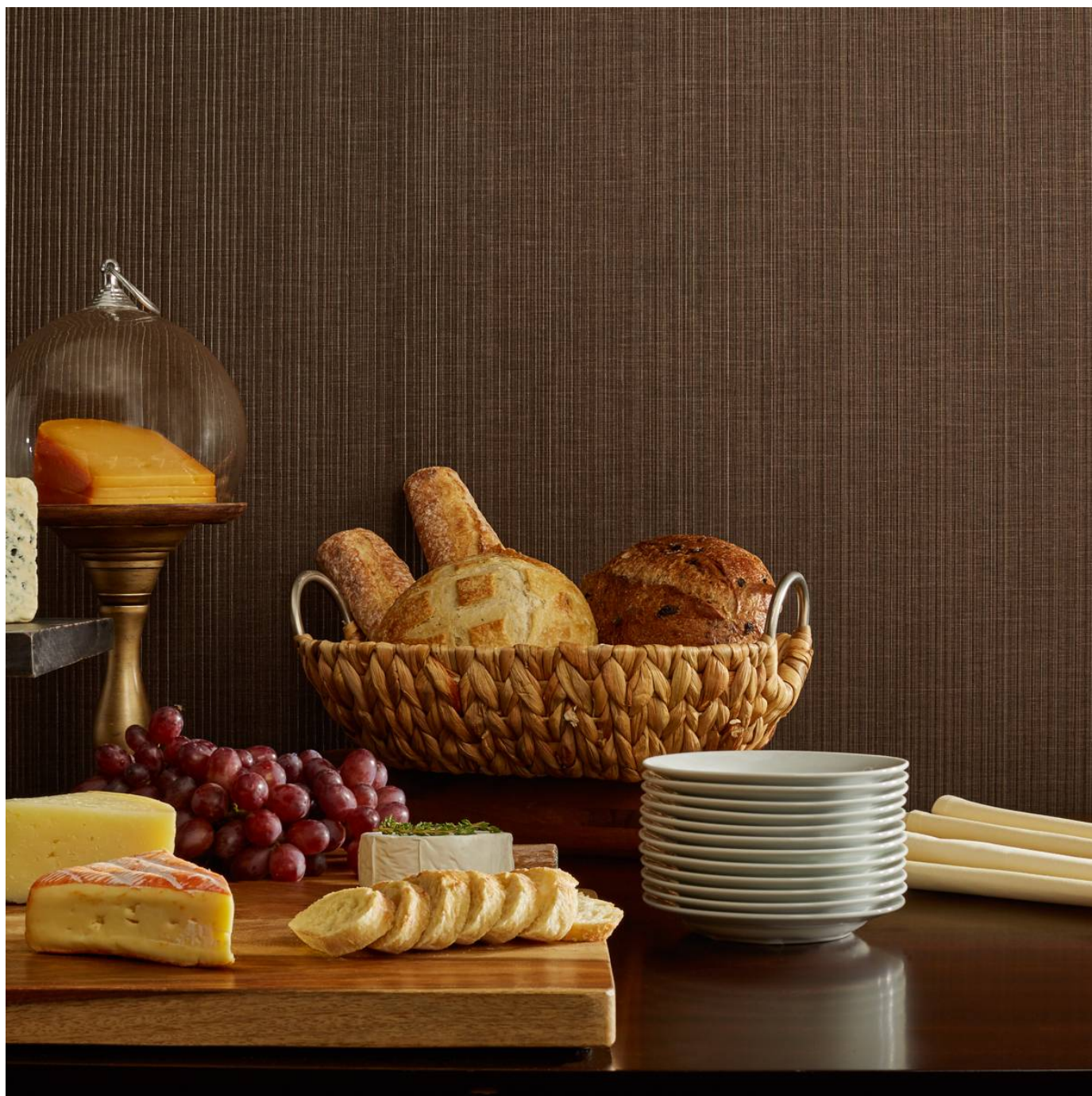


# LEVELS

Wallcoverings » Commercial Wallcoverings



Brand: **Symphony**

Applications: **Walls**

1300 306 399

[info@baresque.com.au](mailto:info@baresque.com.au)

[baresque.com.au](http://baresque.com.au)

1 of 5

# LEVELS

Wallcoverings » Commercial Wallcoverings

Levels is a 137cm wide commercial wallcovering. The pin cord stripe and vertical emboss mimics a wound guitar strings. Available in 24 colourways.

✓ **Bleach Cleanable**

Description	More subtle than its companion, Levels marches to its own beat. The pin cord stripe and vertical emboss mimics wound guitar strings and will bring harmony and flow to every room.
-------------	--

Composition	Vinyl face on a fabric backing Equivalent to 20oz (452 g/m <sup>2</sup> )
-------------	---

Environmental Info	<p>Formaldehyde free</p> <p>Heavy metals free</p> <p>Perfluorooctanoic acid free</p> <p>No solvent inks</p> <p>Low VOC emissions. Any VOCs dissipate quickly (faster than paint) through normal ventilation and have no recognized adverse impact on indoor air quality.</p> <p>Durability means products do not need to be replaced regularly due to wear and tear and being cleanable, vinyl products are ideal for helping keep commercial environments clean of bacteria.</p> <p>Baresque will only deal with vinyl manufacturers that comply with applicable state and federal regulations, provide a factory that is safe and clean for its employees to work in, recycle scrap and inks during the manufacturing process to minimize waste related to production.</p>
--------------------	--

Pattern Repeat Size	N/A
---------------------	-----

Roll Size	137cm wide x 27.4m - Available by the lineal metre
-----------	--

Fire Rating	<p>Tested in accordance with AS ISO 9705 2003 for the purpose of determining the Group Number classification as required by the Building Code of Australia for the control of fire spread on interior wall and ceiling linings.</p> <p>The result achieved was: Classification - Group 2 Specific Extinction - Less than 250m<sup>2</sup>/kg</p>
-------------	--

# LEVELS

Wallcoverings » Commercial Wallcoverings

---

Lead Time	<ul style="list-style-type: none"><li>• 2-weeks (approx.) from Wednesday, subject to stock availability.</li><li>• Additional 1-week for Western Australia.</li><li>• Express delivery is available subject to a surcharge. Contact Baresque for details and pricing.</li></ul>
Suggested Installation	<p>Reverse hang / overlap and double cut.</p> <p>Baresque recommends and supply Roman brand adhesives and primers.</p>
Care Instructions	<p>Use cloth with any of the following in preferred order of use:</p> <ol style="list-style-type: none"><li>1: Clear warm water</li><li>2: Mild solution of liquid detergent and warm water</li><li>3: Isopropyl Alcohol (a.k.a. rubbing alcohol)</li></ol> <p>Remove any detergent with a clean, damp cloth. Gently pat dry.</p> <p>For more difficult stains, dampen a soft white cloth with a solution of household bleach (10% bleach / 90% water). Rub gently.</p> <p>Rinse with a water dampened cloth to remove bleach concentration.</p> <p>Do not use solvent based or concentrated abrasive cleaning agents, lacquer thinners or nail polish remover as these may cause discolouration over a period of time.</p> <p>Always test in an inconspicuous area first.</p> <p>If care instructions don't deliver the expected results, cease cleaning method immediately and contact Baresque for assistance.</p>
Warranty	<p>5-year warranty. Visit <a href="https://baresque.com.au/warranty">baresque.com.au/warranty</a> for complete details.</p>

---



# LEVELS

Wallcoverings » Commercial Wallcoverings

## Colour & Finish Options

### COLOURWAY CARD

COLOURWAY CARD



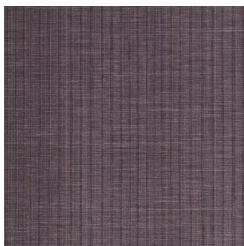
AZ53115 SWEET  
HARMONY



AZ53116 TANGO TAN



AZ53117 VIOLA



AZ53118 PURPLE RAIN



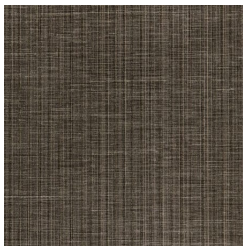
AZ53119 FRENCH  
HORN



AZ53120 FLAT LINES



AZ53121 TAUPE  
TEMPO



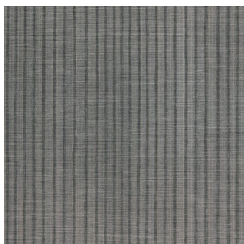
AZ53122 BRONZED  
BASS



AZ53123 SERENE  
CREAM



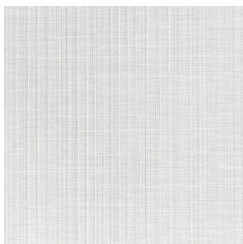
AZ53124 SILVER  
BELLS



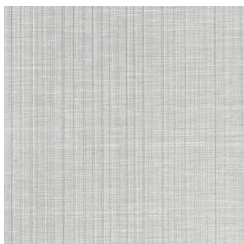
AZ53125 PEWTER  
PIANO



AZ53126 BLACKOUT



AZ53127 NEUTRAL  
NOTE



AZ53128 COOL  
CHORD



AZ53129 BLUE BEAT



AZ53130 TEAL TUNE



AZ53131 GENTLE  
STRINGS



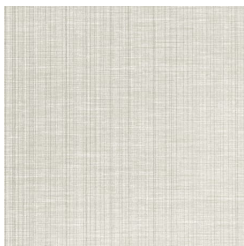
AZ53132 GOLDEN  
KEYS



AZ53133 GREEN  
LIGHT



AZ53134 DISCO



AZ53135 SOFT



AZ53136 MELLO



AZ53137 RUSTY



AZ53138 WOODWIND

## LEVELS

**Wallcoverings** » Commercial Wallcoverings

FEVER

MELODY

CELLO

## RHYTHM

1300 306 399  
info@baresque.com.au  
**baresque.com.au**

5 of 5