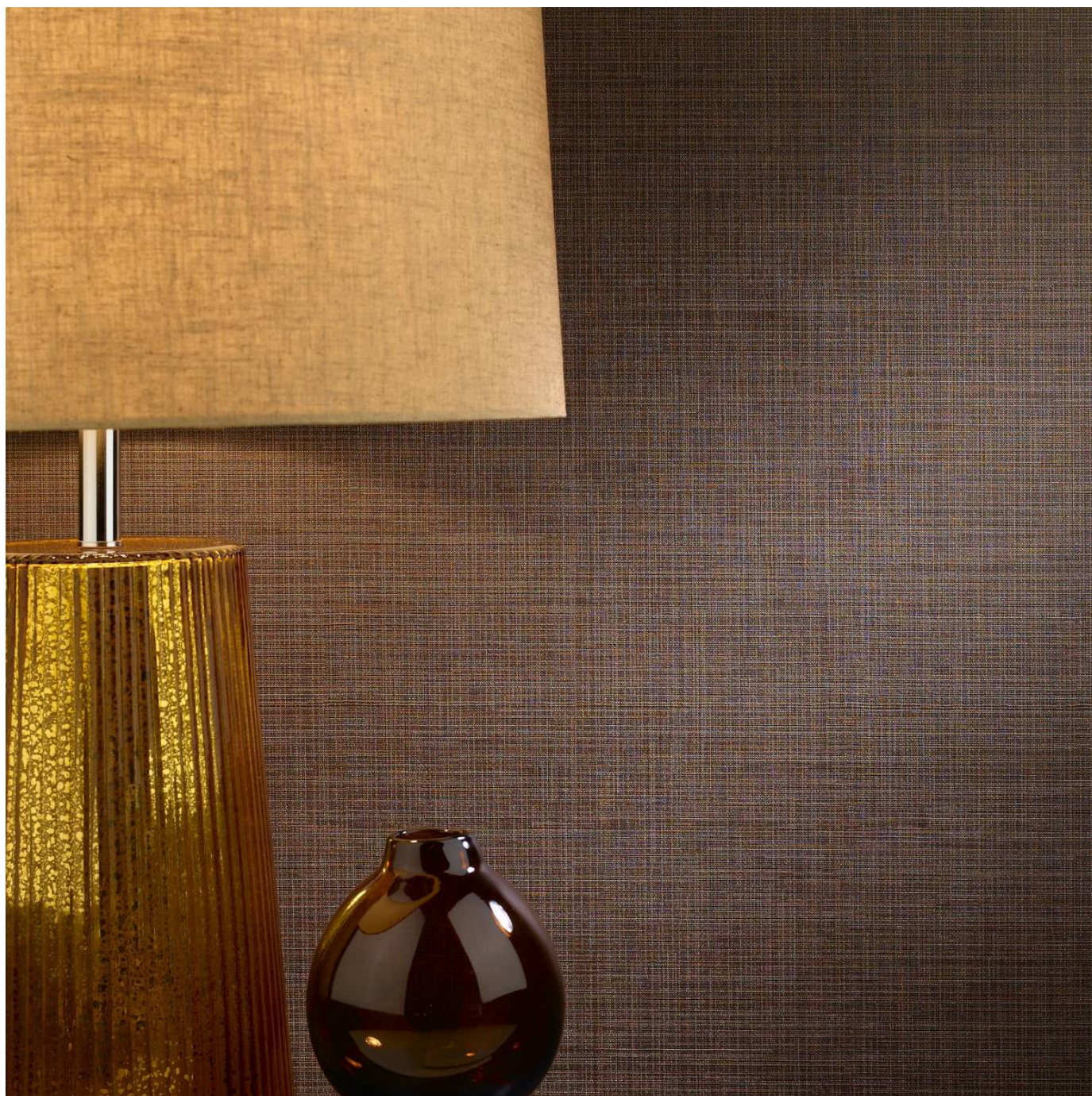


# IMPROMPTU

Wallcoverings » Commercial Wallcoverings

---



Brand: **Symphony**

Applications: **Walls**

# IMPROMPTU

Wallcoverings » Commercial Wallcoverings

---



impromptu-  
promo-2.jpg

# IMPROMPTU

Wallcoverings » Commercial Wallcoverings

Impromptu is a 137cm wide commercial wallcovering with a rustic weave that adds depth and texture that's available in 24 colourways.

✓ **Bleach Cleanable**

Description	A rustic weave adds depth and texture. Some colours of Impromptu are also available in matching P3TEC - a new generation of Advanced Wall Protection. Check out the Additional Comments below or the DOWNLOADS tab for more details.
Composition	Vinyl face on a fabric backing 20oz (452 g/m <sup>2</sup> )
Environmental Info	<p>Formaldehyde free</p> <p>Heavy metals free</p> <p>Perfluorooctanoic acid free</p> <p>No solvent inks</p> <p>Low VOC emissions. Any VOCs dissipate quickly (faster than paint) through normal ventilation and have no recognized adverse impact on indoor air quality.</p> <p>Durability means products do not need to be replaced regularly due to wear and tear and being cleanable, vinyl products are ideal for helping keep commercial environments clean of bacteria.</p> <p>Baresque will only deal with vinyl manufacturers that comply with applicable state and federal regulations, provide a factory that is safe and clean for its employees to work in, recycle scrap and inks during the manufacturing process to minimize waste related to production.</p>
Roll Size	137cm wide x 27.4m - Available by the lineal metre
Fire Rating	<p>Tested in accordance with AS ISO 9705 2003 for the purpose of determining the Group Number classification as required by the Building Code of Australia for the control of fire spread on interior wall and ceiling linings.</p> <p>The result achieved was: Classification - Group 2 Specific Extinction - Less than 250m<sup>2</sup>/kg</p>
Lead Time	<ul style="list-style-type: none"><li>• 2-weeks (approx.) from Wednesday, subject to stock availability.</li><li>• Additional 1-week for Western Australia.</li><li>• Express delivery is available subject to a surcharge. Contact Baresque for details and pricing.</li></ul>



# IMPROMPTU

Wallcoverings » Commercial Wallcoverings

---

## Suggested Installation

Reverse hang / overlap and double cut.

Baresque recommends and supply Roman brand adhesives and primers.

---

## Care Instructions

Use cloth with any of the following in preferred order of use:

1: Clear warm water

2: Mild solution of liquid detergent and warm water

3: Isopropyl Alcohol (a.k.a. rubbing alcohol)

Remove any detergent with a clean, damp cloth. Gently pat dry.

For more difficult stains, dampen a soft white cloth with a solution of household bleach (10% bleach / 90% water). Rub gently.

Rinse with a water dampened cloth to remove bleach concentration.

Do not use solvent based or concentrated abrasive cleaning agents, lacquer thinners or nail polish remover as these may cause discolouration over a period of time.

Always test in an inconspicuous area first.

If care instructions don't deliver the expected results, cease cleaning method immediately and contact Baresque for assistance.

---

## Warranty

5-year warranty. Visit [baresque.com.au/warranty](https://baresque.com.au/warranty) for complete details.

---

## Additional Comments

Impromptu is also available in matching P3TEC design Simplicity - a new generation of Advanced Wall Protection. Cross over colours are : AZ51809 , 10, 11, 12, 22 , 29, 30 AZ52960, 61, 62, 63, 65, 66, 68, 69, 70, 71

---

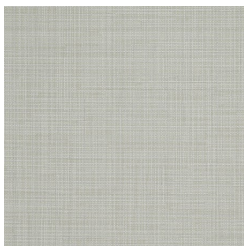
# IMPROMPTU

Wallcoverings » Commercial Wallcoverings

## Colour & Finish Options

### COLOURWAY CARD

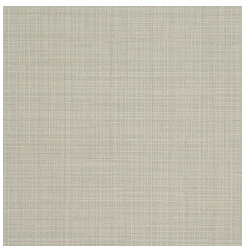
COLOURWAY CARD



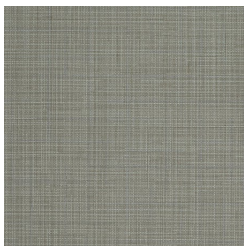
AZ51801 DAYDREAM



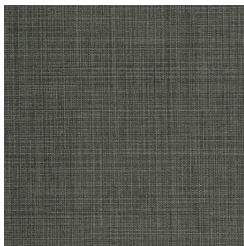
AZ51809 CLOUD 9



AZ51810 STONE



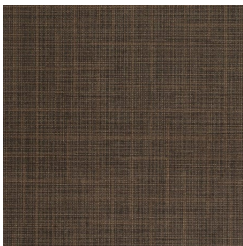
AZ51811 AVENUE



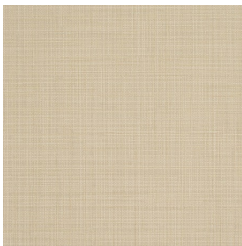
AZ51812 BLACK  
METAL



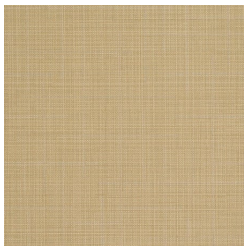
AZ51813 PATIO WHITE



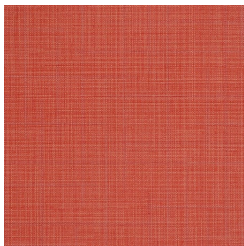
AZ51816 FIRESCREEN



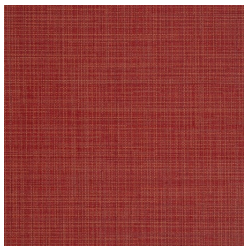
AZ51818 SEYCHELLES  
SAND



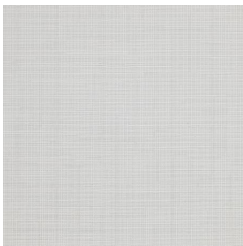
AZ51822 TALL GRASS



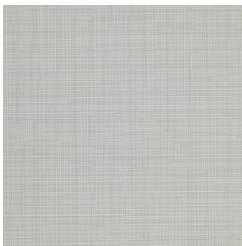
AZ51829 SMACK  
MELON



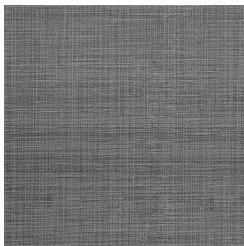
AZ51830 COURTLAND  
APPLE



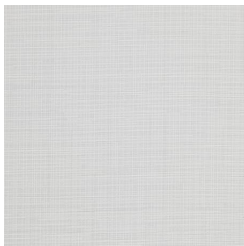
AZ52960 OYSTER



AZ52961 PEBBLE



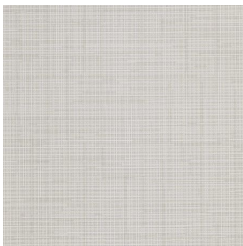
AZ52962 CINDER



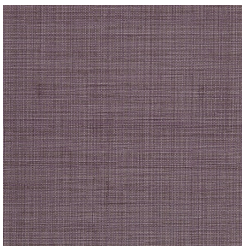
AZ52963 SNOWFLAKE



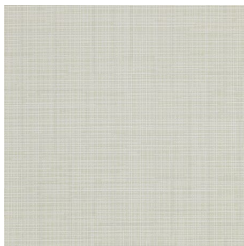
AZ52964 DENIM



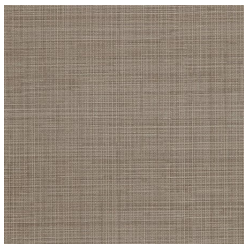
AZ52965 CREAM



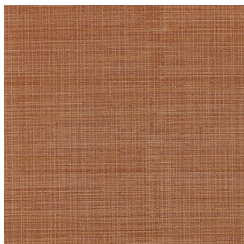
AZ52966 PLUM  
PASSION



AZ52967 HONEY DEW



AZ52968 MUSHROOM



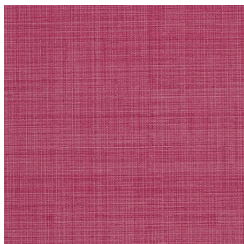
AZ52969 COPPER



AZ52970  
LEMONGRASS



AZ52971 CARRIBEAN



AZ52972 AZALEA