

GILDED LINEN

Wallcoverings » Commercial Wallcoverings



Brand: **Koroseal**

Applications: **Walls**

GILDED LINEN

Wallcoverings » Commercial Wallcoverings

Gilded Linen is a 137cm wide commercial wallcovering with the blended softness of a woven textile that's available in 21 colourways.

✓ **Bleach Cleanable**

| | |
|---------------------|--|
| Description | With the blended softness of a woven textile, Gilded Linen looks back to a hand-crafted tradition and moves forward with a mottled effect with the glimmer of colourful hope |
| Composition | Vinyl face on a fabric backing Equivalent to 20oz (452g/m ²) |
| Environmental Info | <p>Formaldehyde free</p> <p>Heavy metals free</p> <p>Perfluorooctanoic acid free</p> <p>No solvent inks</p> <p>Low VOC emissions. Any VOCs dissipate quickly (faster than paint) through normal ventilation and have no recognized adverse impact on indoor air quality.</p> <p>Durability means products do not need to be replaced regularly due to wear and tear and being cleanable, vinyl products are ideal for helping keep commercial environments clean of bacteria.</p> <p>Baresque will only deal with vinyl manufacturers that comply with applicable state and federal regulations, provide a factory that is safe and clean for its employees to work in, recycle scrap and inks during the manufacturing process to minimize waste related to production.</p> |
| Pattern Repeat Size | N/A |
| Roll Size | 137cm wide x 27.4m - Available by the lineal metre |
| Fire Rating | <p>Tested in accordance with AS ISO 9705 2003 for the purpose of determining the Group Number classification as required by the Building Code of Australia for the control of fire spread on interior wall and ceiling linings.</p> <p>The result achieved was: Classification - Group 2 Specific Extinction - Less than 250m²/kg</p> |

GILDED LINEN

Wallcoverings » Commercial Wallcoverings

| | |
|-----------|---|
| Lead Time | <ul style="list-style-type: none">• 2-weeks (approx.) from Wednesday, subject to stock availability.• Additional 1-week for Western Australia.• Express delivery is available subject to a surcharge. Contact Baresque for details and pricing. |
|-----------|---|

| | |
|------------------------|--|
| Suggested Installation | <p>Reverse hang / overlap and double cut.</p> <p>Baresque recommends and supply Roman brand adhesives and primers.</p> |
|------------------------|--|

| | |
|-------------------|---|
| Care Instructions | <p>Use cloth with any of the following in preferred order of use:</p> <ol style="list-style-type: none">1: Clear warm water2: Mild solution of liquid detergent and warm water3: Isopropyl Alcohol (a.k.a. rubbing alcohol) <p>Remove any detergent with a clean, damp cloth. Gently pat dry.</p> <p>For more difficult stains, dampen a soft white cloth with a solution of household bleach (10% bleach / 90% water). Rub gently.</p> <p>Rinse with a water dampened cloth to remove bleach concentration.</p> <p>Do not use solvent based or concentrated abrasive cleaning agents, lacquer thinners or nail polish remover as these may cause discolouration over a period of time.</p> <p>Always test in an inconspicuous area first.</p> <p>If care instructions don't deliver the expected results, cease cleaning method immediately and contact Baresque for assistance.</p> |
|-------------------|---|

| | |
|----------|--|
| Warranty | 5-year warranty. Visit baresque.com.au/warranty for complete details. |
|----------|--|

GILDED LINEN

Wallcoverings » Commercial Wallcoverings

Colour & Finish Options

COLOURWAY CARD

COLOURWAY CARD



6922-03 MOONLIGHT



6922-07 WHITE LINEN



6922-11 WAGER



6922-20 THE MAGIC
BOOK



6922-21 ALABASTER



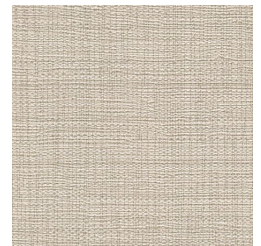
6922-24 OSIRIS



6922-29 FEATHER
DOWN



6922-30 SKONDIA



6922-31 ENCHANTED



6922-32 REVERANCE



6922-35 SUMMERSET



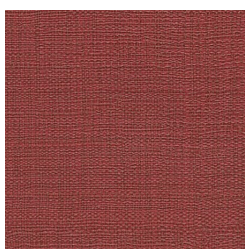
6922-55 PARISIAN
GREY



6922-63
INCARNATION



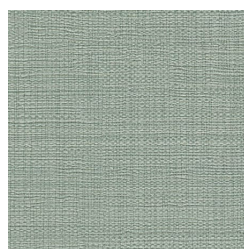
6922-65 VIVACIOUS



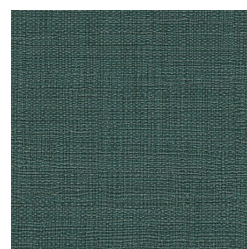
6922-66 SANGRIA



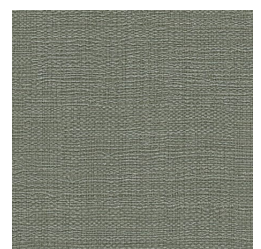
6922-77 DEEP INDIGO



6922-80 MINTED



6922-88 EMERALD
CITY



6922-90 PEWTER



6922-94 SKYE



6922-99 GREAT SEA

1300 306 399

info@baresque.com.au

baresque.com.au