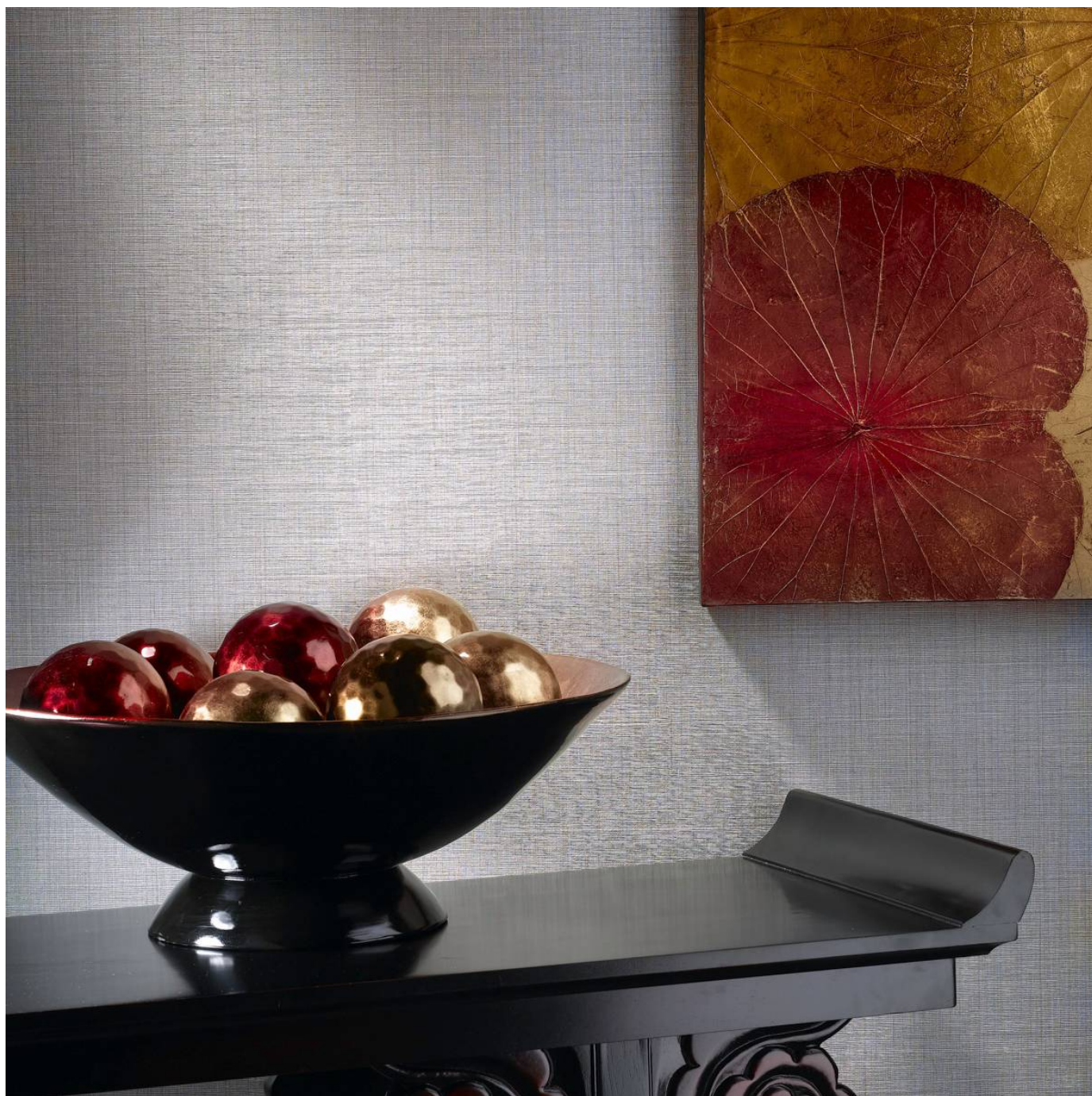


FRET

Wallcoverings » Commercial Wallcoverings



Brand: **Symphony**

Applications: **Walls**

1300 306 399

info@baresque.com.au

baresque.com.au

1 of 5

FRET

Wallcoverings » Commercial Wallcoverings



fret-promo-2.jpg

FRET

Wallcoverings » Commercial Wallcoverings

Fret is a 137cm wide commercial wallcovering that's available in 18 colourways. It's versatile, durable and easy to clean.

✓ **Bleach Cleanable**

Description A rustic weave adds depths and texture

Composition Vinyl face on a fabric backing 20oz (452 g/m²)

Environmental Info

Formaldehyde free

Heavy metals free

Perfluorooctanoic acid free

No solvent inks

Low VOC emissions. Any VOCs dissipate quickly (faster than paint) through normal ventilation and have no recognized adverse impact on indoor air quality.

Durability means products do not need to be replaced regularly due to wear and tear and being cleanable, vinyl products are ideal for helping keep commercial environments clean of bacteria.

Baresque will only deal with vinyl manufacturers that comply with applicable state and federal regulations, provide a factory that is safe and clean for its employees to work in, recycle scrap and inks during the manufacturing process to minimize waste related to production.

Pattern Repeat Size N/A

Roll Size 137cm wide x 27.4m - Available by the lineal metre

Fire Rating

Tested in accordance with AS ISO 9705 2003 for the purpose of determining the Group Number classification as required by the Building Code of Australia for the control of fire spread on interior wall and ceiling linings.

The result achieved was:
Classification - Group 2
Specific Extinction - Less than 250m²/kg

Lead Time

- 2-weeks (approx.) from Wednesday, subject to stock availability.
- Additional 1-week for Western Australia.
- Express delivery is available subject to a surcharge. Contact Baresque for details and pricing.

FRET

Wallcoverings » Commercial Wallcoverings

Suggested Installation

Reverse hang / overlap and double cut.

Baresque recommends and supply Roman brand adhesives and primers.

Care Instructions

Use cloth with any of the following in preferred order of use:

1: Clear warm water

2: Mild solution of liquid detergent and warm water

3: Isopropyl Alcohol (a.k.a. rubbing alcohol)

Remove any detergent with a clean, damp cloth. Gently pat dry.

For more difficult stains, dampen a soft white cloth with a solution of household bleach (10% bleach / 90% water). Rub gently.

Rinse with a water dampened cloth to remove bleach concentration.

Do not use solvent based or concentrated abrasive cleaning agents, lacquer thinners or nail polish remover as these may cause discolouration over a period of time.

Always test in an inconspicuous area first.

If care instructions don't deliver the expected results, cease cleaning method immediately and contact Baresque for assistance.

Warranty

5-year warranty. Visit baresque.com.au/warranty for complete details.

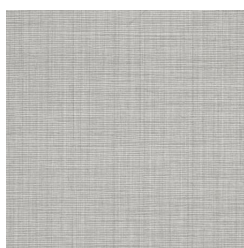
Colour & Finish Options

COLOURWAY CARD

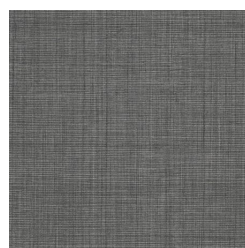
COLOURWAY CARD



AZ52100 PURE



AZ52101 METROPOLIS



AZ52102 PETROL



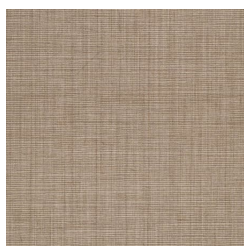
AZ52103 AVIARY



AZ52104 GRACIE



AZ52105 OUTER
SPACE



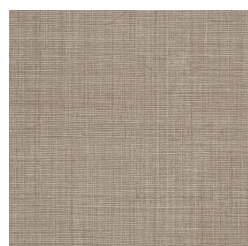
AZ52107 FRENCH
TOAST



AZ52108 TREE BARK



AZ52109 SHORE
POINT



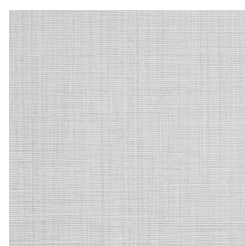
AZ52110 PLATINUM
TAUPE



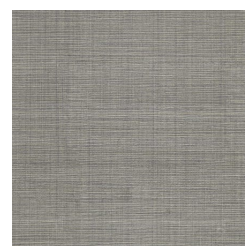
AZ52111 BRASS
CYMBAL



AZ52117 POMPEIAN
RED



AZ52900 TIN WHITE



AZ52901 BLUE
PEWTER



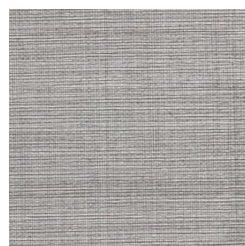
AZ52903 WINTER
NOON



AZ52904 GOLD
STANDARD



AZ52905 PURPLE
NIGHT



AZ52902 WARM GREY