

# BAREGE

Wallcoverings » Commercial Wallcoverings



Brand: **Versa**

Applications: **Walls**

1300 306 399

[info@baresque.com.au](mailto:info@baresque.com.au)

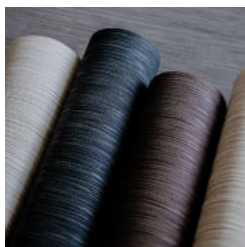
[baresque.com.au](http://baresque.com.au)

1 of 5

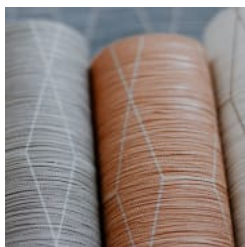
# BAREGE

Wallcoverings » Commercial Wallcoverings

---



barege-promo-2.jpg



barege-promo-3.jpg



barege-promo-4.jpg

# BAREGE

Wallcoverings » Commercial Wallcoverings

Barege is a 137cm wide wallcovering comprised of an innovative level of nature inspired detail and tactile form that's available in 12 colourways.

✓ Bleach Cleanable

✓ Environmentally Friendly

✓ Phthalate Free

✓ PVC-Free

## Description

Versa's PVC-FREE range offers you the same look, feel and performance as luxury commercial vinyl wallcoverings. Soft multi-colour prints are paired with a new transitional grass cloth embossing. Barege is comprised of an innovative level of nature inspired detail and tactile form. Coordinate with Barege Texture.

## Composition

Olefin on a fabric backing 20oz (452 g/m<sup>2</sup>)

## Environmental Info

Formaldehyde free

Heavy metals free

Perfluorooctanoic acid free

No solvent inks

Low VOC emissions. Any VOCs dissipate quickly (faster than paint) through normal ventilation and have no recognized adverse impact on indoor air quality.

Durability means products do not need to be replaced regularly due to wear and tear and being cleanable, vinyl products are ideal for helping keep commercial environments clean of bacteria.

Baresque will only deal with vinyl manufacturers that comply with applicable state and federal regulations, provide a factory that is safe and clean for its employees to work in, recycle scrap and inks during the manufacturing process to minimize waste related to production.

## Pattern Repeat Size

9.1cm V / 4.4cm H

## Roll Size

137cm wide x 27.4m - Available by the lineal metre

## Fire Rating

Tested in accordance with AS ISO 9705 2003 for the purpose of determining the Group Number classification as required by the Building Code of Australia for the control of fire spread on interior wall and ceiling linings.

Classification - Group 3

Specific Extinction - Less than 250m<sup>2</sup>/kg

# BAREGE

Wallcoverings » Commercial Wallcoverings

---

Lead Time	<ul style="list-style-type: none"><li>• 2-weeks (approx.) from Wednesday, subject to stock availability.</li><li>• Additional 1-week for Western Australia.</li><li>• Express delivery is available subject to a surcharge. Contact Baresque for details and pricing.</li></ul>
-----------	---

---

Suggested Installation	<p>Non reverse hang/overlap double cut.</p> <p>Baresque recommends and supplies Roman brand adhesives and primers.</p>
------------------------	--

---

Care Instructions	<p>Always use a clean, white, soft cloth.</p> <p>Use cloth with any of the following in preferred order of use:</p> <ol style="list-style-type: none"><li>1: Clear warm water</li><li>2: Mild solution of liquid detergent and warm water</li><li>3: Isopropyl Alcohol (a.k.a. rubbing alcohol)</li></ol> <p>Remove any detergent with a clean, damp cloth. Gently pat dry.</p> <p>For more difficult stains, dampen a soft white cloth with a solution of household bleach (10% bleach / 90% water). Rub gently.</p> <p>Rinse with a water dampened cloth to remove bleach concentration.</p> <p>DO NOT USE solvent based or concentrated abrasive cleaning agents, lacquer thinners, nail polish remover as these may cause discolouration over a period of time.</p> <p>Always test in an inconspicuous area first. If care instructions don't deliver the expected results, cease cleaning method immediately and contact Baresque for assistance.</p>
-------------------	--

---

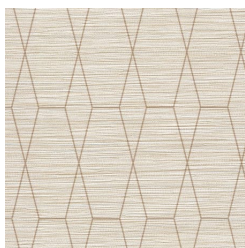
Warranty	5-year warranty. Visit <a href="https://baresque.com.au/warranty">baresque.com.au/warranty</a> for complete details.
----------	--

---

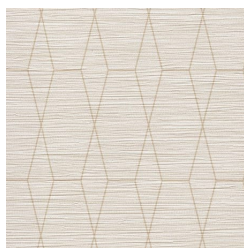
## Colour & Finish Options



AVF15-021 NUAGE



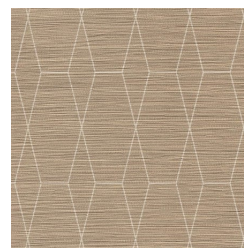
AVF15-017 LAINE



AVF15-055 PERLE



AVF15-148 SABLE



AVF15-173 JURA



AVF15-189 BOIS



AVF15-221 BRUME



AVF15-315 PACIFIQUE



AVF15-477 ROUILLE



AVF15-843 CIEL



AVF15-872 ROCHE



AVF15-885 GRANITE