

BALI GRILLE

Wallcoverings » Commercial Wallcoverings



Brand: **Bolta**

Applications: **Walls**

1300 306 399

info@baresque.com.au

baresque.com.au

1 of 4

BALI GRILLE

Wallcoverings » Commercial Wallcoverings

Bali Grille is a 132cm wide wallcovering with contemporary geometric pattern and a bold graphic design that's available in 9 colourways.

✓ **Bleach Cleanable**

Description Contemporary geometric meets tropical sophistication in Bali Grille. The dramatic bold graphic design overlays a chunky woven ground. Co-ordinates with Bali.

Composition Vinyl face on a fabric backing Equivalent to 20oz (452 g/m²)

Environmental Info

- Formaldehyde free
- Heavy metals free
- Perfluorooctanoic acid free
- No solvent inks

Low VOC emissions. Any VOCs dissipate quickly (faster than paint) through normal ventilation and have no recognized adverse impact on indoor air quality.

Durability means products do not need to be replaced regularly due to wear and tear and being cleanable, vinyl products are ideal for helping keep commercial environments clean of bacteria.

Baresque will only deal with vinyl manufacturers that comply with applicable state and federal regulations, provide a factory that is safe and clean for its employees to work in, recycle scrap and inks during the manufacturing process to minimize waste related to production.

Pattern Repeat Size 61cm H x 44cm W

Roll Size 132cm wide X 27.4m- Available by the lineal metre.

Fire Rating Tested in accordance with AS ISO 9705 2003 for the purpose of determining the Group Number classification as required by the Building Code of Australia for the control of fire spread on interior wall and ceiling linings.

The result achieved was:
Classification - Group 2
Specific Extinction - Less than 250m²/kg

Lead Time

- 2-weeks (approx.) from Wednesday, subject to stock availability.
- Additional 1-week for Western Australia.
- Express delivery is available subject to a surcharge. Contact Baresque for details and pricing.

BALI GRILLE

Wallcoverings » Commercial Wallcoverings

Suggested Installation

Reverse hang / overlap and double cut.

Baresque recommends and supply Roman brand adhesives and primers.

Care Instructions

Use cloth with any of the following in preferred order of use:

1: Clear warm water

2: Mild solution of liquid detergent and warm water

3: Isopropyl Alcohol (a.k.a. rubbing alcohol)

Remove any detergent with a clean, damp cloth. Gently pat dry.

For more difficult stains, dampen a soft white cloth with a solution of household bleach (10% bleach / 90% water). Rub gently.

Rinse with a water dampened cloth to remove bleach concentration.

Do not use solvent based or concentrated abrasive cleaning agents, lacquer thinners or nail polish remover as these may cause discolouration over a period of time.

Always test in an inconspicuous area first.

If care instructions don't deliver the expected results, cease cleaning method immediately and contact Baresque for assistance.

Warranty

5-year warranty. Visit baresque.com.au/warranty for complete details.

BALI GRILLE

Wallcoverings » Commercial Wallcoverings

Colour & Finish Options

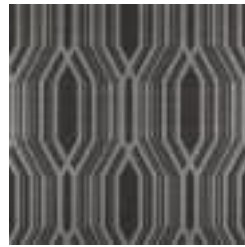
COLOURWAY CARD



BB-BG-01 WATER LILY



BB-BG-02 RICE FIELD



BB-BG-03 BLACK
COBRA



BB-BG-04 ARABICA
BEAN



BB-BG-06 STONE
CARVING



BB-BG-08 SEASIDE



BB-BG-10 BAMBOO



BB-BG-12 ORCHID



BB-BG-13 ZEBRA