

SEMPRE

Wallcoverings » Advanced Wall Protection



Brand: **Versa**

Applications: **Walls**

SEMPRE

Wallcoverings » Advanced Wall Protection

Sempre is a 132cm wide wall protection that's resistant to scratches, stains and withstands. Installs like a wallcovering. Available in 10 colours.

- ✓ **Bleach Cleanable**
- ✓ **Easy Clean**
- ✓ **Extended Warranty**
- ✓ **Extreme Durability**
- ✓ **High Stain Resistance**
- ✓ **Ultra Performance**

Description	Versa Impact is a range of Advanced Wall Protection options that offer beautiful wall protection with high performance, easy installation and high quality design. Features + Benefits: * Withstands impact * Scratch and wear layer * Maximum durability and resistance to stains * Bleach cleanable * Installs like a wallcovering
Composition	Extra thick vinyl face on a drill fabric backing Equivalent to 37oz (859 g/m²)
Environmental Info	<p>Formaldehyde free</p> <p>Heavy metals free</p> <p>Perfluorooctanoic acid free</p> <p>No solvent inks</p> <p>Low VOC emissions. Any VOCs dissipate quickly (faster than paint) through normal ventilation and have no recognized adverse impact on indoor air quality.</p> <p>Durability means products do not need to be replaced regularly due to wear and tear and being cleanable, vinyl products are ideal for helping keep commercial environments clean of bacteria.</p> <p>Baresque will only deal with vinyl manufacturers that comply with applicable state and federal regulations, provide a factory that is safe and clean for its employees to work in, recycle scrap and inks during the manufacturing process to minimize waste related to production.</p>
Pattern Repeat Size	N/A
Roll Size	132cm wide x 18.2m - Available by the half (9.1m) or full roll (18.2m) only
Fire Rating	<p>Tested in accordance with AS ISO 9705 2003 for the purpose of determining the Group Number classification as required by the Building Code of Australia for the control of fire spread on interior wall and ceiling linings.</p> <p>The result achieved was: Classification - Group 2 Specific Extinction - Less than 250m²/kg</p>

SEMPRE

Wallcoverings » Advanced Wall Protection

Lead Time	<ul style="list-style-type: none">• 2-weeks (approx.) from Wednesday, subject to stock availability.• Additional 1-week for Western Australia.• Express delivery is available subject to a surcharge. Contact Baresque for details and pricing.
Suggested Installation	<p>Reverse hang alternate drops/overlap and double cut.</p> <p>Advanced Wall Protection requires a specific installation method and we strongly recommend you use one of our recommended installers.</p> <p>Download the Installation Instructions for details.</p> <p>Baresque recommends and supply Roman brand adhesives and primers.</p>
Care Instructions	<p>1. Completion:</p> <p>Immediately upon completion of installation, installer shall make sure that these products are cleaned and free of any layout marks, excess adhesive or surface blemishes. Remove excess adhesive with methods and materials recommended by the adhesive manufacturer.</p> <p>2. Clean-Up and Routine Maintenance:</p> <p>Rigid Profiles: For general cleaning, use disinfectant cleaner.</p> <p>All Purpose Cleaner Heavy Duty: Use a clean, lint-free cloth and wipe clean. Do not use any abrasive cleaning cloths or sponges.</p> <p>1. Spray products onto profile and wipe with a dampened cloth.</p> <p>2. Repeat process if stain remains. If cleaning product residue remains, rinse with water.</p>
Warranty	5-year warranty. Visit baresque.com.au/warranty for complete details.

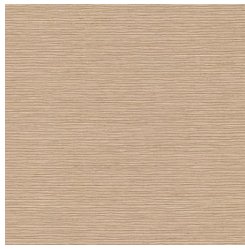
SEMPRE

Wallcoverings » Advanced Wall Protection

Colour & Finish Options



ASR02-710 SEMOLINA



ASR02-452 TURMERIC



ASR02-525
SHOREWOOD



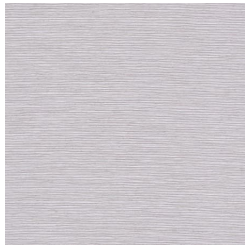
ASR02-513 QUARRY



ASR02-344 PRUSSIAN



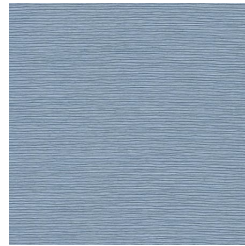
ASR02-127 EGGSHELL



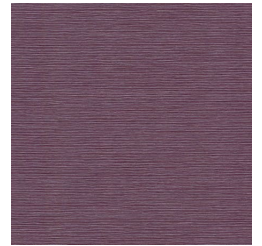
ASR02-114 HEATHER
GREY



ASR02-296
CHARTREUSE



ASR02-374 LAKESIDE



ASR02-315 DAHLIA