

CHEVRON TILES

Acoustics » Tiles



Brand: **Zintra**

Applications: **Tiles**

CHEVRON TILES

Acoustics » Tiles

Chevron Tile is ideal for absorbing sounds and reducing the noise level in a space. Made of 100% recyclable material, it's available in 28 colours.

Description	Have some creative fun by mixing and matching Zintra Plain and Etch Tiles in 28 colours and 13 shapes. The combinations are ... well almost limitless! Install as either wall to wall or as feature artwork to create an option suitable for any commercial, education or hospitality environment. Check out the Zintra 12mm colour range in the DOWNLOADS
Composition	Zintra Acoustic Panel - 100% Solution Dyed (Colour Through) Polyester. 2.3 kg/m ²
Environmental Info	Easily recycled through standard recycling channels
Lead Time	<ul style="list-style-type: none">• 2-3 weeks.• Additional 1-week for Western Australia.
Suggested Installation	<p>Supplied as a set of individual tiles.</p> <p>Arrange as required.</p> <p>Adhere to substrate using contact adhesive, Liquid Nails or Z clips.</p> <p>Download the Handling and Installation guide for full instructions.</p>
Care Instructions	<p>Vacuum to remove dust.</p> <p>Dab Zintra with a damp clean cloth and mild solution of liquid detergent and warm water. Repeat using only clean water, then pat dry with a lint free cloth.</p> <p>For difficult stains, use a solution of household bleach (10% bleach / 90% water). To remove the bleach, repeat using a clean, water dampened cloth, then pat dry.</p> <p>Always test in an inconspicuous area first and if you don't see the expected results, contact us.</p>
Warranty	5-year warranty. Visit baresque.com.au/warranty for complete details.
Additional Comments	NRC - 0.45 Indoor only. Available in both Plain and Etch. Sold in sets. Also available with Digital Print. Not suitable as a free standing product.
How to Specify	1. Zintra Colour

CHEVRON TILES

Acoustics » Tiles

Colour & Finish Options



ETCH BARK



ETCH BRICK



ETCH CADET



ETCH CHAMBRAY



ETCH COBALT



ETCH ECRU



ETCH EUCALYPTUS



ETCH FOSSIL



ETCH FROST



ETCH GRASS



ETCH GREIGE



ETCH IRONBARK



ETCH IVORY



ETCH LINEN



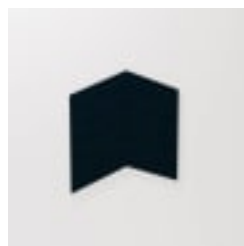
ETCH MALACHITE



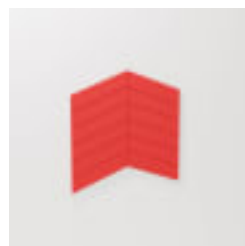
ETCH MANDARIN



ETCH MERBAU



ETCH MIDNIGHT



ETCH OCHRE



ETCH OLIVE



ETCH PEBBLE



ETCH PEWTER



ETCH SKY



ETCH SLATE



ETCH SMOKE

CHEVRON TILES

Acoustics » Tiles



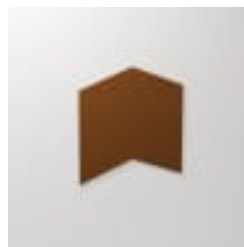
ETCH SPOTTED GUM



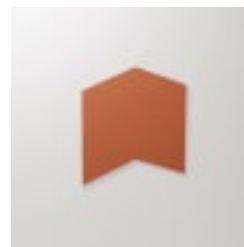
ETCH SUNSHINE



ETCH TAR



PLAIN BARK



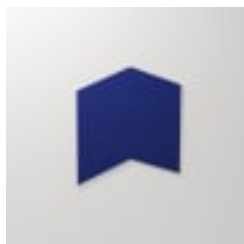
PLAIN BRICK



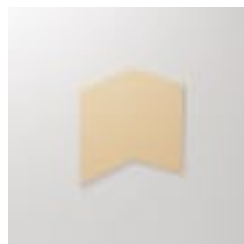
PLAIN CADET



PLAIN CHAMBRAY



PLAIN COBALT



PLAIN ECRU



PLAIN EUCALYPTUS



PLAIN FOSSIL



PLAIN FROST



PLAIN GRASS



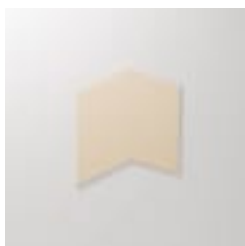
PLAIN GREIGE



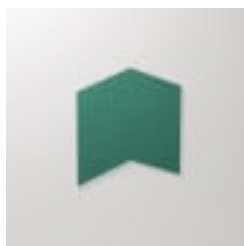
PLAIN IRONBARK



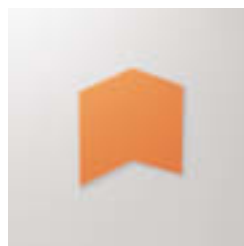
PLAIN IVORY



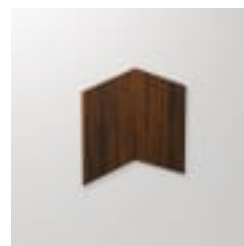
PLAIN LINEN



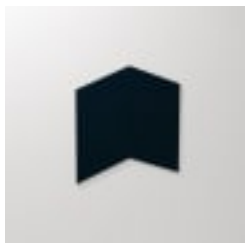
PLAIN MALACHITE



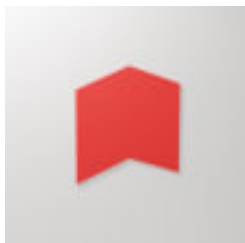
PLAIN MANDARIN



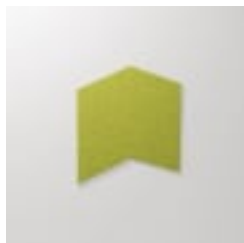
PLAIN MERBAU



PLAIN MIDNIGHT



PLAIN OCHRE



PLAIN OLIVE



PLAIN PEBBLE



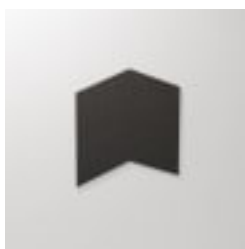
PLAIN PEWTER

CHEVRON TILES

Acoustics » Tiles



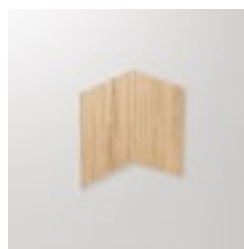
PLAIN SKY



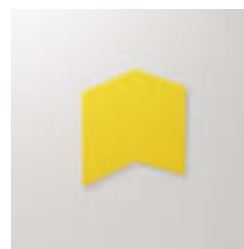
PLAIN SLATE



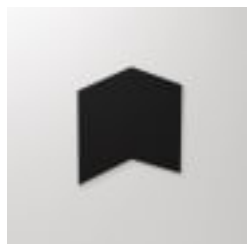
PLAIN SMOKE



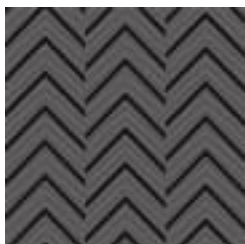
PLAIN SPOTTED GUM



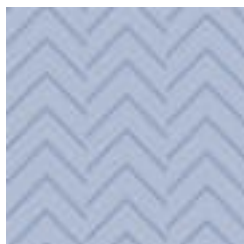
PLAIN SUNSHINE



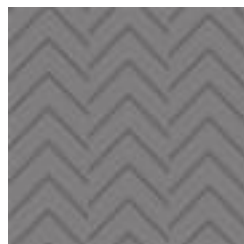
PLAIN TAR



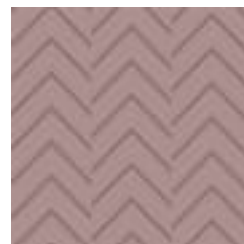
BLACK TIE



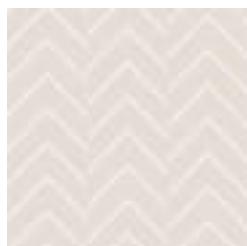
CASCADE



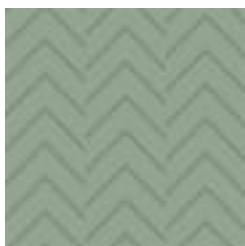
FOUNDRY



GARNET



SHOJI



WASABI