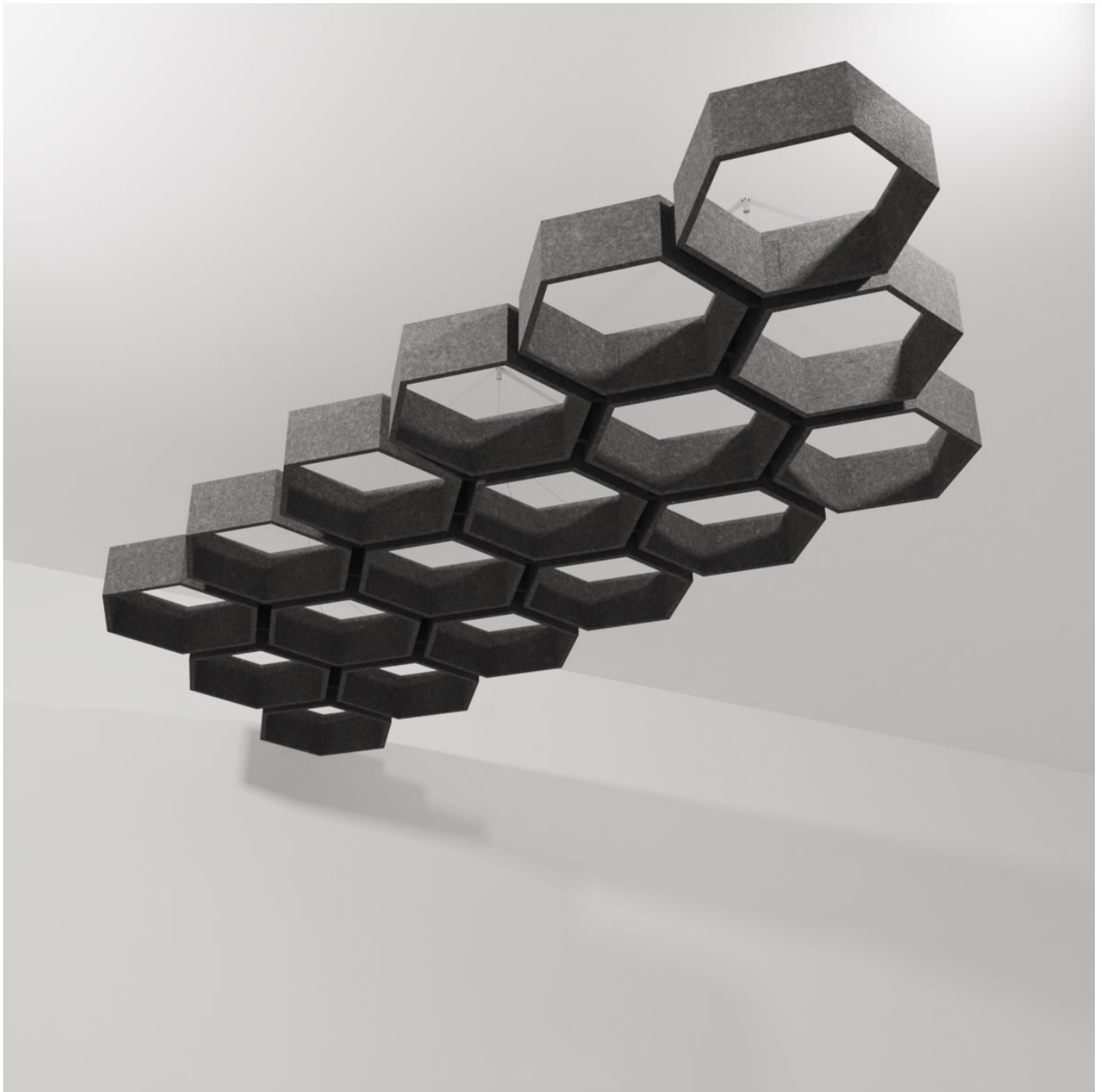


CONNECT HIVE

Acoustics » Acoustic Baffles



Brand: **Zintra**

Collections: **Connect Baffles**

Applications: **Ceilings**

1300 306 399

info@baresque.com.au

baresque.com.au

1 of 7

CONNECT HIVE

Acoustics » Acoustic Baffles

Add sculptural on-trend geo-accent to your ceiling space with Connect Hive Baffles. Designed for full ceiling coverage.

✓ Acoustic

✓ Bleach Cleanable

✓ Easy Clean

✓ Easy Install

Description

Add sculptural on-trend geo-accent to your ceiling space with Connect Baffles. An innovative solution to large areas requiring improved acoustics, Connect Baffle options are designed with full ceiling coverage in mind and will create a ceiling space with architectural shape, form and definitive character. **Connect Hive** showcases a network of interconnected hexagons, offering a visually striking and cohesive design. This pattern introduces a sense of symmetry and harmony to interior spaces.

Connect Baffles are also available in 4 other great designs:

Cirrus is characterized by a linear, interconnected design, arranged in a flowing, cohesive formation. This pattern adds a sense of movement and unity to interior spaces.

Cubix features a grid of interconnected squares, creating a visually dynamic and orderly design. This pattern brings a sense of structure and balance to interior spaces.

Prismatic features a collection of interconnected triangles, presenting a visually captivating and harmonious design. This pattern introduces a sense of structure and balance to interior spaces.

Rise showcases a combination of interconnected geometric shapes, including small rectangles and larger, randomized forms. This captivating design adds visual interest and complexity to interior spaces.

How to Specify

1. Select Design
2. Select Size
3. Select Zintra Colour

Composition

Zintra Acoustic Panel - 100% Solution Dyed (Colour Through) Polyester
12mm (1/2") -Density 2.4 kg /m² 0.5 lb/ft²

Sustainability

Zintra is made from 100% recyclable materials.

- 60% post-consumer recycled content from PET bottles.
- 35% pre-consumer recycled content from PET chips
- 5% polylactic acid (PLA)

CONNECT HIVE

Acoustics » Acoustic Baffles

Dimensions	<p>Hive</p> <ul style="list-style-type: none">• 18 hexagons / set, 2.6m² (21.7 SF)• 1027mm (40.4") w x 2544mm (100.2") d x 120mm (4.7") h
Fire Rating	<p>ASTM-E84 – Class A classification AS ISO 9705 – 2003 – Group 1 classification EN-13501 – B-s2-d0 classification</p>
Supplied As	<p>Connect Hive</p> <ul style="list-style-type: none">• 18 Connect Connectors• 1 x each Hanger Bolt, Adjustable Fastener, Cable with swage end and barrel.
Fabrication Techniques	<p>Stanley knife and straight edge</p>
Assembly & Delivery	<p>Connect Baffles are supplied flat pack.</p> <p>Assembled your Connect Baffle then suspended from the ceiling using hanging hardware supplied.</p> <p>Recommended 2 People assembly</p> <p>Go to the Technical Documents and download the Installation Guide for more details.</p>
Suggested Installation	<p>Go to Technical Documents and download the Installation Guide for more details.</p>
Care Instructions	<p>Vacuum to remove dust.</p> <p>Dab Zintra with a damp clean cloth and mild solution of liquid detergent and warm water. Repeat using only clean water, then pat dry with a lint free cloth.</p> <p>For difficult stains, use a solution of household bleach (10% bleach / 90% water). To remove the bleach, repeat using a clean, water dampened cloth, then pat dry.</p> <p>Always test in an inconspicuous area first and if you don't see the expected results, contact us.</p>
Customisable	<p>The Zintra Acoustic Solutions range is customisable to your project. Please get in touch with your local contact for details.</p>

CONNECT HIVE

Acoustics » Acoustic Baffles

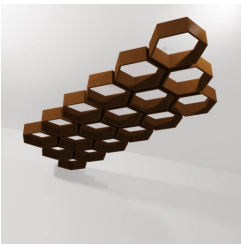
Additional Comments NRC Rating

- Without Air Gap: Up to 0.90
 - With 24" (610mm) Air Gap: Up to 0.95
-

CONNECT HIVE

Acoustics » Acoustic Baffles

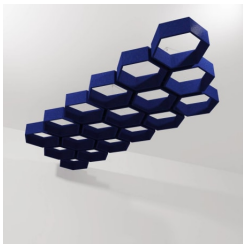
Colour & Finish Options



BARK/COCOA



CHAMBRAY/
PERIWINKLE



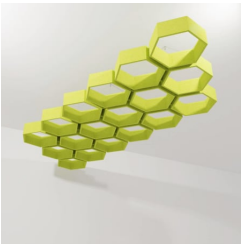
COBALT/NAVY



ECRU/TAUPE



FROST/WHITE



GRASS/LIME



IRON BARK



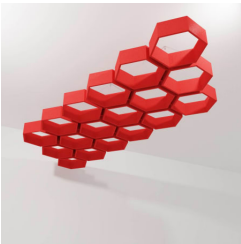
IVORY/MILKY



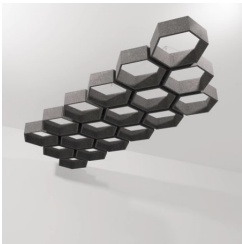
LINEN/CREAM



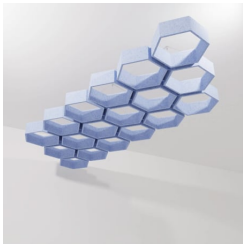
MANDARIN/ORANGE



OCHRE/BLUSH



PEWTER/GREY



SKY/BLUE



SLATE/ASH



SMOKE/SILVER



SUNSHINE/YELLOW



TAR/BLACK

Zintra 12mm Solid PET



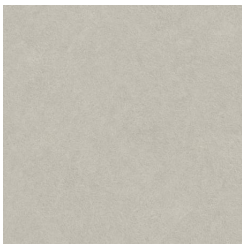
Bark



Brick



Cadet



Chambray



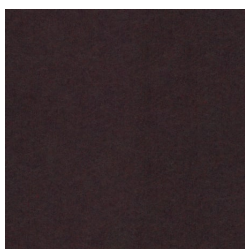
Cobalt

CONNECT HIVE

Acoustics » Acoustic Baffles



Ecu



Elderberry



Fossil



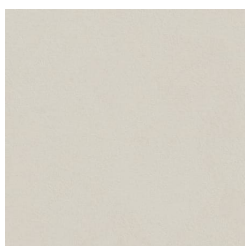
Frost



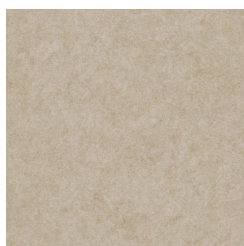
Grass



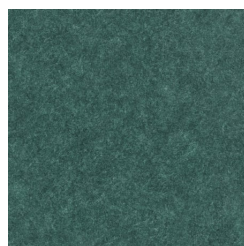
Greige



Ivory



Linen



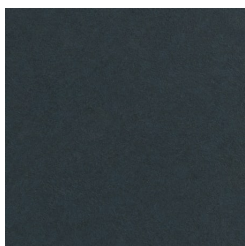
Malachite



Mandarin



Meadow



Midnight



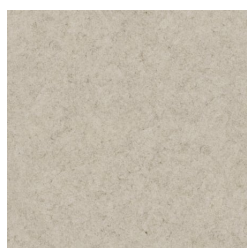
Ochre



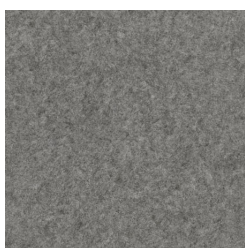
Olive



Parchment



Pebble



Pewter



Saffron



Sky



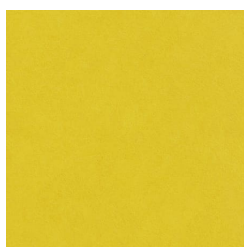
Smoke



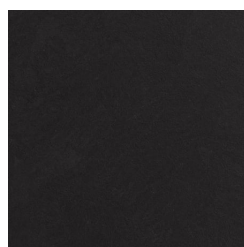
Slate



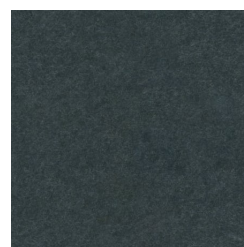
Storm



Sunshine



Tar



Twilight

Zintra Timber

1300 306 399

info@baresque.com.au

baresque.com.au

CONNECT HIVE

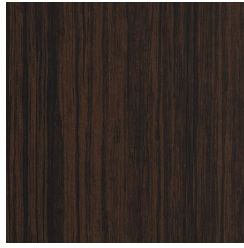
Acoustics » Acoustic Baffles



Eucalyptus



Ironbark



Merbau



Spotted Gum