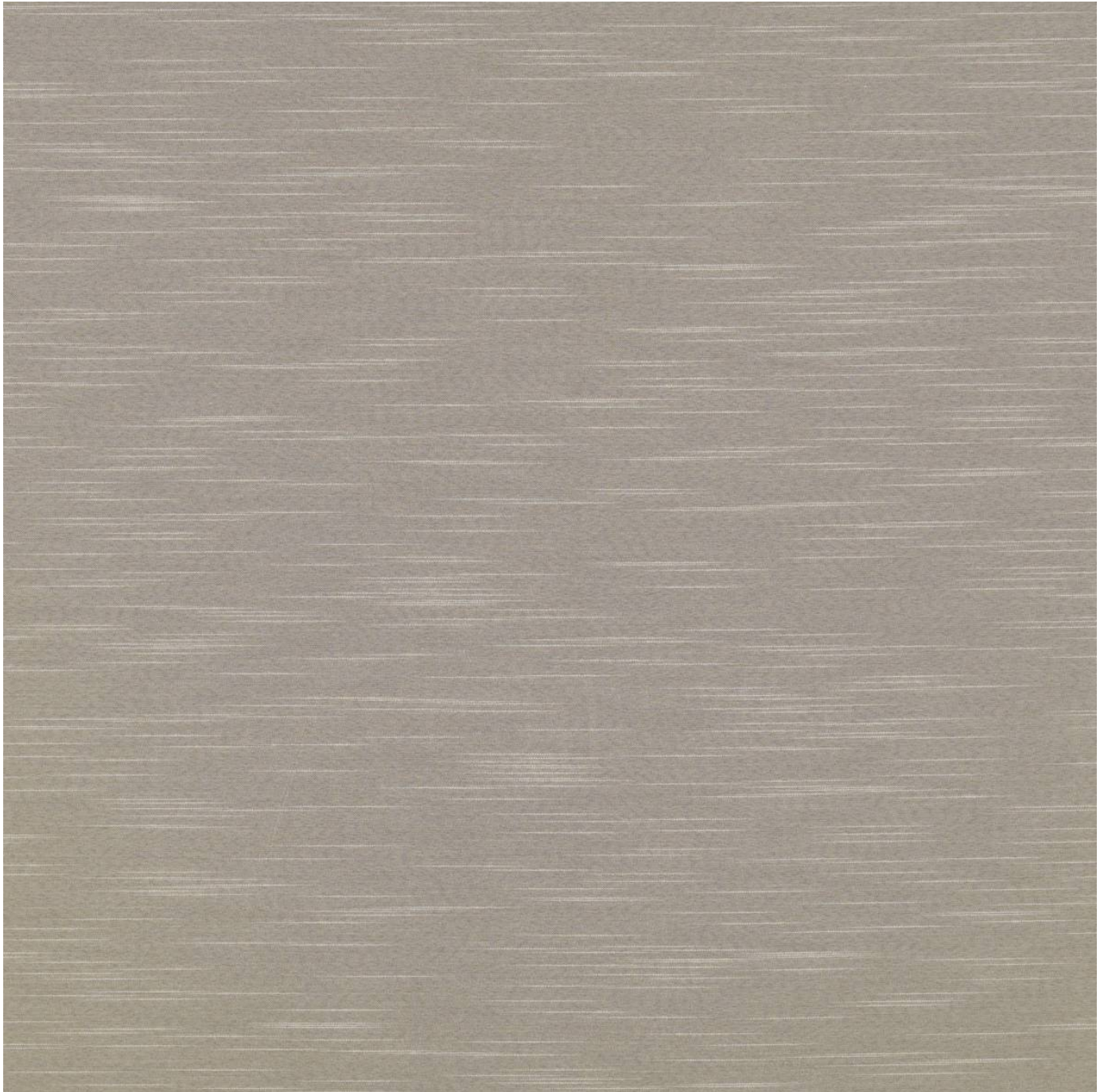


# SIGHT LINE BUSINESS CLASS

**Fabrics** » Woven Fabrics

---



Brand: **CF Stinson**

Applications: **Other**

1300 306 399

[info@baresque.com.au](mailto:info@baresque.com.au)

[baresque.com.au](http://baresque.com.au)

1 of 4

# SIGHT LINE BUSINESS CLASS

Fabrics » Woven Fabrics

Sight Line-Business class is an acoustic high-performance fabric with 167cm wide. Cleanable with damp cloth and mild detergent

✓ **Environmentally Friendly**

✓ **Acoustic**

Description	Mix and match colours and textures from our range of acoustically transparent high-performance textiles and wrap around our Zintra Acoustic Panel to create an interesting space with tranquil ambience and high acoustic performance.
-------------	--

Composition	52% Post Industrial Recycled polyester, 28% Post Consumer Recycled polyester, 20% polyester
-------------	---

Environmental Info	<p>Greenguard Certifications contributes towards LEED credits for low-emitting furniture and ensures compliance with Business and Institutional Furniture Manufacturers Association (BIFMA) X7.1 standard and BIFMA e3 credit 7.6.1.</p> <p>Greenguard Gold Certification standard includes:</p> <ul style="list-style-type: none"><li>* Health-based criteria for additional chemicals and requires lower total VOC emissions levels to help ensure that products are acceptable for use in environments like schools and healthcare facilities.</li><li>* Products that also comply with requirements of the state of California's Department of Public Health (CDPH) "Standard Method for the Test and Evaluation of Volatile Organic Chemical Emissions from Indoor Sources Using Environmental Chambers, Version 1.2 (2017)" (also know as California Section 01350).</li><li>* Products that are compliant with the BIFMA X7.1 standard and BIFMA e3 credits 7.6.1, 7.6.2, and 7.6.3.</li></ul>
--------------------	---

Pattern Repeat Size	N/A
---------------------	-----

Roll Size	167cm-x-approx-55m-available-by-the-lineal-metre
-----------	--

Abrasion	N/A
----------	-----

Lead Time	<ul style="list-style-type: none"><li>• 2-weeks (approx.) from Wednesday, subject to stock availability.</li><li>• Additional 1-week for Western Australia.</li><li>• Express delivery is available subject to a surcharge. Contact Baresque for details and pricing.</li></ul>
-----------	---

# SIGHT LINE BUSINESS CLASS

Fabrics » Woven Fabrics

---

## Care Instructions

Always use a clean, white, soft cloth.

Clean in situ using a damp cloth and mild detergent. Sponge down afterwards with a clean, damp cloth.

Using a cloth to pat dry will help eliminate watermarks.

Ensure the pile is brushed back to its natural direction.

Upholstered furniture should be regularly vacuumed or brushed with a soft nylon brush to remove grit or dust, which may damage the pile.

Never use stiff bristles or wire brushes, as they may damage the fabric.

Always test in an inconspicuous area first. If care instructions don't deliver the expected results, cease cleaning method immediately and contact Baresque for assistance.

---

## Warranty

5-year warranty. Visit [baresque.com.au/warranty](https://baresque.com.au/warranty) for complete details.

---

# SIGHT LINE BUSINESS CLASS

Fabrics » Woven Fabrics

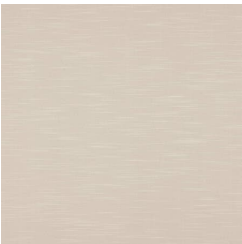
## Colour & Finish Options

### COLOURWAY CARD

COLOURWAY CARD



STL 21 SCAN



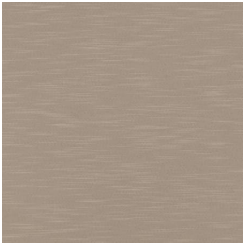
STL 22 PERSPECTIVE



STL 23 CASHMERE



STL 25 HORIZON



STL 26 VISTA



STL 28 VIEW POINT



STL 29 CLEAR VIEW