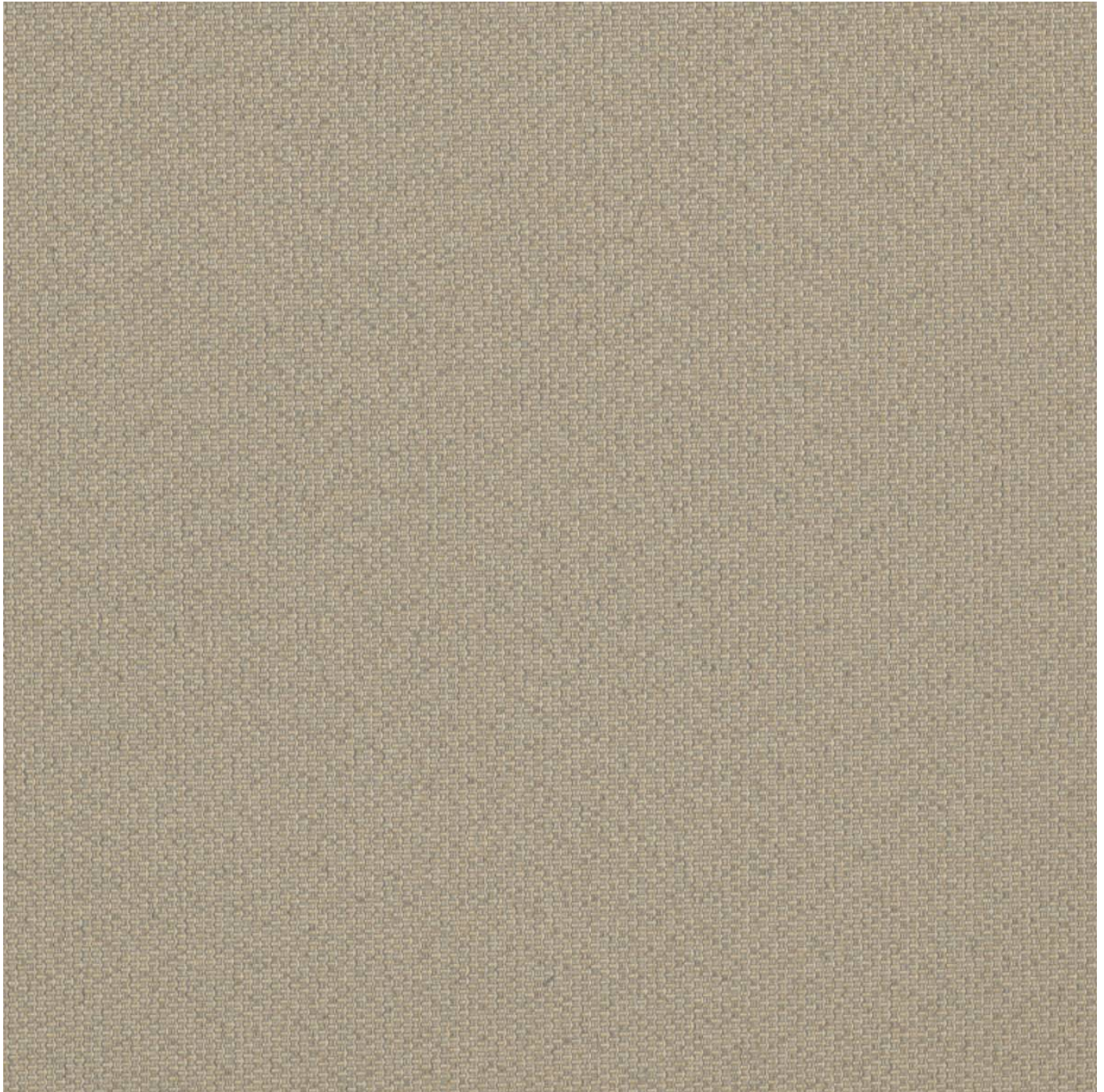


FOCUS BUSINESS CLASS

Fabrics » Woven Fabrics



Brand: **CF Stinson**

Applications: **Other**

1300 306 399

info@baresque.com.au

baresque.com.au

1 of 3

FOCUS BUSINESS CLASS

Fabrics » Woven Fabrics

Focus-Business Class is a 167cm wide acoustic high-performance fabric available in 7 colours. Easily cleanable with water and a white soft cloth

✓ **Environmentally Friendly**

Description	Mix and match colours and textures from our range of acoustically transparent high-performance textiles and wrap around our Zintra Acoustic Panel to create an interesting space with tranquil ambience and high acoustic performance.
-------------	--

Composition	62% Post Industrial Recycled polyester, 38% Post Consumer Recycled polyester
-------------	--

Roll Size	167cm-x-approx-55m-available-by-the-lineal-metre
-----------	--

Lead Time	<ul style="list-style-type: none">• 2-weeks (approx.) from Wednesday, subject to stock availability.• Additional 1-week for Western Australia.• Express delivery is available subject to a surcharge. Contact Baresque for details and pricing.
-----------	---

Care Instructions	<p>Always use a clean, white, soft cloth.</p> <p>Clean in situ using a damp cloth and mild detergent. Sponge down afterwards with a clean, damp cloth.</p> <p>Using a cloth to pat dry will help eliminate watermarks.</p> <p>Ensure the pile is brushed back to its natural direction.</p> <p>Upholstered furniture should be regularly vacuumed or brushed with a soft nylon brush to remove grit or dust, which may damage the pile.</p> <p>Never use stiff bristles or wire brushes, as they may damage the fabric.</p> <p>Always test in an inconspicuous area first. If care instructions don't deliver the expected results, cease cleaning method immediately and contact Baresque for assistance.</p>
-------------------	--

Warranty	5-year warranty. Visit baresque.com.au/warranty for complete details.
----------	--

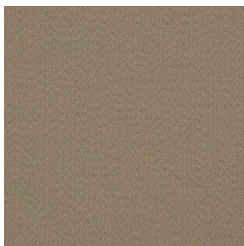
FOCUS BUSINESS CLASS

Fabrics » Woven Fabrics

Colour & Finish Options

COLOURWAY CARD

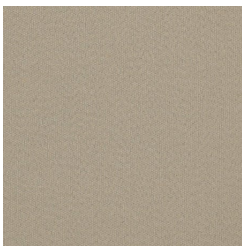
COLOURWAY CARD



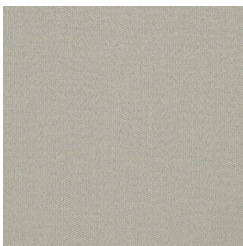
FOCUS FOS 50 SEPIA



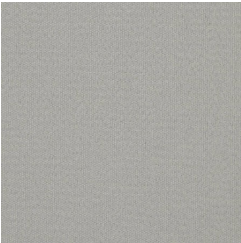
FOS 51 ECRU



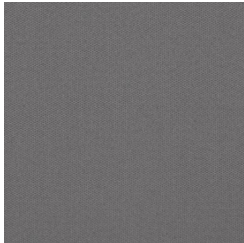
FOS 52 NATURAL



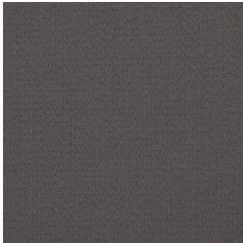
FOS 53 FILTER



FOS 54 OVERCAST



FOS 55 SHADE



FOS 56 CARBON