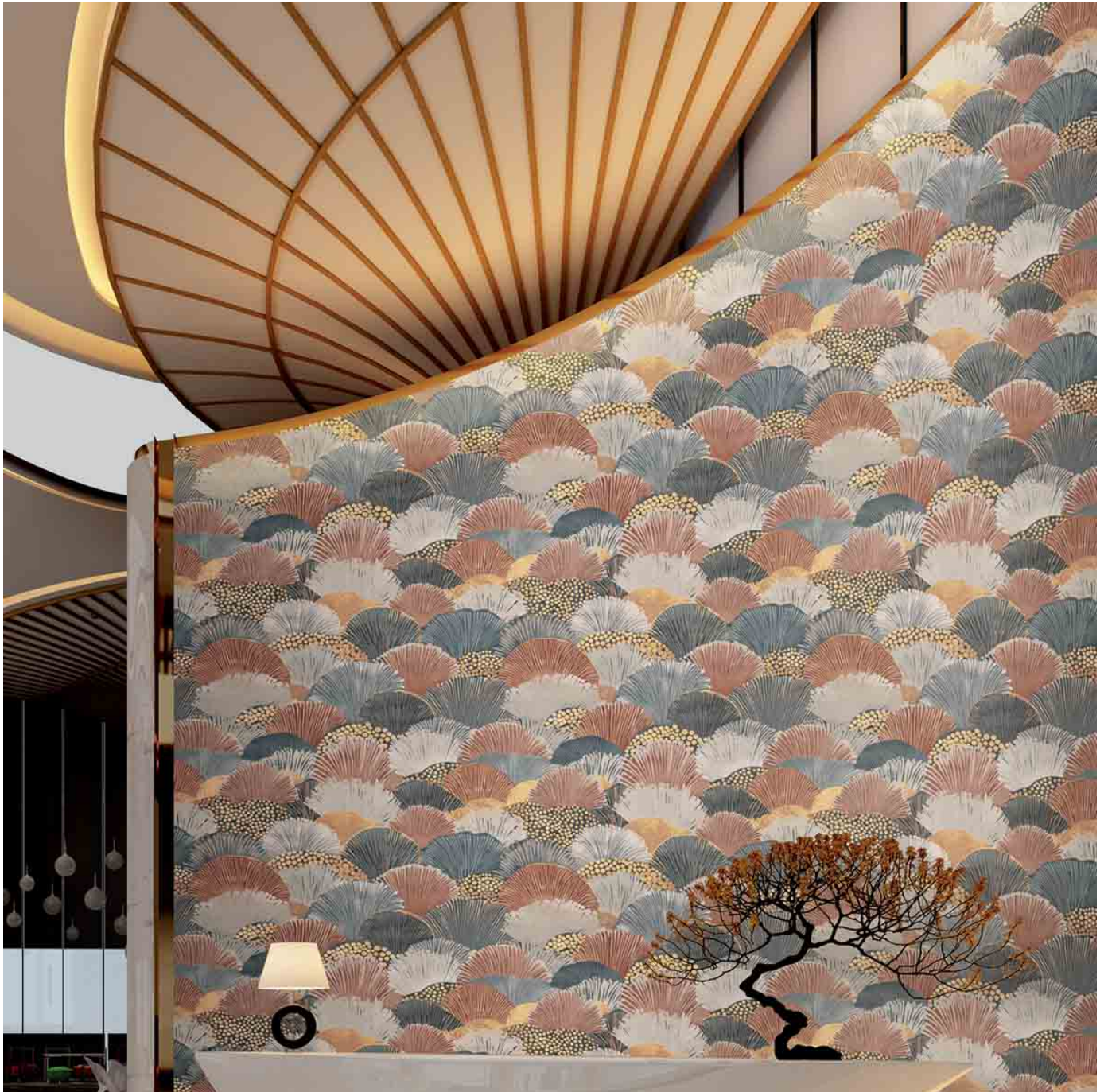


SOLARA

Wallcoverings » Commercial Wallcoverings



Brand: **Versa**

Applications: **Walls**

SOLARA

Wallcoverings » Commercial Wallcoverings

A refined patterned wallcovering featuring layered fan-like forms and a soft, coordinated colour palette. Designed to bring movement and elegance to commercial interiors.

✓ **Low VOC**

✓ **EPD Certified**

✓ **HPD Certified**

Description

Solara introduces a rhythmic, layered pattern inspired by softly fanned forms, creating a sense of movement and visual depth across the wall. Repeating scalloped motifs are balanced through careful scale and spacing, delivering impact while maintaining a composed, architectural presence.

The considered colour palette blends warm and cool tones with subtle contrast, allowing Solara to sit comfortably within both contemporary and classic interior schemes. Designed as a coordinating wallcovering to Weft, the pattern offers flexibility for layered design approaches and cohesive spatial storytelling.

Finished with a durable vinyl surface on a non-woven backing, Solara is designed for commercial environments where performance and longevity are essential. Ideal for feature walls in hospitality, workplace, and curated public interiors, it delivers visual richness with refined restraint.

Composition

98% Vinyl, 2% Metallised Polyester on Non-Woven Backing (452 g/m²)

Pattern Repeat Size

91.4 cm V x 132.1 cm H

Roll Size

132/137cm x 27.4m - Available by the lineal metre.

Weight

452 gr/m²

Fire Rating

Tested in accordance with AS ISO 9705 2003 for the purpose of determining the Group Number classification as required by the Building Code of Australia for the control of fire spread on interior wall and ceiling linings.

The result achieved was:
Classification - Group 2
Specific Extinction - Less than 250m²/kg

Lead Time

- 2-weeks (approx.) from Wednesday, subject to stock availability.
- Additional 1-week for Western Australia.
- Express delivery is available subject to a surcharge. Contact Baresque for details and pricing.

Suggested Installation

Reverse hang, / match and cut

Baresque recommends and supply Roman brand adhesives and primers.

SOLARA

Wallcoverings » Commercial Wallcoverings

Care Instructions

Use a natural sponge or soft cloth with a mild soap or detergent solution diluted in water.

If stronger cleaning is required, use a liquid household cleaner; always test first in an inconspicuous area.

Stubborn deposits can be gently treated with a soft bristle brush.

Rinse thoroughly with clean, clear water and dry with an absorbent cloth.

Do not use caustic, solvent-based, or abrasive cleaners. These can cause discolouration, particularly on metallic finishes.

Never mix cleaning agents.

Repeated use of strong cleaners may reduce the flexibility and performance of vinyl wallcoverings.

If the care instructions do not achieve the desired result, stop cleaning immediately and contact Baresque for further guidance.

Warranty

5-year warranty. Visit [baresque.com.au/warranty](https://www.baresque.com.au/warranty) for complete details.

SOLARA

Wallcoverings » Commercial Wallcoverings

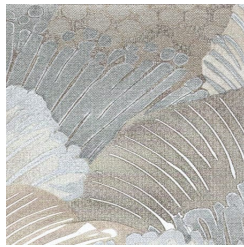
Colour & Finish Options



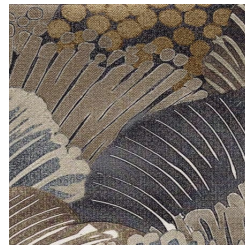
COLOURWAY CARD



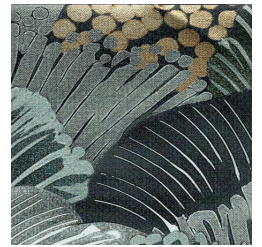
A221-010 – SILVER SPOON



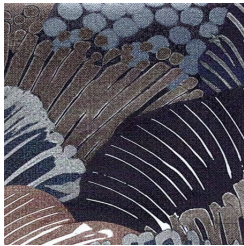
A221-053 – OPULENT



A221-139 – MAGIC HOUR



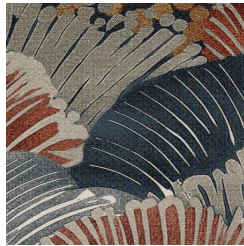
A221-228 – CASCADE



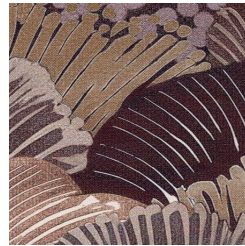
A221-387 – MARIS



A221-414 – BLUSH



A221-524 – RIVERIA



A221-576 – VENTALINA