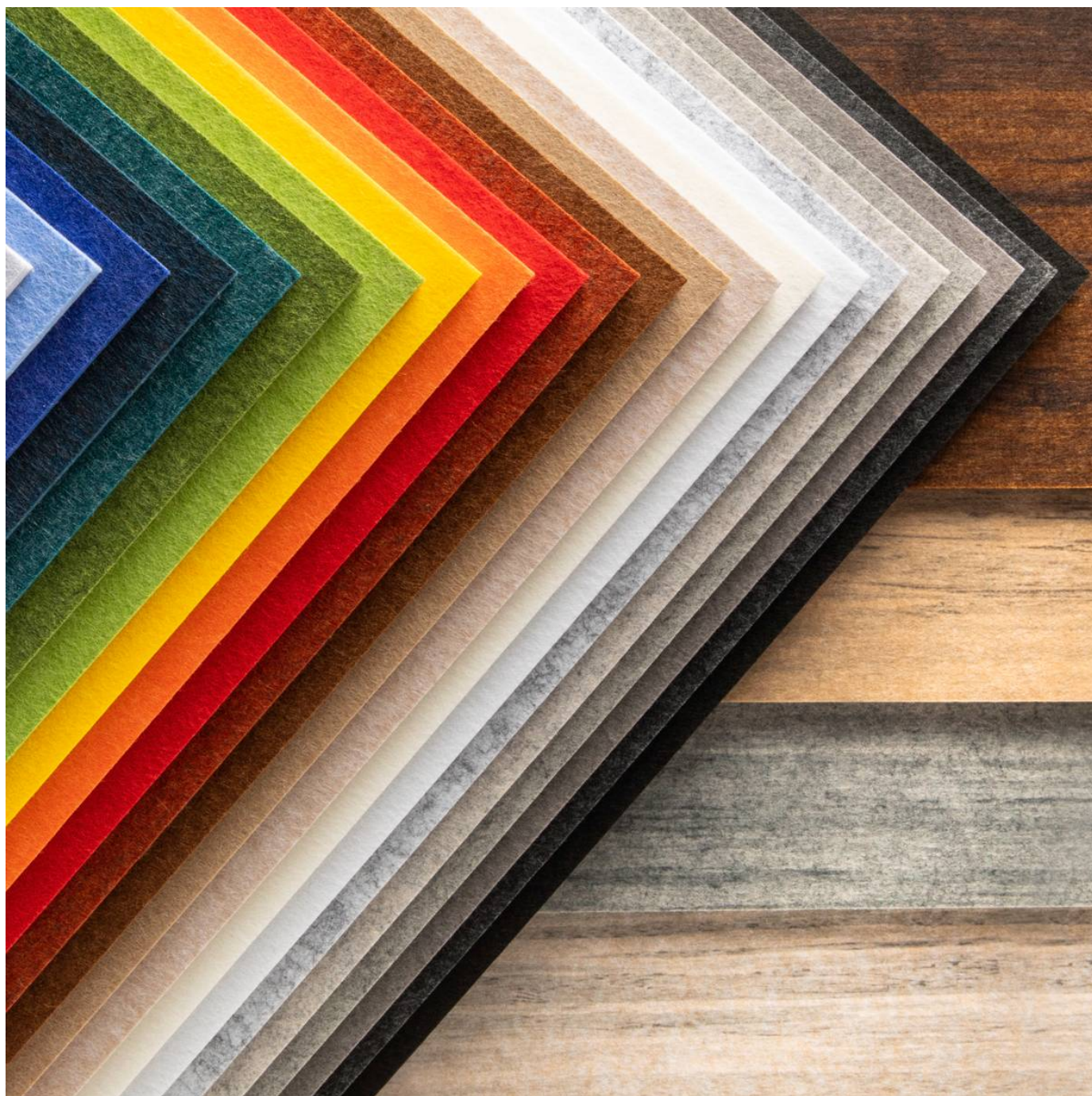


ZINTRA 12MM ACOUSTIC PANEL

Acoustics » Acoustic Panels



Brand: **Zintra**

Applications: **Walls**

1300 306 399

info@baresque.com.au

baresque.com.au

1 of 5

ZINTRA 12MM ACOUSTIC PANEL

Acoustics » Acoustic Panels

Zintra Acoustic Panel is the perfect solution for your application where acoustic performance and aesthetics are required. Available in 30 colours.

- ✓ Absorbs Noise
- ✓ Bleach Cleanable
- ✓ Environmentally Friendly
- ✓ Extended Warranty
- ✓ Solution Dyed Yarns
- ✓ Easy Fabrication
- ✓ Easy Install

Description	<p>Baresque's Zintra Acoustic Panel is the perfect solution for your application where acoustic performance as well as aesthetics are required.</p> <p>Zintra's wide range of colours and ease of use make it the ideal material for commercial, hospitality and institutional projects.</p> <p>Zintra Acoustic Panel features include:</p> <p>Cost effective sound solution</p> <p>NRC = 0.45 for 12mm</p> <p>2800mm long sheets ideal for join-free floor to ceiling applications</p> <p>Broad range of neutral and bright colours</p> <p>Suitable for a multitude of applications - walls, ceilings, screens</p> <p>Easily fabricated and installed</p> <p>Pinnable Find out more about the Benefits of Zintra on the DOWNLOAD tab.</p>
-------------	--

How to Specify	Colour
----------------	--------

Composition	Zintra Acoustic Panel - 100% Solution Dyed (Colour Through) Polyester. 2.4 kg/m ²
-------------	--

Environmental Info	Easily recycled through standard recycling channels
--------------------	---

Finishes	Matt
----------	------

Dimensions	2800mm x 1225mm x 12mm
------------	------------------------

Fire Rating	<p>Tested in accordance with AS ISO 9705 2003 for the purpose of determining the Group Number classification required by the Building Code of Australia for the control of fire spread on interior wall and ceiling linings.</p> <p>Classification - Group 1</p> <p>Specific Extinction - Less than 250m²/kg</p>
-------------	---

ZINTRA 12MM ACOUSTIC PANEL

Acoustics » Acoustic Panels

Lead Time	<ul style="list-style-type: none">• Held in stock in Australia. From receipt of full payment:• Sydney, Melbourne, Brisbane: 3 working days• Adelaide: 4 working days• Perth: 5-working days
Fabrication Techniques	Stanley knife and straight edge
Suggested Installation	<p>Be sure to support the panel during installation to avoid bowing or creasing.</p> <p>Adhere to substrate using contact adhesive, Liquid Nails or Z clips.</p> <p>Panel can also be mechanically fixed using details similar to glass fittings.</p> <p>Download the Handling and Installation guide for full instructions.</p>
Care Instructions	<p>Vacuum to remove dust.</p> <p>Dab Zintra with a damp clean cloth and mild solution of liquid detergent and warm water. Repeat using only clean water, then pat dry with a lint free cloth.</p> <p>For difficult stains, use a solution of household bleach (10% bleach / 90% water). To remove the bleach, repeat using a clean, water dampened cloth, then pat dry.</p> <p>Always test in an inconspicuous area first and if you don't see the expected results, contact us.</p>
Warranty	5-year warranty. Visit baresque.com.au/warranty for complete details.
Customisable	The Zintra Acoustic Solutions range is customisable to your project. Please get in touch with your local contact for details.
Additional Comments	NRC - 0.45 - 0.9 Indoor only. Not suitable as a free standing product.

ZINTRA 12MM ACOUSTIC PANEL

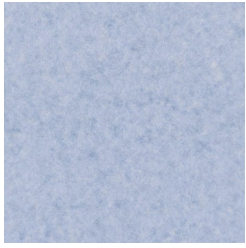
Acoustics » Acoustic Panels

Colour & Finish Options

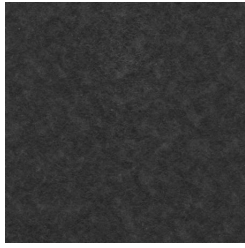
COLOURWAY CARD					
	COLOURWAY CARD	BARK/COCOA	BRICK	CADET	CHAMBRAY/ PERIWINKLE
					
	COBALT/NAVY	ECRU/TAUPE	ELDERBERRY	FOSSIL	FROST/WHITE
					
GRASS/LIME	GREIGE	IVORY/MILKY	LINEN/CREAM	MALACHITE	
					
MANDARIN/ORANGE	MEADOW	MIDNIGHT	OCHRE/BLUSH	OLIVE	
					
PARCHMENT	PEBBLE	PEWTER/GREY	SAFFRON	STORM	

ZINTRA 12MM ACOUSTIC PANEL

Acoustics » Acoustic Panels



SKY/BUE



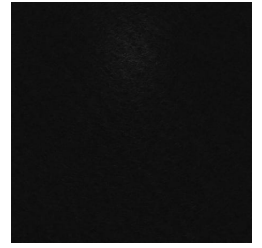
SLATE/ASH



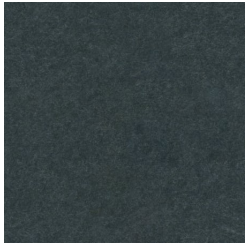
SMOKE/SILVER



SUNSHINE/YELLOW



TAR/BLACK



TWILIGHT