

FLEUR BURCH

Fabrics » Woven Fabrics



Brand: **Burch**

Applications: **Upholstery**

1300 306 399

info@baresque.com.au

baresque.com.au

1 of 5

FLEUR BURCH

Fabrics » Woven Fabrics



FLEUR BURCH

Fabrics » Woven Fabrics

Chic and approachable! Fleur reimagines fleur-de-lis for modern spaces. Neutral tones and Crypton protection offer timeless elegance

✓ **Crypton**

✓ **Greenguard Gold Certified**

✓ **Water Resistant**

✓ **Stain Resistant**

✓ **Bleach Cleanable**

Description	Fleur's sophisticated charm lies in its subtlety, revealing hints of its delicate pattern at every angle. Fleur comes in thirteen beautifully soft-spoken shades.
-------------	---

Composition	CRYPTON - 94% Polyester 6% Post consumer recycled polyester.
-------------	--

Environmental Info	<p>Greenguard Certifications contributes towards LEED credits for low-emitting furniture and ensures compliance with Business and Institutional Furniture Manufacturers Association (BIFMA) X7.1 standard and BIFMA e3 credit 7.6.1.</p> <p>Greenguard Gold Certification standard includes:</p> <p>* Health-based criteria for additional chemicals and requires lower total VOC emissions levels to help ensure that products are acceptable for use in environments like schools and healthcare facilities.</p> <p>* Products that also comply with requirements of the state of California's Department of Public Health (CDPH) "Standard Method for the Test and Evaluation of Volatile Organic Chemical Emissions from Indoor Sources Using Environmental Chambers, Version 1.2 (2017)" (also known as California Section 01350).</p> <p>* Products that are compliant with the BIFMA X7.1 standard and BIFMA e3 credits 7.6.1, 7.6.2, and 7.6.3.</p>
--------------------	---

Pattern Repeat Size	75cm V / 72.3cm H
---------------------	-------------------

Roll Size	137cm wide X 55m - Available by the lineal metre
-----------	--

Weight	875 g/m ²
--------	----------------------

Abrasion	63,000 double rubs (Wyzenbeek)
----------	--------------------------------

Lead Time	<ul style="list-style-type: none">• 2-weeks (approx.) from Wednesday, subject to stock availability.• Additional 1-week for Western Australia.• Express delivery is available subject to a surcharge. Contact Baresque for details and pricing.
-----------	---

FLEUR BURCH

Fabrics » Woven Fabrics

Care Instructions

Always use a clean, white, soft cloth.

Prepare a mixture of 1/3 Napisan and 2/3 Fab. Combine the mixture with water to make a paste about the consistency of soft margarine i.e. not too runny. Apply using a soft bristle brush. Leave for 10 minutes.

Use a brush and clean, warm water to remove the paste being sure to renew the water so that it remains clean.

Never use stiff bristles or wire brushes, as they may damage the fabric. To prevent soil build-up, frequent vacuuming is recommended.

Using a cloth to pat dry will help eliminate watermarks.

For more difficult stains, dampen a soft white cloth with a solution of household bleach (10% bleach / 90% water). Rub gently. Rinse with a water dampened cloth to remove bleach concentration.

Always test in an inconspicuous area first. If care instructions don't deliver the expected results, cease cleaning method immediately and contact Baresque for assistance.

Warranty

2-year warranty. Visit baresque.com.au/warranty for complete details.

FLEUR BURCH

Fabrics » Woven Fabrics

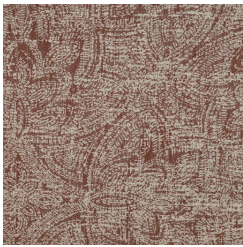
Colour & Finish Options



COLOURWAY CARD



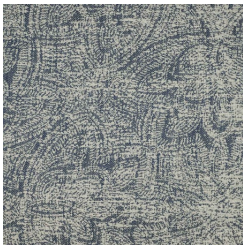
1012127 CORAL



1012128 GARNET



1012129 RASBERRY



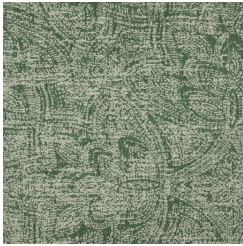
1012130 IMPERIAL



1012131 CYAN



1012132 SPEARMINT



1012133 PINE



1012134 OLIVE



1012135 GILDED



1012136 STERLING



1012137 KOALA



1012138 CASHEW



1012139 FROST