

FOLIA

Fabrics » Woven Fabrics



Brand: **Panaz**

1300 306 399

info@baresque.com.au

baresque.com.au

1 of 4

FOLIA

Fabrics » Woven Fabrics

COLOURWAY CARD

COLOURWAY CARD



133 SAPHIRE



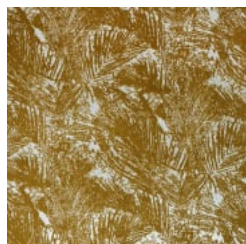
193 PETROL



215 ELM



292 RACING GREEN



300 GOLD



315 ANTIQUE GOLD



408 TERRACOTTA



858 COBBLE



904 PEWTER



949 NOIR



971 NICKEL

FOLIA

Fabrics » Woven Fabrics



Escape to paradise! Folia's lush palm leaves and new metallic hues bring tropical vibes to your interior. Mix and match for endless style.

Description	The luxurious foliage pattern of Folia reminds us of tropical palm leaves dappled in sunlight, the six new colours sit beautifully together with the three additional complimentary colours of Enchant in metallic greys, deep blue, leafy green and burnished gold.
Roll Size	138cm x N/A - Available by the lineal metre. MINIMUM ORDER 5 METRES
Weight	750 g/m ²
Composition	Polyester / Cotton blend with FR coating
Abrasion	100,000 (Martindale Rubs)
Pattern Repeat Size	71 cm V / 52 cm H
Warranty	2-year warranty. Visit baresque.com.au/warranty for complete details.

Lead Time

- 2-weeks (approx.) from Wednesday, subject to stock availability.
 - Additional 1-week for Western Australia.
 - Express delivery is available subject to a surcharge. Contact Baresque for details and pricing.
-

Care Instructions

- * Vacuum and wipe clean routinely with a microfibre cloth lightly dampened with cold water only.
 - * Soak up spillages as soon as possible with an absorbent dry cloth to prevent staining.
 - * If soiling has accumulated use a mild proprietary cleaner (non-alkaline). Take care to remove all soap residues and dry with a clean absorbent cloth. Then brush pile back to its natural direction.
 - * Do not steam clean - heat seals its stains
 - * Do not use bleach
 - * Do not tumble dry
 - * Do not dry clean
 - * Do not fully immerse in water
 - * Do not apply solvents, alcohol, or any other chemical cleaners
-