

MAZE CONCERTEX

Fabrics » Woven Fabrics



Brand: **Concertex**

MAZE CONCERTEX

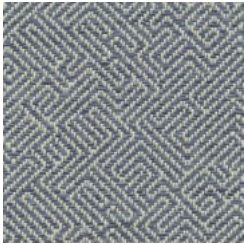
Fabrics » Woven Fabrics

COLOURWAY CARD

COLOURWAY CARD



AMAZON



ATLANTIS



CORN



LAPIS



ROSE



SLATE



STONE



WHEAT

MAZE CONCERTEX

Fabrics » Woven Fabrics



Lose yourself in Maze's whimsical woven texture and vibrant colours! This durable, water-resistant fabric is perfect for any adventure.

- Bleach Cleanable
 - PVC-Free
- Graffiti-Free
 - Phthalate Free
- HPD Certified

Description	<p>Get lost and find wonder in the nostalgic nature of Maze. Maze is a fused woven textile with Tekloom® technology designed to take you on an adventure.</p> <p>No matter where you place Maze, this outstanding performance fabric with an impermeable surface and one million double rubs will not only last but will also pop with seven fun colours that will brighten up any interiors.</p>
Roll Size	137cm x 45.7m - Available by the lineal metre
Composition	<p>88% Polyester, 12% Tekloom TPE (Graffiti-Free)</p> <p>Backing: Acylic</p>
Abrasion	1,000,000+ Double Rubs (Wyzenbeek)
Pattern Repeat Size	10.8 cm V / 18.4 cm H

MAZE CONCERTEX

Fabrics » Woven Fabrics

Environmental Info	<div>PVC/Phthalates free</div> <div>No added fire retardant</div> <div>Healthier Hospitals compliant</div>
Fire Rating	<div>Tested in accordance with AS1530.3</div> <div>Spread of Flame Index - 0</div> <div>Smoke Developed Index - 4</div>
Warranty	2-year warranty. Visit baresque.com.au/warranty for complete details.
Lead Time	<div>• 2-weeks (approx.) from Wednesday, subject to stock availability.</div> <div>• Additional 1-week for Western Australia.</div> <div>• Express delivery is available subject to a surcharge. Contact Baresque for details and pricing.</div>
Care Instructions	<div>While Tekloom® is inherently stain resistant, it is important to keep it clean at all times to maintain the original look and feel. Spot cleaning with a clean, soft towel with clean water will remove most of the everyday stains.</div> <div>Cleaning Code: W/S, Bleach (10:1), Dry Care™</div> <div>DISINFECTION</div> <div>Tekloom can be disinfected with a 10:1 bleach dilution of water/bleach.</div> <div>Apply the solution using a misting spray bottle and gently scrub the affected area with a sponge or soft bristle brush. Allow the mixture to linger for the time specified by the facility.</div> <div>Avoid soaking the seamed area to prevent the bleach from penetrating thru the protective layer.</div> <div>Rinse all cleaning agents thoroughly with water and wipe with a soft cloth</div> <div>Residue left by cleaning agents will degrade and shorten the life and/or affect the product's appearance if not removed.</div> <div>Always test in an inconspicuous area first.</div>