

ELOWEN

Wallcoverings » Commercial Wallcoverings



Brand: **Versa**

1300 306 399

info@baresque.com.au

baresque.com.au

1 of 4

ELOWEN

Wallcoverings » Commercial Wallcoverings

COLOURWAY CARD

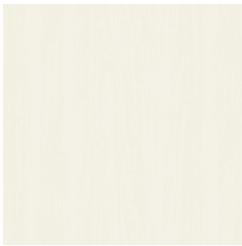
COLOURWAY CARD



A212-015 WHITMORE



A212-037 POPLAR



A212-046 SUN
BLEACHED



A212-122 SUGAR PINE



A212-190 STRAW



A212-441 CEDAR



A212-609 HONEY



A212-624 KINDLING



A212-658 BARK



A212-667 UMBER



A212-673 TEAK



A212-695 MERBAU



A212-802 SYCAMORE



A212-831 WINTER
BRANCH



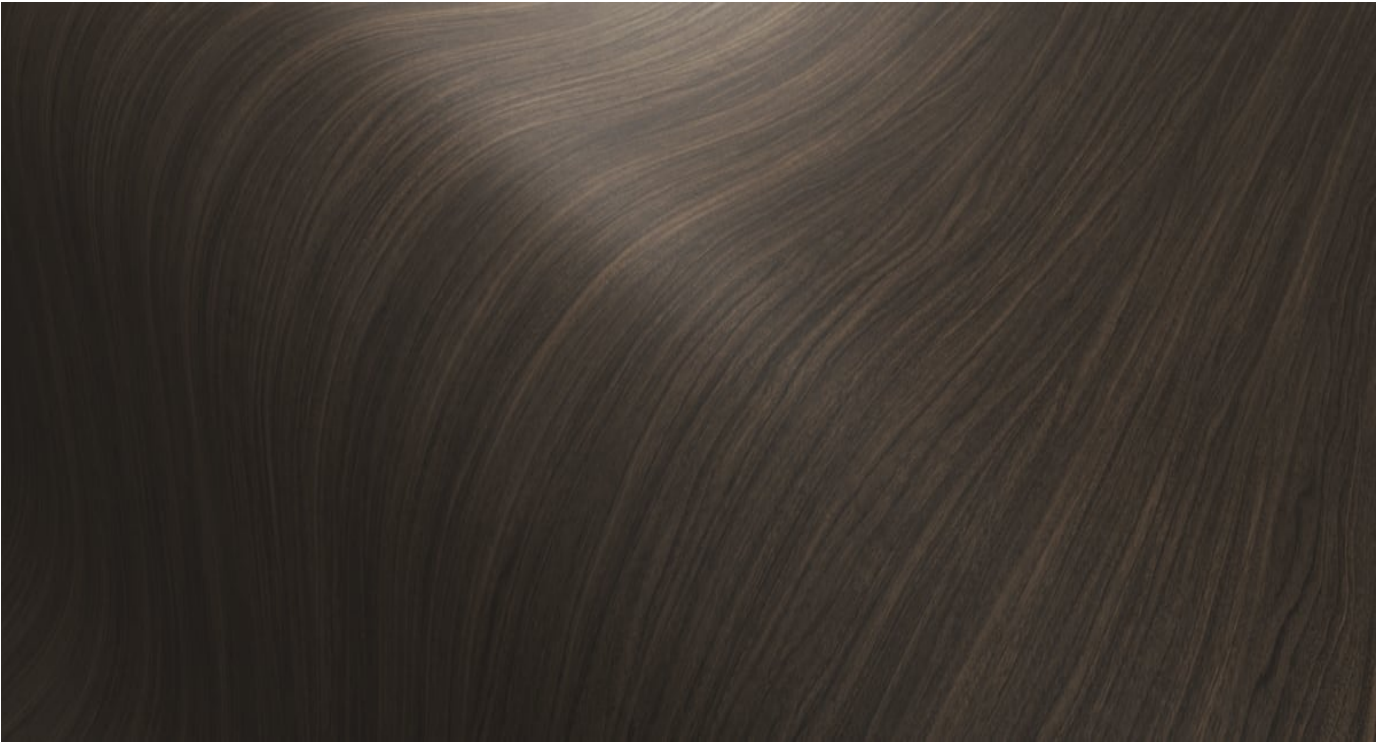
A212-874 WILLOW



A212-880 CHARCOAL

ELOWEN

Wallcoverings » Commercial Wallcoverings



Elowen is a commercial wallcovering with a wood design that's available in 16 colourways. It's low VOC and it's EPD and HPD certified.

- Bleach Cleanable
 - HPD Certified
- Low VOC
- EPD Certified

Description	<p>Elowen is a modern wood design rendered with a consistent grain and fresh, streamlined look. A soft blending of colour and a smooth suede finish contributes to this organic, authentic effect.</p> <p>An extensive palette of 16 colourways ranges from bright white to deep earth tones.</p>
Roll Size	132/137cm x 27.4m - Available by the lineal metre.
Weight	452 (g/m²)
Composition	Vinyl face on a woven backing 20oz (452 g/m²)
Pattern Repeat Size	Not Applicable

Fire Rating	<p>Tested in accordance with AS ISO 9705 2003 for the purpose of determining the Group Number classification as required by the Building Code of Australia for the control of fire spread on interior wall and ceiling linings.</p> <p>The result achieved was: Classification - Group 2 Specific Extinction - Less than 250m²/kg</p>
Warranty	<p>5-year warranty. Visit baresque.com.au/warranty for complete details.</p>
Lead Time	<ul style="list-style-type: none">• 2-weeks (approx.) from Wednesday, subject to stock availability.• Additional 1-week for Western Australia.• Express delivery is available subject to a surcharge. Contact Baresque for details and pricing.
Suggested Installation	<p>Reverse hang / overlap and double cut.</p> <p>Baresque recommends and supply Roman brand adhesives and primers.</p>
Care Instructions	<p>Always use a clean, white, soft cloth.</p> <p>Use cloth with any of the following in preferred order of us:</p> <ol style="list-style-type: none">1: Clear warm water2: Mild solution of liquid detergent and warm water3: Isopropyl Alcohol (a.k.a. rubbing alcohol) <p>Remove any detergent with a clean, damp cloth. Gently pat dry.</p> <p>For more difficult stains, dampen a soft white cloth with a solution of household bleach (10% bleach / 90% water). Rub gently.</p> <p>Rinse with a water dampened cloth to remove bleach concentration.</p> <p>DO NOT USE solvent based or concentrated abrasive cleaning agents, lacquer thinners, nail polish remover as these may cause discolouration over a period of time.</p> <p>Always test in an inconspicuous area first. If care instructions don't deliver the expected results, cease cleaning method immediately and contact Baresque for assistance.</p>