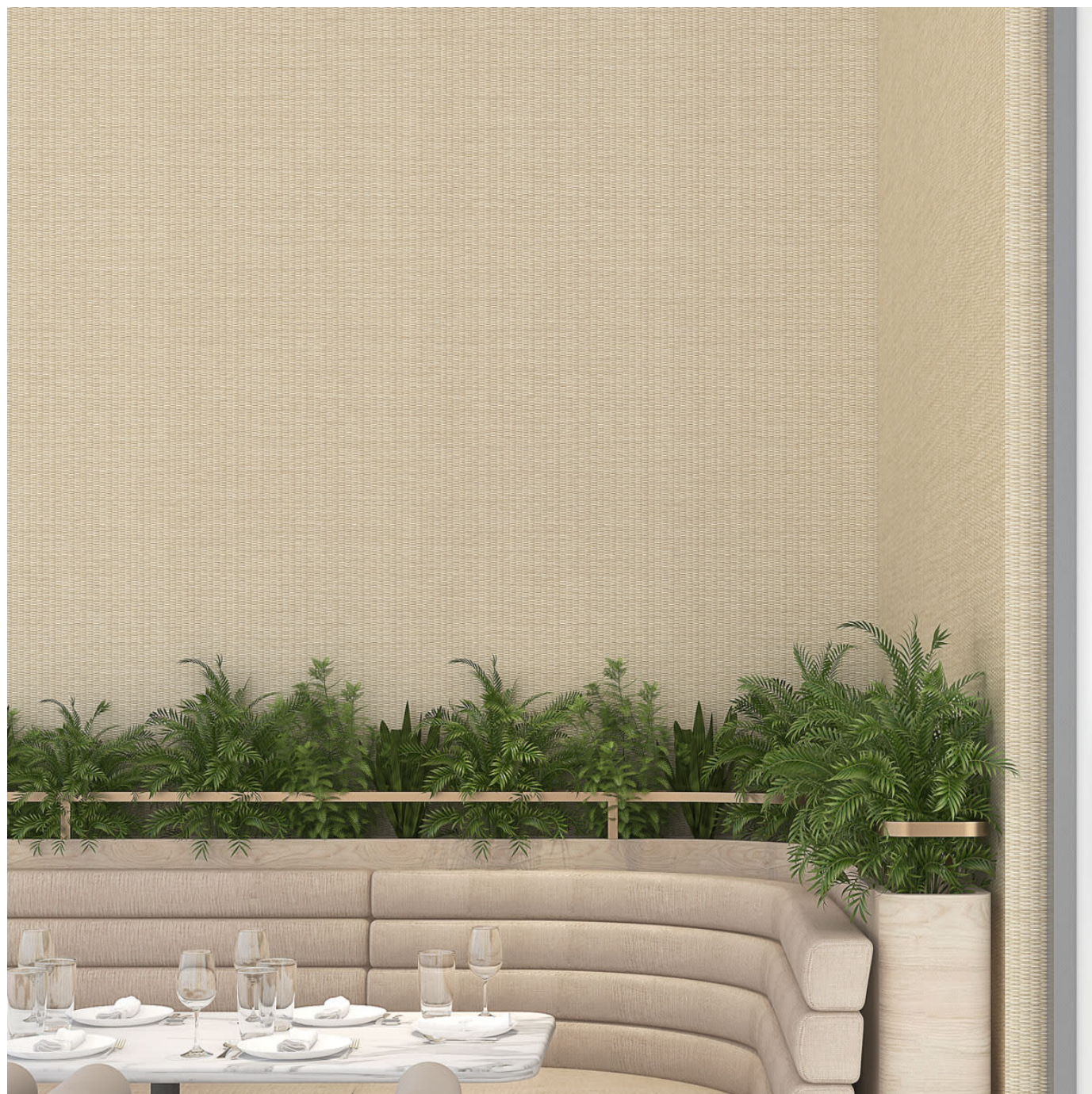


WICKER PARK

Wallcoverings » Commercial Wallcoverings



Brand: **Genon**

WICKER PARK

Wallcoverings » Commercial Wallcoverings

COLOURWAY CARD

COLOURWAY CARD



W2-WP-01 WHEAT
FIELD



W2-WP-02 SAND



W2-WP-03 STRAW



W2-WP-04 CANYON
VIEW



W2-WP-05 WATER
REED



W2-WP-06 COTTON
BREEZE



W2-WP-07 TAUPE



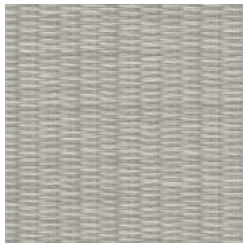
W2-WP-08 HICKORY



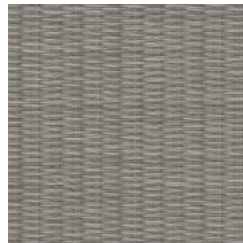
W2-WP-09 RAW
UMBER



W2-WP-10 SILVER
GRASS



W2-WP-11 MORNING
FOG



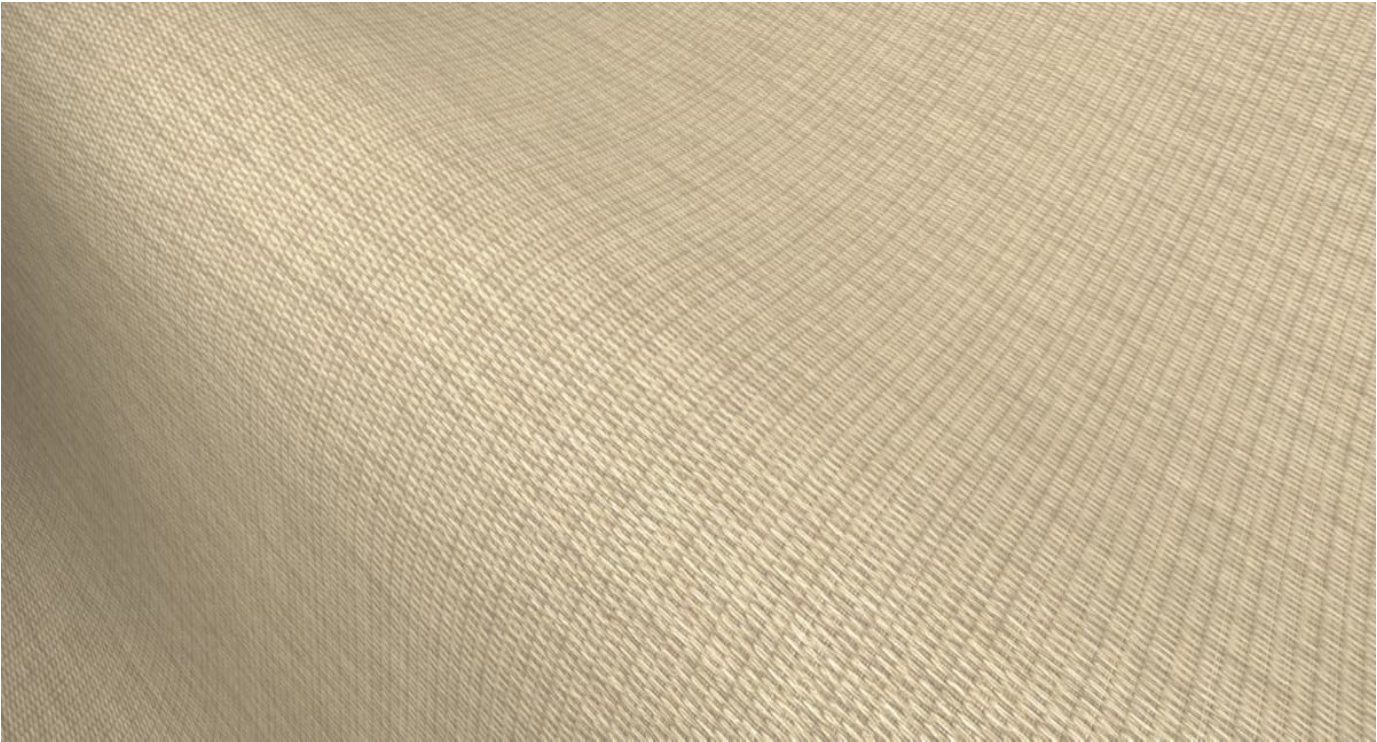
W2-WP-12 SLATE
GREY



W2-WP-13-BLACK
ONYX

WICKER PARK

Wallcoverings » Commercial Wallcoverings



Wicker Park is a Type II wallcovering with a classic design inspired by warm elements. Available in 13 colourways.

- Low VOC
- Bleach Cleanable
- Anti-Microbial

Description	Wicker itself is a staple in the design world, with a centuries-old history. Wicker Park weaves together serious texture, warm natural elements, and classic design. A palette honed to shades that embody the relaxed, organic personality inherent in this material. Whether you're looking for a hint of California cool, New England charm, Southern hospitality, or a wallcovering that warmly envelops the space, Wicker Park brings the vibes.
-------------	---

Roll Size	137cm wide x 27.4m - Available by the lineal metre
-----------	--

Composition	Type II Wallcovering Osnaburg Backing
-------------	--

WICKER PARK

Wallcoverings » Commercial Wallcoverings

Sustainability

- Low VOC
- 10% Recycled content
- Non-Phthalate
- EPD / HPD

It is the policy of J. Josephson, Inc. to ensure that the activities, products, and services carried out here will be appropriate toward meet-and-exceed compliance with relevant environmental legislation and regulations and other requirements to which it subscribes.

We recognize the interrelationship of productive efficiency with environmental impact. Therefore, while our commitment to the customer is still a top priority, we will also work toward continuous improvement and pollution prevention. To achieve this, we will also set and review environmental objectives and targets within the framework of a documented, implemented and effectively communicated program.

Fire Rating

Tested in accordance with AS ISO 9705 2003 for the purpose of determining the Group Number classification as required by the Building Code of Australia for the control of fire spread on interior wall and ceiling linings.

The result achieved was:
Classification - Group 2
Specific Extinction - Less than 250m²/kg

Warranty

5-year warranty. Visit baresque.com.au/warranty for complete details.

Lead Time

- 2-weeks (approx.) from Wednesday, subject to stock availability.
 - Additional 1-week for Western Australia.
 - Express delivery is available subject to a surcharge. Contact Baresque for details and pricing.
-

Suggested Installation

Reverse hang / overlap and double cut.
Baresque recommends and supply Roman brand adhesives and primers.

WICKER PARK

Wallcoverings » Commercial Wallcoverings

Care Instructions

Always use a clean, white, soft cloth.

Use cloth with any of the following in preferred order of us:

1: Clear warm water

2: Mild solution of liquid detergent and warm water

3: Isopropyl Alcohol (a.k.a. rubbing alcohol)

4: Do not use solvent based cleaning agents, lacquer thinners, nail polish remover, pine oil or cleaning agents containing bleach, which may cause discoloration over a period of time.

5: It is recommended that cleaning be done with a natural sponge. A cloth or towel should only be used to tamp dry (not rub). Do not use manmade (i.e. polyester) sponges.
