

# VALET

Fabrics » Woven Fabrics

---



Brand: **Crypton**

1300 306 399

[info@baresque.com.au](mailto:info@baresque.com.au)

[baresque.com.au](http://baresque.com.au)

1 of 4



# VALET

Fabrics » Woven Fabrics



COLOURWAY CARD



1008983 UMBER



1008984 PHANTOM



1008985 ARGYLE



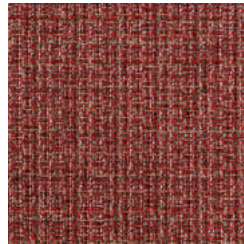
1008986  
BROWNBERRY



1008987 CURRY



1008988 EMBER



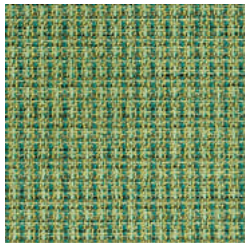
1008989 BERRY  
PATCH



1008990 ADMIRAL



1008991 AQUA



1008992 PALMETTO



1008993 THYME



1008994 SANDPIPER



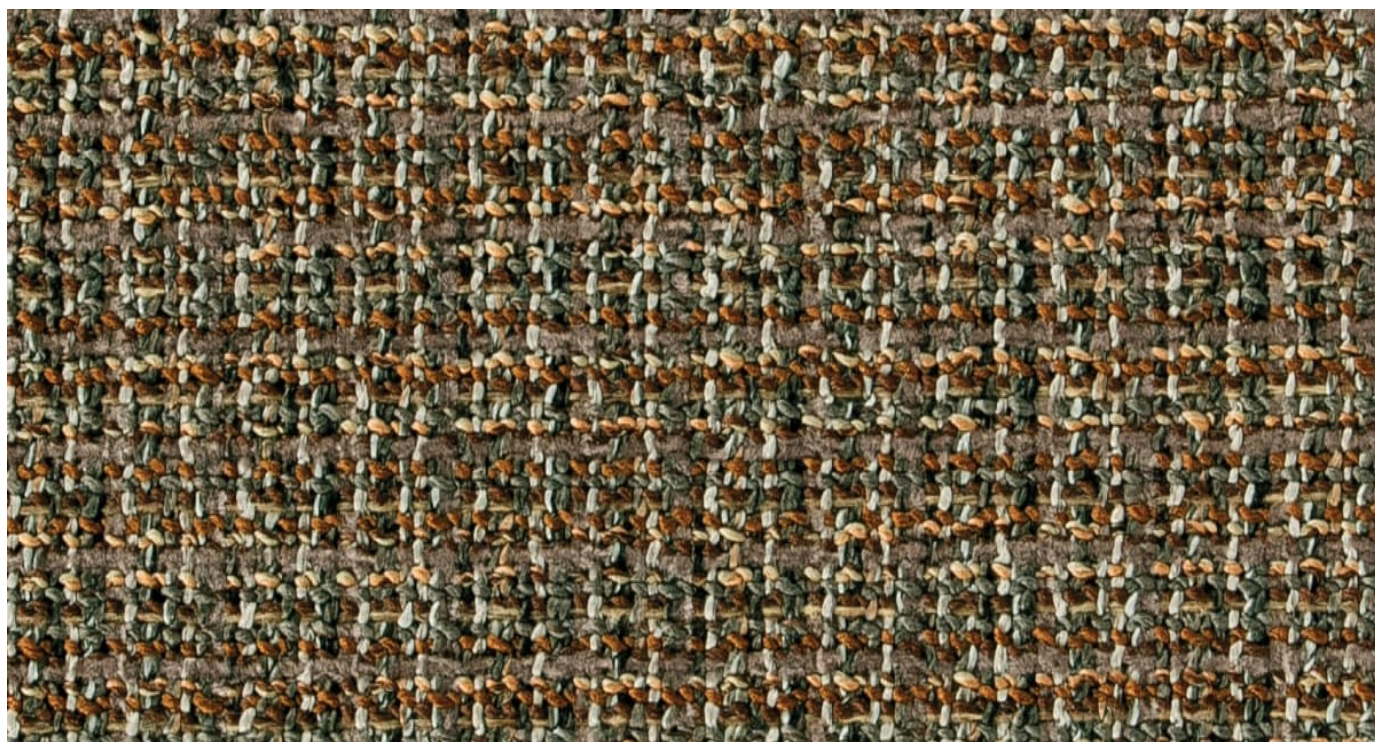
1008995 BUTTER  
PECAN



1008996 LAVENDER

# VALET

Fabrics » Woven Fabrics



Valet is a 137cm wide woven upholstery that combines texture and colour. Suitable for indoor only. Available in 14 colourways.

|                     |  |
|---------------------|--|
| Description         | With no shortage of texture and color, Valet is a tailored tweed that feels fresher than ever. CRYPTON is a permanent moisture, soil resistance and anti-microbial protection backing. |
| Roll Size           | 137cm x Approx 45m - 55m - Available by the lineal metre   |
| Composition         | CRYPTON - 57% polyester, 43% acrylic   |
| Abrasion            | 50,000 double rubs (Wyzenbeek)   |
| Pattern Repeat Size | N/A  |
| Fire Rating         | This product can be treated with a fire retardant that will ensure it meets Australian Standard 1530.3. Contact Baresque for details.  |
| Warranty            | 2-year warranty. Visit <a href="https://baresque.com.au/warranty">baresque.com.au/warranty</a> for complete details.   |



# VALET

Fabrics » Woven Fabrics

---

## Lead Time

- 2-weeks (approx.) from Wednesday, subject to stock availability.
  - Additional 1-week for Western Australia.
  - Express delivery is available subject to a surcharge. Contact Baresque for details and pricing.
- 

## Care Instructions

Mix 5 parts water with 1 part of an enzyme laundry detergent to have a mixture that works well on all stains.

Most liquid spills simply blot off the surface with a dry towel. If a stain remains, follow these simple steps:

1. Remove excess soil, and apply the soap mixture on the stained area
2. Allow solution to remain on stain for 1 minute
3. Blot up the stain with a dry, clean towel, rinse any remaining soap and blot the area again

Repeat these steps if a spot still remains. If agitation is necessary, spray the stained area and work the stain using a soft brush or edge of spoon from outside of spot toward the middle. Blot and rinse to remove any soap.

---